


# HOT WAX



Vol. 33 No. 8

The Official Publication of Black Ski Inc.

August 2005

## BLACK SKI'S SKI SHOW AUGUST 23, 2005

**Refreshments**

**Raffle**

**Ski Swap**

**Free Ski Trip**

**Door Prizes**

**Talk to all the Trip Directors**

**Learn more about each trip and location**

**Take your time and visit each table without distraction**

**See the latest ski equipment**

**You must be present to win raffles and additional chances  
for each trip deposit made during the event**

**Russ Bacon (301) 218-2990**

**Sandra Lawson (202) 635-2815**

### General Body Meetings

August 23rd and September 27th @ 7pm  
19th Street Baptist Church,  
4606 16th Street, N.W., Wash., D.C.  
See you there!

**Contact** Drexel Agee, VP Membership  
301.735.4411

**General Body Meetings are held the fourth  
Tuesday of each month**

### What's Inside:

Team BSI Cycling Schedule	5
Black Ski Inc. Trip Calendar	7
Black Ski Inc. Trip Information	8-11



WASHINGTON D.C.



Black Ski, Inc. and  
Omicron Lambda Alpha Chapter  
of Alpha Phi Alpha, Inc.

Presents

# The 2005 White Affair

A Social Event for the Mature & Sexy Crowd

Date: FRIDAY, August 19, 2005  
Time: 8PM-12AM

Donation: \$35 (advanced tickets)  
\$45 (door tickets)

PLACE: Patuxent Greens Country Club  
14415 Greenview Drive  
Laurel, MD 20708

....Water Front Party Area....

....Door prizes....5 minute dating....

....DJ spinning a mix of Old and New School Hits....  
cash bar....lots more!!!!

\*White attire is optional. Dress to impress

\*Proceeds to benefit the Black Ski Youth Foundation, Inc.

To Purchase tickets in advance contact

Angie Walker 301-706-5246

or

Tyrone Hughes 301-324-1906

or

Visit [http://ola1906.org/events/black\\_ski/white\\_affair2005.html](http://ola1906.org/events/black_ski/white_affair2005.html)

You and your guests are invited to Join  
Grandmaster Furman Marshall & The Black Belts of

**SIMBA DOJANG, Inc.**

At Our 40 Year Anniversary Celebration Banquet

SATURDAY EVENING, SEPTEMBER 10, 2005

7:00 p.m. until 12 Midnight

at

**THE BEST WESTERN POTOMAC VIEW HOTEL**

6400 Oxon Hill Road • Oxon Hill, Maryland 20745

Buffet Dinner Served at 8:00 pm

**Roast of Grand Master and Black Ski Founder**

Furman Marshall at 9:00 p.m.

***Black Tie Optional for Men***

***Elegant Dress for Ladies***

***\$70.00 Per Person***

Advance Ticket Sales Only! No Tickets Sold at the Door

**For Tickets and more information, contact:**

*Grandmaster Furman Marshall (202) 882-1310*

*Isabel Brown (301) 368-4208*

*Master James Wyatt (301) 248-3311*

*or Email us at [SimbaAnniversary@wtkdc.com](mailto:SimbaAnniversary@wtkdc.com)*

Tri-State Connection Presents  
**A Swing and Line Dance Explosion**  
**September 9 – 10, 2005**

at the  
Marriott Hotel BWI Airport  
1743 W. Nursery Road • Baltimore, Maryland

*Tri-State Connections proudly presents a weekend of competition, workshops, fellowship and dancing featuring forms of swing and line dance styles from all over the United States!*

**Over \$20,000 in cash & prizes!**

**2 Ballrooms - over 6,000 square feet of dance space.**

**Over 10 Fabulous Workshops with  
Top Dance Instructors from across the U.S.**

**Weekend Pass - \$65 in Advance, \$70 at door.  
Pre-Registration Preferred.**

**Hotel – Register under Tri-State Connection before  
August 1, 2005 for discounted hotel rate of \$109  
Vendors selling a variety of products such as dance shoes,  
jewelry, personal care items, etc.**

**Visit [www.Tristateconnection.net](http://www.Tristateconnection.net) for more information or contact:**

**Lawrence Bradford**  
**(202) 722-4610**  
**[l.bradford3@verizon.net](mailto:l.bradford3@verizon.net)**

**Vanessa Quinn**  
**(301) 297-7066**

**JoJo Nelson**  
**(301) 925-4160**  
**[BenBen7292@aol.com](mailto:BenBen7292@aol.com)**

**Al Johnson**  
**(410) 578-9739**

**Cheryl Redding-Parris**  
**(410) 908-2278**  
**[lexladi@aol.com](mailto:lexladi@aol.com)**

**Christine Satterwhite**  
**(410) 358-7042**

**Kermit Banks**  
**(301) 474-3639**  
**[Kermit.Banks@ferc.gov](mailto:Kermit.Banks@ferc.gov)**

**Novella Campbell**  
**(301) 316-0259**  
**[Sezdance@aol.com](mailto:Sezdance@aol.com)**

**Tippi Mavritte**  
**(301) 559-3364**  
**[tippi627@upson.cc](mailto:tippi627@upson.cc)**



## Team BSI 2005 Cycling Schedule

### A u g u s t

- 6 **C&O Canal Meet (C/D)** 7:30am, Ride 8 am  
Meet Location TBA - Hybrid Bikes Recommended  
Eileen Jenkins 202-549-1475 (cell)
- 13 **Tilghman's Island (St. Michael's)** 7am A/B Riders 70 mi 8am C/D Riders 20+ mi RT, Jack Gardner 301-627-5128, JGardner2@aol.com, Kathy Lambert 301-603-0971, KLambert14@yahoo.com
- 20 **North Central Railroad Trail**, Lake Artemesia 8 am  
Sharon Laws 202-256-8275 (cell), Rollen Bard - Details TBA
- 28 **Reston Bike Club Century** Reston Town Center (VA) 100-mi, 62-mi, 31-mi Reg: \$25-30 <http://restonbikeclub.org> - <http://www.active.com> Post tour festival - food, music D rider cycles 10-15 miles at a pace of up to 10 mi/hr

### S e p t e m b e r

- 3 **Washington & Old Dominion (W&OD) Trail** (All Levels)  
0-60+ Miles, Meet in Shirlington, VA @ Thomasine Howerton 202-575-1834 (Hm)
- 4 **Bay County Century** Owings, MD 25, 50, 62, 100 miles  
Flat to Rolling Hills \$25 (Includes post ride buffet.)  
[www.teamsnowvalley.com](http://www.teamsnowvalley.com)
- 11 **Southern MD Fall Century** Oxon Hill Bike Club, \$15 Reg  
[www.ohbike.com](http://www.ohbike.com) 30, 63 or 100 mi RT Village Green, Indian Head, MD
- 17 **MD Wine Festival Bike Tour** Rolling Hills of Carroll County (Westminister, MD) 8, 30, 63 mi, Reg \$20/30 + pledge  
American Lung Assoc of MD 800-642-1184 ([marylandlung.org](http://marylandlung.org))  
Giant Food Bike, DC registration opens April 2005, email [waba@waba.org](mailto:waba@waba.org)
- 18 **Potomac Peddlers Century** Berryville/Clarke County/Jefferson County <http://bikeppts.org> 202-363-8687
- 24 **Amish 100** - <http://www.bikepace.com>

### O c t o b e r

- 8 **Seagull Century, Salisbury, MD** (All Levels) [www.seagullcentury.org](http://www.seagullcentury.org)  
\$40, Pay Friday nite All-U-Can Eat @ SSU  
Rooms reserved under TeamBSI Oct 8-10 (min 2 nites):  
Hampton Inn, Salisbury, MD 410-334-3080  
Rodeway Inn, Ocean City MD 800-531-9700
- 15 **Ebenezer AME Church 30K Ride & 5K Walk** \$15 Reg  
Sharon Laws 202-256-8275 (cell), Details TBA
- 16 **Tour du Port, Baltimore, MD Inner Harbor** Fee \$TBA  
Hybrid/Mountain Bike recommended.

#### RIDER TYPES

**A+ rider** cycles 50 or more mi at a pace of 18+ avg mi/hr  
**A rider** cycles 50-90 miles at 15-20 avg mi/hr  
**B rider** cycles 30-65 mi at 12-16 avg mi/hr  
**C rider** cycles 20-50 mi at 10-14 avg mi/hr  
**D rider** cycles 10-15 miles at a pace of up to 10 mi/hr

**ALWAYS WEAR A HELMET**



# Wanted Black Ski Event Photos for Marketing and Website Development

**Electronic Versions or  
Hardcopies needed**  
*(all photos will be returned)*

**Please send or give to  
Vicki McGill  
[nubian1@yahoo.com](mailto:nubian1@yahoo.com)**

Join Black Ski at the  
**Bill Pickett Rodeo**  
The Nation's Only Touring  
Black Rodeo  
Prince George's Showplace Arena  
Upper Marlboro, MD

September 24, 2005  
7:30 pm

**Black Ski Tickets \$15**

Sign-up for tickets at the  
General Body Meeting

For More Information  
Contact Tammy Madison  
301-346-3066  
tcmadisonesq@msn.com

**Get It While It's Hot!**

***Get Hot Wax Delivered to you via email  
before it hits the streets!***

By getting **HOT WAX** delivered to your  
email box

You get the latest news even earlier  
You get the full effect of the color layout.

***and best of all***

You'll be able to save the full color PDF ver-  
sion for future reference.

To get ***e-HOT WAX***

Email Vicki McGill, VP of Communications, at  
nubian1@yahoo.com.

Include your name, email address  
and membership number

**Do it today!**

Note: You'll need Adobe Acrobat Reader to open the document.

You can download the software-free of charge-  
by visiting [www.adobe.com](http://www.adobe.com).

## **ADVERTISE YOUR SERVICES IN HOT WAX**

**HOT WAX** is distributed monthly to 1100 Black Ski members located throughout the DC Metropolitan Area and beyond. By advertising your products and services, you can effectively reach a select and dynamic group of civic-minded professionals with a variety of sporting and social interests.

### **ADVERTISING RATES**

<b>Full Page</b>	<b>Half Page</b>	<b>1/4 Page</b>	<b>1/8 Page</b>
8 1/2 X 11	8 1/2 X 5 1/2	4 1/4 X 5 1/2	2 1/4 X 4 1/8
\$50.00 per issue	\$35.00 per issue	\$20.00 per issue	\$15.00 per issue
\$270.00 six issues	\$190.00 six issues	\$110.00 six issues	\$80.00 six issues

***Deadline for Ad Submission is the 15th of each month for  
inclusion in the following month's Hot Wax***

For details contact:

Vicki R. McGill, VP Communications  
nubian1@yahoo.com.com ***email*** • 202.526.6246 ***telephone***

## Black Ski Trip Calendar

Dates	Event	2005 Location	Trip Directors	Contact Number
<b>August</b>				
3 – 7	<b>NBS Summerfest</b>	South Beach, FL	Russ Bacon Sandra Lawson	(301) 218-2990 (202) 635-2815
<b>December</b>				
3 – 10	<b>Early Out – Learn to Ski</b>	Snowmass Aspen, CO	Bill Wyatt	(410) 448-7667
30 - Jan. 2	<b>Ski in the New Year</b>	Poconos	TBD	
<b>2006</b>				
<b>January</b>				
6 - 8	<b>Ski and Party Weekend</b>	Seven Springs, PA	Russ Bacon Bonnie Durant	(301) 218-2990 (301) 572-9058
11 – 16	<b>NBS Winter Carnival</b>	Heavenly Lake Tahoe, NV	TBD	
15	<b>1-2-Ski Learn to Ski/Board</b>	TBD	Kenny Greenhouse	(301) 627-8455
29	<b>Family Day</b>	Ski Liberty, PA	Joe Banks Charlotte Crawford	(301) 808-5465 (410) 448-3666
<b>February</b>				
3 - 5	<b>Ski Wisp</b>	McHenry, MD	Debbie Davis	(301) 345-2280
5 & 12	<b>1-2-Ski Learn to Ski/Board</b>	Ski Liberty, PA	Kenny Greenhouse Helen Greenhouse	(301) 627-8455 (301) 627-8455
11 – 18	<b>NBS Summit</b>	Banff-Lake Louise	Marian Webber Consandra Fox	(202) 583-8842 (301) 890-5043
23 – March 5 or later based upon extensions	<b>International See &amp; Ski</b>	Nagano, Japan (Kyoto, Tokyo, Hong Kong & Beijing)	Shirley France Dollie Huggins	(301) 890-3074 (301) 565-8283
<b>March</b>				
Mar. 9th – 12th	<b>NBS Eastern Region</b>	Attatash, North Conway NH	Beverly O'Bryant	(202) 882-4990
Mar. 18th – 25th	<b>Spring Fling</b>	Jackson Hole, Wyoming	Tanya Jones	(301) 680-8926



# ***black ski inc.***

WASHINGTON D.C.

## Early Season Warm Up at Aspen/Snowmass, CO. • Dec. 3- 10, 2005

***This trip is designed to help introduce new people to SKIING!***

**Never Ever?** If you have never skied before or if this is your second time then you can take advantage of Free skiing.

FREE lift, lesson, and rentals for 3 days included.

*(It's also for those who want to get that early start on the new season by improving their skills and having fun at the start of the Season!!)*

### Package Includes

- Round trip air transportation from BWI to Aspen, CO
- Round trip ground transportation via charter motor coach to Snowmass
- 7-night accommodations at the ski in/ski Top of The Village 2bd.2bth condos (4per/condo), Hotel rooms available with daily breakfast included
- Welcome party, Club party, Picnic on the Hill
- 5 day lift ticket
- Lessons available at all levels (additional cost \$69/day or \$150 /3day,
- Racing clinic available (same addl. Cost)
- Races at the end of the week

### Cost

\$910 condo

\$885 hotel

\$775 Never/ever (condo)

### PAYMENT SCHEDULE

June 19th \$200.00 deposit due

July 15th – \$150.00

Aug. 15th - \$150.00

Sept. 1st - \$150.00

Oct. 15th – Balance due

***Cancellations after September 06, 2005 will forfeit \$100.00 deposit.***

**Trip Director** Bill Wyatt, Home 410.448.7667 **E-mail** bskiracer@comcast.net

## Dance & Ski Party Weekend at Seven Springs Resort • January 6 – 8, 2006

### Price Includes:

- Roundtrip deluxe motor coach transportation with lite refreshments
- 2 nights lodging (In main Lodge)
- One night Dinner Buffet
- Private DJ Party Friday & Saturday Night
- Use of indoor pool and exercise room
- Lift ticket valid from day of arrival until day of departure
- Breakfast each morning
- Hospitality Room
- Complimentary overnight ski check
- Discounts on rentals and lessons

**Other activities onsite:** Roller Skating, Bowling, Racquetball, Snowmobiling, Mini Golf, Game Room

### Cost

\$385 PP Double Occupancy

\$335 PP Triple Occupancy

\$315 PP Quad Occupancy

\$199 Each Child ages 6-11 *(In room with 2 paying adults)*

Add \$20 PP additional for slopeside accommodations.

***Deduct \$50 from cost IF NOT taking bus transportation***

### Payment Schedule

\$100 September 1, 2005

\$100 October 30, 2005

Balance November 21, 2005

\$50 non-refundable after September 1, 2005

### Trip Directors

Russ Bacon

301-218-2990

Bonnie Durant

301-572-9058



## NBS Western Regional Winter Carnival at Lake Tahoe, NV • January 11 – 16, 2006

Heavenly Mountain is 10,067 feet high, with a vertical drop of 3,500 feet, miles of long groomed cruise runs, tree skiing, bowls, 360 inches of average annual snowfall, famous California sunshine and a breathtaking view of fabulous Lake Tahoe.

### Package Includes:

- Roundtrip air transportation from BWI to Reno, NV
- Roundtrip bus transportation to Lake Tahoe
- 6 nights hotel accommodations
- 3 day lift ticket at Heavenly Valley (4th and 5th days additional cost)

***NBS registration available for \$TBD (includes parties, happy hours, picnic and racing)***

### PAYMENT SCHEDULE:

\$150 deposit due July 15

\$200 Monthly due Aug 26, Sept 23, October 28

Final Payment due November 25

## Jackson Hole, WY – Grand Targhee • April 18th - 25th 2006

One of America's world-class ski resorts: Gateway to Yellowstone and Grand Teton National Parks. It invites skiers of all abilities to experience downhill skiing at its best. Just over Teton Pass - in Alta, Wyoming - is Grand Targhee Ski Resort, an area that enjoys an average of 480 inches of light powder a year, small crowds, and incredible scenery. This trip offers you two mountains to explore with over 2,000 acres of terrain and an additional 1,000 acres of terrain reserved for Snowcat Adventures and every inch covered by legendary Wyoming snow! Jackson Hole and Grand Targhee are rated among the top five resorts in the West for snow quality and quantity. Snowboarding, downhill, cross country, skate skiing, dog sledding, guided back country, heli skiing, and snowbiling are also available for you to enjoy!!

### Package includes:

- Roundtrip air to Jackson Hole, Wyoming via Delta from BWI or National
- Roundtrip ground transfers
- 7 nights Lodging at the Inn at Jackson Hole
- 5 day lift ticket – 4 day lift at Jackson Hole and 1 day at Grand Targhee
- Lodging - outdoor heated pool, Jacuzzi, sauna, on-site restaurant, and sushi bar
- Ski in – Walk out access
  - Daily Skier's Buffet Breakfast
- Transportation for Day trip to Grand Targhee
  - Black Ski welcome party
- Air Options BWI and National

**Lodging Options** The Inn is located at the base of Rendezvous Mountain, part of the Jackson Hole Mountain Resort and Ski Area, and 12 miles from the town of Jackson. With the aerial tram only 100 yards away, the Inn is considered one of the area's most premier Ski-in properties. Hotel room/2 people \$1190 pp

### PAYMENT SCHEDULE:

July 15th \$100

Aug 26th \$200

Sept 23rd \$200

Oct 21st \$200

Nov 25th \$200

Dec 15th \$200

Final payment due Jan 15th.

\$100.00 non-refundable after Aug 26th in addition to any monies paid on your behalf.

**10 days/9 nights Basic Package: \$2363\***

**Tour Price includes the following:**

- 5 nights accommodations at the 5 star Hotel Tokyu
- Breakfast Buffet and dinner daily
- Free use of hot natural mineral springs baths
- Welcome Orientation with drinks and snacks
- Transfers to Tokyo via Bullet train
- Half-day city tour upon arrival in Tokyo
- 2 nights accommodations at the 4 star Le Meridian Hotel
- Breakfast buffet daily in Tokyo
- Transfers to airport and all local taxes
- Round trip airfare to Osaka Airport
- Transfers to Kyoto, the ancient capital of Japan
- Meet and greet at Osaka Airport with Holidayz Guide
- Two nights accommodations at the 4 star Kyoto Okura Hotel including breakfast buffet
- Half day city tour
- Transfers to Habuka (Nagano Ski Resort)
- Up to 4 days of skiing (Lift tickets not included in package)

**\*Prices subject to Change, departure taxes and fuel surcharge**

*Optional tour program including day trips to Nagano City, Matsumoto Castle,  
and the Wild Monkey park available while in Nagano!*

***Trip Extensions***

**#2 Beijing \$679\* 6 Days/5 Nights**

- Round trip between Tokyo and Beijing
- 5 nights at 5 star King Wing Hotel
- Breakfast, lunch & dinner daily
- English speaking tour escort throughout trip
- Does not include \$24 departure tax, which must be paid in advance

**#1 Hong Kong \$545\* 3 Days/3 Nights**

- Round trip air between Tokyo Airport and Hong Kong
- 3 nights accommodations at the 5 star Renaissance Harbor View Hotel
- Breakfast daily
- half day city tour of Hong Kong
- Does not include \$24 departure tax which must be paid in advance.

**Payment Schedule**

2/28 \$300, 4/30 \$400, 6/30 \$400, 8/31 \$400, 9/30 \$400, and 11/30 balance.

***\$100 plus any expenses paid on your behalf and not refundable after June 30.***

**Trip Leader Shirley France**  
(301) 890-3074

**Assistant Trip Leader Dollie Huggins**  
(301) 565-8283

**Limited Availability Please call!**

## NBS Mini Summit - Banff, Canada • February 11 – 18, 2006

**ESTIMATED PRICES FROM \$1,400 to \$1,700 per person double occupancy.**

### Package includes

- Roundtrip air transportation from BWI to Calgary, Canada
- Roundtrip bus transportation to Banff, Canada
- 7 nights lodging (condo or hotel)
- Lift ticket (3,4,5or 6 days)
- NBS registration for parties, happy hours, picnic, racing, movies

### PAYMENT SCHEDULE

\$100 **DEPOSIT** (NON REFUNDABLE after 8/1/04) \$300 July 26, 2004  
\$300 August 23, 2004 \$300 September 27, 2004  
\$300 October 25, 2004 **BALANCE** November 22, 2004

### Trip Directors

Marian Webber 202-583-8842  
Consandra Fox 301-890-5943 e-mail BSIVAIL@aol.com

## Black Ski Youth Foundation, Inc. Cruise • June 11 – 18, 2006 Aboard Carnival's Destiny Cruise Ship

\$737 – \$1,777 Per Person based on double occupancy

**Ports of Call include:** San Juan • St. Thomas • Dominica • Barbados • Aruba

**Reserve your cabin NOW**

TOTAL PER PERSON PRICES (double occupancy) includes: roundtrip airfare from Baltimore to San Juan, round trip from airport to ship, 7 nights on the "Carnival Destiny", port charges and taxes, all meals on board and entertainment. (Does not include alcoholic beverages and gratuities.)

### INSIDE CABIN

\$1,477 - double occupancy with airfare (without airfare \$917)  
\$1,297 with airfare for 3rd and 4th passengers in same cabin  
\$ 737 - without airfare for 3rd & 4th passengers

### OUTSIDE CABIN

\$1,627 - double occupancy with airfare (without airfare \$1,066)  
\$1,327 - Outside cabin with airfare for 3rd & 4th passengers in same cabin  
\$ 766 - Outside cabin without airfare for 3rd & 4th passengers

### BALCONY CABIN

\$1,777 - double occupancy with airfare (without airfare \$1,216)  
\$1,357 - with airfare for 3rd & 4th passengers  
\$ 796 - without airfare for 3rd & 4th passengers

### PAYMENT SCHEDULE

\$75 Deposit due June 1, 2005 \$200 July 1, 2005 \$200 Aug 11, 2005  
\$200 Sept 11, 2005 \$200 Oct 11, 2005 \$200 Nov 11, 2005  
\$200 Dec 11, 2005 \$200 Jan 11, 2006 **BALANCE DUE FEBRUARY 1, 2006**

**Trip leaders:** Marian Webber 202-583-8842 BSYFCRUISE@aol.com or  
Kenny Greenhouse 301-627-8455 (home) KFG301@aol.com  
301-509-3522 (cell)

# Black Ski Inc. now has its own online virtual community

<http://sports.groups.yahoo.com/group/blackskiinc/>

Calendar updates delivered to  
your email address.

Member message board  
and chatting capabilities.

Upload activity photos  
and club files.

**Join Now!**



## Black Ski Happy Hour

Every 4th Thursday of Each Month

6 P.M.

The Eclipse

2820 Bladensburg Road, Washington, D.C.

(Free Buffet)

## Black Ski, Inc., Trip Payment Form

Anyone attending a trip that runs a weekend or longer must be a club member. Please use one form for each trip you are paying for as each sheet will be forwarded to the trip director. We cannot duplicate the information you provide as trip directors do not see your check. Each payment should be accompanied by a trip payment form.

Trip Name \_\_\_\_\_ Trip Date \_\_\_\_\_ Amount Enclosed \$ \_\_\_\_\_

Indicate Ski Package \_\_\_\_\_ Lessons? Yes ☐ No ☐ Rentals? Yes ☐ No ☐

Your Legal Name \_\_\_\_\_ M/F \_\_\_\_\_ Birth Month/Day \_\_\_\_/\_\_\_\_ (for ID purposes)

Note: **Airline tickets will be issued in the name you use. Please be consistent** Airfare Charge option? ☐ Yes ☐ No

Address \_\_\_\_\_ City \_\_\_\_\_ State \_\_\_\_\_ Zip \_\_\_\_\_

Telephone \_\_\_\_\_ Home \_\_\_\_\_ Work \_\_\_\_\_ BSI Member No. \_\_\_\_\_ E-mail \_\_\_\_\_

Please check all that apply: Air Option? ☐ Yes ☐ No Departing Airport ☐ BWI ☐ Dulles ☐ National

Ground Transfers? ☐ Yes ☐ No Accommodations ☐ Hotel Single/Double ☐ 2 Bedroom ☐ 3 Bedroom Condo

Roommate \_\_\_\_\_ Condo Mates \_\_\_\_\_

Do you mind opposite sex condo mates? ☐ Yes ☐ No Children? ☐ Yes ☐ No Lift Tickets ☐ 3 ☐ 4 ☐ 5 ☐ 6 days

Is your child: ☐ Under 5yrs ☐ 6 - 15 yrs ☐ 16 - 18 yrs Room Preference? ☐ Smoking ☐ Non-Smoking

Emergency Contact Name \_\_\_\_\_ Telephone (\_\_\_\_) \_\_\_\_\_

Mail this form with your payment to: Black Ski, Inc., P.O. Box 90762, Washington, D.C. 20090-0762

# BLACK SKI, INC. TERMS & CONDITIONS STATEMENT



WASHINGTON D.C.

Effective 9/1/00 Anyone going on a weekend or longer trip must be a club member.

An initial deposit per person is required to confirm your reservation. A non-refundable

deposit fee of \$50 will be assessed if cancellation is received after date specified on trip flyer.

## PAYMENTS

The payment schedule outlined on trip flyer must be adhered to unless arrangements are made with the Trip Directors. Failure to receive payment by date specified may cause loss of reservation (see cancellation for non-payment below). Monies received within thirty (30) days of the trip date will only be accepted in the form of a money order, certified check or cashier's check. No cash or personal check transactions will be accepted.

## CANCELLATION

(a) Request for cancellation: A request to cancel from a trip must be in writing and directed to the Trip Director. The participant by voluntarily requesting to be canceled from the trip will be assessed the non-refundable deposit fee (as specified on trip flyer) plus any payments that have been made to vendors on his/her behalf. (b) Cancellation for non-payment: The participant is required to adhere to the trip's published payment schedule. If adherence is to the contrary, you will be notified in writing after you have missed two consecutive scheduled payments. The participant will be allowed fifteen (15) days to bring his/her scheduled payment plan up-to-date. If payment is not received after notification, all monies may be returned to the participant minus the nonrefundable deposit fee plus any payments that have been made to the vendors on his/her behalf.

## REFUNDS AND TRANSFERS

*Black Ski Inc.* will make all attempts to refund participants whenever possible. Refunds will be made only after suitable replacements are found. Participant transferring funds from one trip to another must do so in writing and have authorization from both trip directors.

## TRIP INSURANCE

The purchase of trip cancellation/interruption insurance is recommended and is usually available for a nominal fee.

## ROOM ASSIGNMENT

*Black Ski* will attempt to honor all requests but reserves the right to make changes.

## SKIER'S RESPONSIBILITY CODE

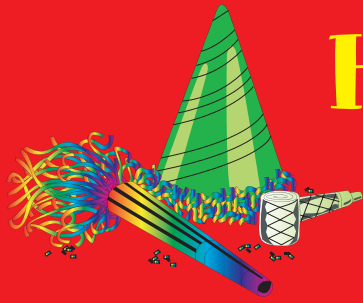
1. Always stay in control and be able to stop or avoid other people or objects.
2. People ahead of you have the right of way. It is your responsibility to avoid them.
3. You must not stop where you obstruct a trail or are not visible from above.
4. Whenever starting downhill or merging into a trail, look up hill and yield to others.
5. Always use devices to help prevent runaway equipment.
6. Observe all posted signs and warnings. Keep off closed trails and out of closed areas.
7. Prior to using any lift, you must have the knowledge & ability to load, ride and unload safely.

*Black Ski, Inc.* is not liable for irregularities, loss, injury or damages to persons and/or property during the trip. The participant accepts that there are risks inherent in skiing and adventure activities and hereby releases Black Ski, Inc. from any and all liabilities.

I accept, acknowledge and understand the Terms & Conditions Statement stated above.

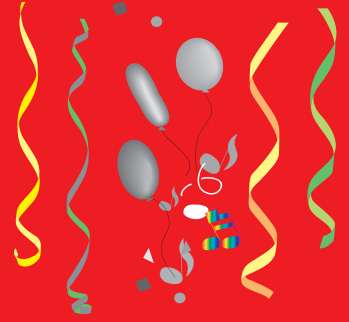
Signature \_\_\_\_\_ Date \_\_\_\_\_





# Happy Birthday

## *August Birthdays!*



Robert Adkins  
Lisa M. Alford  
Henry B. Allen  
John C. Arrington  
Jason Bailey  
Carole L. Battle  
Aaron Jean Bell  
Lorraine Blakeney  
Janice L. Bowie  
Benjamin R. Bowles  
Mary A. Bowling  
Michael W. Bowman  
Blanche R. Brown  
Sarah E. Brown  
Ruth L. Carter  
Leroy P. Chin  
Harding Chism  
John H. Coleman  
Maritza Cordero  
Al Cox  
Florence B. Crouch  
Lloyd C. Darasaw  
Carlton Davis  
Carly Davis  
Debbie L. Davis  
Toni Dennis  
Bob Dorsey  
Bonnie D. Durant  
Dorsey Evans  
Johnny A. Evans  
Deborah A. Fair-Brown  
Joyce J. Fontenot  
Kenneth A. Ford  
Alphonso W. Fudge

Jack C. Gardner, Jr.  
Jerome B. Glaze  
Barbara Green  
Hazel Harper-Johns  
Geraldine Harris  
Phil L. Harrison  
Hayward Hodges, Jr.  
Jesse House  
Vicki L. Hudson  
Mark A. Johnson  
Taylor SC Johnson-Barnes  
Beverly Johnson-Broadly  
Clay Jones  
Cinnamon Y. Jordan  
Dorothy M. Jordan  
Amy E. Jordan-Dawson  
Devyn Kennard  
Larry Luallen  
Sheila M. Maynor  
Aaron McClerklin  
Patricia A. McKiver  
Claudia L. McKoin  
Michael J. Milner  
Joel M. Morris  
Delores M. Newsome  
Shelbie Nicholson  
Beverly J. O'Bryant  
Clifford David Parks  
Norma G. Payton  
James P. Peters  
Theodore F. Peters, Jr.  
Elizabeth V. Primas  
Paul Pryde, Jr.  
Donald P. Reed, Jr.

Sheila K. Reeves  
Keith A. Reid  
George Samuels  
Danzie Seaward, Jr.  
Darla E. Sligh  
Carolyn J. Smith  
Lillie C. Spruill  
Edward D. Thomas  
Karlyn R. Walker  
William C. Watson, III  
Michael Wheet  
Betty Williams  
Peggy L. Williams  
Ray L. Williams  
Vivian C. Williams  
George L. Wooley  
Paula F. Workman  
Mildred M. Yarborough  
Gwendolyn Young  
Walter Young

## Welcome New Members

*Arlene R. Johnson*  
*Taylor SC Johnson-Barnes*  
*Samuel J. Perry*  
*Veda N. Simpson*

# MEMBERSHIP APPLICATION/RENEWAL/INFORMATION UPDATE FORM



## BLACK SKI, MORE THAN JUST A SKI CLUB

- ☐ New
 ☐ Renewal
 ☐ Lifetime  
☐ Individual
 ☐ Family (Includes parent(s) & children 18 and under)  
☐ New Address/Telephone Number
 ☐ Youth (7 to 18 years old)
 ☐ Conversion from Individual to Family

### New Members

Individual \$55  
 Family \$90  
 Youth \$15

### Annual Renewal Rates

Individual \$30  
 Family \$45  
 Youth \$10

### Lifetime Membership

\$500 Flat Rate

No charge for children under 7 yrs. if a parent is a member

Adult conversion to Family \$55

**Renewal after more than 18 months lapse** - Individual \$40 Family \$55

### Please Print

First \_\_\_\_\_ Middle Initial \_\_\_\_\_ Last \_\_\_\_\_

Date of Birth \_\_\_\_\_ Member Number \_\_\_\_\_

Spouse: First \_\_\_\_\_ Middle Initial \_\_\_\_\_ Last \_\_\_\_\_

Date of Birth \_\_\_\_\_ Member Number \_\_\_\_\_

Address \_\_\_\_\_

City \_\_\_\_\_ State \_\_\_\_\_ Zip Code \_\_\_\_\_ E-Mail Address \_\_\_\_\_

Telephone Number \_\_\_\_\_ Home \_\_\_\_\_ Work \_\_\_\_\_

Childs Name \_\_\_\_\_ Date of Birth \_\_\_\_\_

Childs Name \_\_\_\_\_ Date of Birth \_\_\_\_\_

**Consider making a generous donation to our Youth Program \$\_\_\_\_\_**

By joining Black Ski, Inc., as a member, I hereby release Black Ski, Inc., its officers, directors, employees, leaders and volunteers from any liability, damages or claims arising from injury or property damage sustained by me related to any Black Ski, Inc. activity or event. Total Fee Enclosed \$\_\_\_\_\_

I give permission for my name to be submitted to NBS sponsor list. Yes ☐ No ☐

Signature (**Not Valid Unless Signed**) \_\_\_\_\_ Date \_\_\_\_\_

Sponsor's Name \_\_\_\_\_ Date \_\_\_\_\_

**Sponsor gets \$5.00 certificate for use on Black Ski activities for each new Lifetime, Individual or Family membership.**

Indicate the Committee on which you would like to participate by checking the appropriate box(es)

- ☐ Advance Planning
 ☐ Youth
 ☐ Communications
 ☐ Fund Raising
 ☐ Business /Computer Support  
☐ Hospitality
 ☐ Budget & Finance
 ☐ Membership
 ☐ Other (Specify) \_\_\_\_\_

**Be sure you've completed the form properly and have included the total amount due.**

Send check or money order to:

**Membership Application/Renewal, Black Ski, Inc., P.O. Box 90762, Washington, D. C. 20090-0762**

## Black Ski, Inc. Executive Committee

President	Russell Bacon	301.218.2990	blackskipres@hotmail.com
Secretary	Tammy Madison	301.346.3066	tcmadisonesq@msn.com
Finance	Debbie Davis	301.345.2280	dldavis301@juno.com
Advanced Planning	Vacant		
Administrative Support	Ted Peters	301.808.3190	tvpeters@msn.com
Youth	Ray Williams	202.561.1129	ray.l.williams@verizon.net
Hospitality	Phillis Cooke	301.649.2127	pwcooke@aol.com
Membership	Drexel Agee	301.735.4411	zelex@erols.com
Racing	Bill Wyatt	410.448.7667	bwwyatt@hotmail.com
Fund Raising	Vacant		
Communications	Vicki McGill	202.526.6246	nubian1@yahoo.com

### Board of Directors

Russell Bacon  
Mickey Diggs\*  
Terry Knox  
Rod Quick  
*Ray Mott\**

Lowell Blagmon  
Helen Greenhouse  
Kathy Lambert, Secretary  
*Furman Marshall\**  
*Jim Thorne\**

Larry Coleman  
Ken Greenhouse  
Lenny Milner\*  
*Donny Clayton\**

\* denotes Founding Members - *Italics* denotes Inactive Members

### Communications Team

Karlyn Walker, Communications Coordinator  
Clarence Bard, Ski Club Hotline



**Black Ski, Inc.**  
P.O. Box 90762  
Washington, D.C. 20090-0762

**HOT WAX - The Official Publication of Black Ski, Inc**

www.blackskiinc.org • www.blackskiinc.net • www.blackskiinc..com • 301.231.3900