


HOT WAX



Vol. 41 No. 1

The Official Publication of Black Ski Inc.

January 2013



Happy New Year

Black Ski's Outlook for 2013 - Great Events, Community Outreach and Engagement

We are embarking on our **41st** year of greatness in 2013! Throughout my membership in Black Ski I have heard about the many great outreach activities and non-ski/board events that our club has lead or participated in. With this in mind in 2012 we reintroduced social meetings providing a social atmosphere where we've shared information about trips and upcoming events and partook of great food, libations and fellowship. In case you missed our Christmas Party, it was a great night of wonderful food, dancing and fun. We also brought back our **Monthly Happy Hours** that went on for many, many years where we've danced, eaten and toasted to future great times - please join us at Carolina Kitchen in Hyattsville, MD on January 16th for this month's happy hour. In **April**, we will have our **Après Ski Party**. **May** will take us back to **Lot 1** in Rock Creek Park for our annual **Black Ski Memorial Day Weekend Cook Out**. And Tickets will be available for July's Annual **Crabfeast** at our

February General Body Meeting. And last but not least we will have many opportunities for club members to engage in community outreach and volunteering reminiscent of the days when we participated in Project Harvest and other great events throughout the Washington DC area.

Did you know: January is **National Learn to Ski & Snowboard Month**. Ski areas and resorts throughout the country are celebrating with special offers to get children and adults out on the snow and taking lessons from a professional instructor. Take the "**Bring a Friend Challenge**" by inviting and helping enroll at least one newcomer to a beginner lesson or lesson package provided by a professional instructor. Sign up for the challenge at www.bringafriend.org. You can win prizes from Challenge sponsors for helping to enroll newcomers even if you are one yourself. You can enter more than once by introducing several different newcomers. The website www.skiandsnowboardmonth.org provides a listing of states with locations where learning programs are taking place. The site helps those new to snow sports with practical information on getting started and also includes tips for those who want to improve. Sign someone up TODAY!

—Vicki R. McGill, Black Ski, President

Ski Center Demo Day at Whitetail - January 4, 2013

Take a snow day and join the crew from Ski Center for one of the most exciting ski days of the year! Stop by Ski Center and pick up a voucher for a \$30 lift ticket and all the demos you can handle!

Ski Chalet Customer Appreciation Days - January & February

Timberline - \$3 Lift Ticket: Thursday, January 10, 2013 - Good from open to close - Ski all day and night session!

Whitetail, PA - \$30 Lift Ticket: Wednesday, February 6, 2013 - Ski Whitetail all day

Pick up your free voucher at Ski Chalet. Payment is due when redeeming your voucher at the specific mountain.

General Body Meetings

January 22, 2013 - The 201 Bar
201 Massachusetts Ave. NE, Wash, D.C.

February 19, 2013

19th Street Baptist Church,

4606 16th Street, N.W., Wash., D.C.

Contact Beverly Fields, VP Membership 202.271.2460

General Body Meetings are held the fourth
Tuesday of each month

What's Inside:

Upcoming Black Ski Events	2, 4, 5, 7 - 12
Black Ski Elections are Coming	3
Welcome Our New Members & Orientation	5
Avalanche Safety	6 - 7
January Birthdays	13
BSI Forms	13 - 15

Black Ski Event Calendar

<i>Dates</i>	<i>Event</i>	<i>Location</i>	<i>Trip Directors/POC</i>	<i>Contact Number</i>
January				
12	New Members Orientation	White Oak Library, Silver Spring, MD	Beverly Fields	(202) 271-2460
16 - 21	NBS-Western Region Winter Carnival	Squaw Valley Ski Resort, Lake Tahoe, CA	Ken Moris	(301) 792-0960
16	BSI Monthly Happy Hour	Carolina Kitchen, Hyattsville, MD	Vicki McGill	(202) 526-6246
22	BSI General Body Meeting	The 201 Bar, Washington, DC	Vicki McGill	(202) 526-6246
27	BSI Day Trip	Whitetail Resort, Mercersburg, PA	daytrips@blackskiinc.org	
February				
1 - 3	NBS-MidWest Region Winterfest	Seven Springs Mountain Resort	Darlene Bing Azara Turaki	(202) 262-6424 (202) 640-9324
9	BSI Family Day Trip	Whitetail Resort, Mercersburg, PA	daytrips@blackskiinc.org	
19	BSI General Body Meeting	19th St. Baptist Church	Beverly Fields	(202) 271-2460
20	BSI Monthly Happy Hour	Carolina Kitchen, Hyattsville, MD	Vicki McGill	(202) 526-6246
23 - March 2	NBS 40th Anniversary Summit	Aspen Snowmass	Gloria Savoy Michelle McLean	(301) 890-4557 (240) 461-1515
March				
26	BSI General Body Meeting	19th St. Baptist Church	Beverly Fields	(202) 271-2460
17 - 24	Spring Fling 2013	Telluride, Colorado	Tanya Jones Mike Saizan	(301) 680-8926 (301) 297-7434
20 - 24	NBS-ER Winterfest	Mont Tremblant, Quebec Canada	Vicki McGill	(202) 526-6246
26	BSI General Body Meeting	19th St. Baptist Church	Beverly Fields	(202) 271-2460
April				
23	BSI General Body Meeting & Election	19th St. Baptist Church	Beverly Fields	(202) 271-2460
May				
26	BSI Annual Cookout	Rock Creek Park, Lot 1	Vera Johnson	(301) 482-1038
28	BSI General Body Meeting	19th St. Baptist Church	Beverly Fields	(202) 271-2460
June				
25	BSI General Body Meeting	19th St. Baptist Church	Beverly Fields	(202) 271-2460
July				
7	Annual BSI Crab Feast	Sandy Point State Park	Darlene Bing	(202) 262-6424
23	BSI General Body Meeting	19th St. Baptist Church	Beverly Fields	(202) 271-2460

Visit www.blackskiinc.org for the latest updates on our event schedule

OUR CONDOLENCES

**THE BOARD OF DIRECTORS, EXECUTIVE COMMITTEE AND MEMBERS OF
BLACK SKI INC. WOULD LIKE TO EXPRESS CONDOLENCES TO THE FAMILY OF
LONG TIME BLACK SKI MEMBER BRADFORD "BRAD" TATUM
ON HIS PASSING ON DECEMBER 26, 2012**

**MR. TATUM WAS A SENIOR OLYMPIAN WHO WON COUNTLESS GOLD MEDALS
FOR SWIMMING AND WAS FEATURED IN THE WASHINGTON POST, ON PBS AND
IN THE DOCUMENTARY FILM "AGE OF CHAMPIONS" ALONG WITH HIS BROTHER JOHN.
BRAD WAS ALSO A DC PUBLIC SCHOOL TEACHER, A PRINCIPAL AND
ASSISTANT D.C. SUPERINTENDENT FOR ELEMENTARY SCHOOLS.**

**LETTERS OF CONDOLENCE AND CARDS CAN BE SENT TO THE TATUM FAMILY AT
234 ONEIDA ST, NE, WASHINGTON, D.C. 20001**



Black Ski, Inc.

2013 Election

NOMINATIONS OPEN

Email nominations to Nominations@BlackSkiInc.org

*Who will lead us during our 5th decade?
If not you, who? If not now, when?*

The Annual Election will be held in April 2013.

Are you or someone you respect the right person to lead Black Ski into the future?

Self-nominations are encouraged!

The Nominating Committee seeks nominees for these positions:

Positions Elected in Odd Years

VP – Finance

VP – Advance Planning

VP – Communications & Public Relations

VP – Membership

VP – Administrative Support

Four (4) DIRECTORS

Qualifications:

- Board of Directors: Full member for 3+ years; 1 year of administrative, business or organization service/experience; age 18+
- Officer: Full member for 2 consecutive years; age 18+

Full position descriptions available at www.BlackSkiInc.org

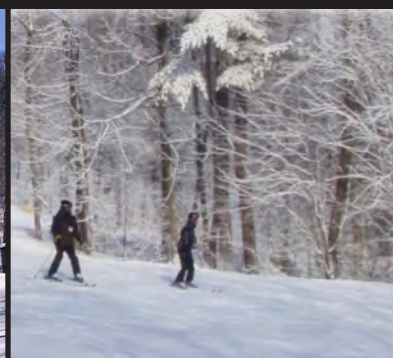
Select “Documents” tab, then “Bylaws”.

Email nominations to Nominations@BlackSkiInc.org

Please insure that the nominee agrees to serve!

Please include contact info for nominee.

Positions Descriptions Available at www.blackskiinc.org/elections.html



Learn to Ski/Snowboard or Improve Your Skills Locally
Package Includes Lift Ticket, One Hour Lesson and Rentals
Beginner and All Mountain Packages Available
Lift, Lesson and Rentals also sold separately
Bus Transportation Departs from the Greenbelt, MD
Sign-up early, transportation space will be limited.

January 27, 2013 • February 9, 2013

Bus departs Greenbelt Metro at 6:30 am • Arrives at Resort at 8:00 am
Departs Resort at 4:00 pm • Returns to Parking Area at 5:30 pm
Michael Saizan, Day Trip Coordinator email: daytrips@blackskiinc.org

Quantity	Price	Package	Package Includes
	\$125	All Mountain	Equipment Rental, Total Trail Access Lift Ticket, Lesson and Bus
	\$112	Learn to Ski/Board	Equipment Rental, Limited Trail Access Lift Ticket, Lesson and Bus
	\$97	Transportation & Lift	All Trail Access Lift Ticket and Bus
	\$95	All Mountain	Equipment Rental, Total Trail Access Lift Ticket, and Lesson Only
	\$82	Learn to Ski/Board	Equipment Rental, Limited Trail Access Lift Ticket, and Lesson Only
	\$67	Lift Only	All Trail Access Lift Ticket Only
	\$30	Transportation Only	Transportation Only
	\$10	Meal Ticket	Discounted Meal Voucher for Food Court

Total \$ _____ **Date:** ☐ January 27 ☐ February 9

Participant Name _____ **E-Mail** _____

Phone: Home _____ Cell _____ Work _____

Age Group: Adult _____ Youth-Age _____ Youth Guardian _____

Emergency Contact Name _____ **Telephone** (_____) _____

Mail this form with your payment to: **Black Ski, Inc.**, P.O. Box 90762, Washington, D.C. 20090-0762
 Payments are Fully Refundable up to the Tuesday before the Trip. Checks accepted up to two weeks before trip date. For More Information and to
 Pay via PayPal at www.blackskiinc.org/daytrips.html

**We are Proud of the Major Success of Our
2012 Membership Drive and
Send a Warm Welcome to Our New Members
Who Joined During the Drive**

New Individuals

Jacqueline Askew	Jacquelyn Kelley
Veronica Best	Raymond Kidd
Vonda Blakley	Richard Lake
Natasha Brooks	George McCrea
Timothy Brooks	Kathleen Miles
Rashleigh Bruce	Dean Mitchell
Diane Burton	Tia Norman
George Butler	Oduwa Osarenkhoe
Ellsworth Coley	Erika Peace
Brendus Cottren	Linda Rainey
Sylvia Crawford	Melvin Ridley
Tonya Edmonds	Douglas Rodgers
Robert Ferguson	Nicole Swann
Marilyn Forney	Robin Tillmon
Dwayne Golden	Dolores Tolbert
Linda Hall	Eugene Webb
Jerry Hoggard	Lawrence Wilkerson
Claudia Howard	Calvin Williams
Robert Hymes	Monique Williams
John Jackson	Ronald Williams
Tanya Jefferson	Carol Wilson
Deborah Jenkins	Michael Wilson
Carol Jones	Thomas Wright
Dwayne Jones	Thomas A. Wright, Jr.

New Lifetime Members

Terry Anderson
Richard Brown
Nichelle French (*Youngest Lifetime Member*)
Alice James
Margaret Marsh

New Youth

Remi Allen
Sierra Edmonds
Tobias Felton
Braxton Peace

New Families

Gregory and Jacqueline Askew and Family
Donald and Tanya Barnett Family
Deborah and Patrick Berry Family
Kim and Guy Blocker Family
Selina and James Brodie and Family
St. Elmo Crawford and Christina Dyck Family
Tracie and Levi Chaconis Family
Jean Holmes and Family
Moses and Denese Pettigrew and Family
Kierstan and Robert Turner Family
Turea Walker and Earl Jackson Family

Welcome to Black Ski Inc!

You Are Invited to the
2013 Membership Orientation
January 12, 2013
1:00 pm — 4 pm



White Oak Community Library

11701 New Hampshire Avenue
Silver Spring, MD 20904

**Here Is Your Chance To:
Meet Your Board of Directors
Meet Your Executive Committee
Meet Other New &
Current Black Ski Members**

To Get All of Your Questions Answered
Including:

- How Do I Participate In Black Ski Inc. Trips?
- Who Do I Pay To Attend Black Ski Inc. Events?
- Where Do I Purchase Cool Black Ski Inc. Club Merchandise?
- How Do I Find Out About Future Black Ski Inc. Trips and Activities?
- How do I Volunteer to Help with Trips, Events and Activities?
- Is There More To Do as a Black Ski Inc. Member Than Ski or Snowboard?
- Is Black Ski Inc. Part Of A Larger Organization?

FOR DIRECTIONS VISIT:

www.montgomerycountymd.gov/library

**WE LOOK FORWARD TO SEEING YOU
JANUARY 12TH!**

RSVP to BEVERLY FIELDS, VP MEMBERSHIP
membership@blackskiinc.org

Avalanche Safety

Recent extremely heavy snow falls throughout Colorado and California have increased the risk of avalanches this ski season. Christmas Eve, a Lake Tahoe area avalanche claimed two lives including that of a ski patrol and another at Aspen Snowmass on December 30th and we are still very early in the ski season. In light of this ongoing risk now is a great time to begin thinking avalanche safety and doing all that we can to avoid them. Below is a [brief primer](#) on avalanche safety meant to point you in the direction of learning more, seeking out training and getting the right gear especially if you are a fan of skiing and boarding backcountry and unpatrolled areas.

To Avoid an Avalanche, Learn How to Read the Terrain

Slope steepness - Slopes of 30-45 degrees are the ones most likely to avalanche, but anything in the neighborhood of 25-60 degrees can do so under certain conditions.

Slope profile - Convex slopes are clearly the most dangerous; stay away from them when you can, especially during the period from late December thru January. Concave slopes are less dangerous, but they can - and sometimes do - avalanche.

Slope aspect - North-facing slopes are the most likely to avalanche during the dreaded middle of winter. But south-facing slopes can become dangerous in the spring and during sunny days, as the sun begins to rise higher in the sky.

Also, slopes that garner snow during windy conditions are dangerous because wind-borne snow adds to their rapid accumulation; the hard, hollow-sounding wind slab may develop there. However windward slopes (those slopes sitting into the wind) generally have less snow and benefit from wind compaction.

Ground cover - Areas with large rocks, trees and heavy brush here and there are a good help in anchoring the snow on the mountain. Smooth, grassy slopes are much more dangerous.

Gearing Up

Things go wrong and sometimes despite precautions we can get caught in an avalanche. And that's why we should always carry the right gear AND know to use it.

Always carry a beacon, a shovel, and a probe pole. Seriously consider wearing a helmet (nearly 30% of avalanche fatalities are caused by trauma) and wearing an Avalung (you can breathe up to one hour if you are completely buried). Wear releasable bindings...if your skis or snowboard stay on in an avalanche its just like jumping into a lake with them on...you are much more apt to get pulled to the bottom.

Avalanche Rescue

If you are caught...

- Try to ski or board off the slab by maintaining momentum and angling to edge of slide.
- Simultaneously, if you are wearing an Avalung, get it in your mouth
- If you get knocked down and you have an Air Bag System deploy it.

- Discard poles (never ski in the backcountry with your pole straps on).
- Hopefully you have releasable bindings and your skis or board come off; if they do, roll on to your back with your feet downhill. Swim hard up stream to try to get to the rear of the avalanche.
- Dig into the bed surface to slow you down and let as much debris as possible go past.
- Grab a tree if you can
- FIGHT!
- As the avalanche slows, try to thrust your hand or some part of your body above the surface and then stick a hand in front of your face to make an air space around your mouth.
- If completely buried, try to remain calm - hopefully your partners have practiced rescue techniques and they will quickly find you.

If your partner gets buried, you don't have time to go for help! You must save your partner...if you go for help it will be too late!

- Yell to alert your partners and other people that may be in the area. Watch the victim! Memorize the last seen point.
- Make sure it is safe to search. Don't become a victim yourself.
- Designate a leader and quickly develop a search plan.
- Look for surface clues like gloves, boots, and other equipment.
- Conduct a beacon search. Get close and probe BEFORE you dig.

FACT: Many buried victims die of asphyxiation within 10 minutes unless they are wearing an Avalung.

It is critical to attend an avalanche class to learn how to carry out a fast and effective rescue.

And then to frequently practice using your beacon and practice carrying out a rescue before you're faced with the real thing!

Rescues can be chaotic scary affairs; it may be getting dark, it may be cold, it may be stormy. Be prepared. Be ready! Know what you are doing!

Additional Resources and Training

- American Avalanche Association: www.avalanche.org/
- US Forest Service National Avalanche Center: www.fsavalanche.org/
- American Institute for Avalanche Research and Education www.avtraining.org/Avalanche-Training-Courses/
- American Avalanche Association www.americanavalancheassociation.org/

FACT: U.S.A. Avalanche Fatalities: 2011 - 2012

Thirty-four people died in avalanches in the US this past winter and many more had very close calls. 32 fatalities were snowmobilers, climbers, skiers, and snowboarders out enjoying a day in the backcountry.

GEARING UP FOR AN AVALANCHE

You should carry the following items or tools when you go into the backcountry

- Snow saw
- Probes
- Slope meter
- Monocular (can magnify up close and far away)
- Walkie talkies
- Bivy Sack(bivouac sack)
- First Aid kit (see suggested content list)
- Climbing skins
- Beacon
- Shovel
- Backpack
- Spare Strap
- Snow science kit
- Avalung or an Air Bag System
- Helmet
- Headlamp
- Water bottle
- Stove and fuel
- Tool kit
- Map and compass

Repair Kit/Survival Kit

- Extra food and water
- Extra clothes such as gloves, hat, socks, insulated coat and pants
- Headlamp
- Extra binding parts
- Pocket tool with posi-drive screwdriver
- Wire, duct tape
- Epoxy, strip screw inserts, steel wool
- Candle/matches/lighter/firestarter
- Space blanket or light bivy sack
- Chemical hand warmers
- Knife
- Extra beacon & headlamp batteries
- Consider carrying a light gas stove to melt snow (they weigh about the same as a liter of water)

Other items may include:

- Whistle
- Skin wax
- Food, Water, Extra clothes

First Aid Kit

- Tape
- Steri-strips or butterfly bandages
- Gauze rolls - 2
- Band-aids
- Variety sterile dressing
- Blister treatments
- Neosporin or equivalent
- Sunscreen
- Pain medication
- Safety pins
- Strong scissors
- Pocket mask
- Airway
- Nitrile gloves



Special January General Body Meeting Location



January 22, 2013 - 7 pm

@ The 201 Bar

201 Massachusetts Avenue NE,
Washington DC

Come out and Socialize with Club
Members - Trip Directors & Officers

**Located on Capitol Hill...Metro Accessible
...Just down the street from Union Station
Parking available throughout the area**



YouthFest 2013

March 8 – 10, 2013

The following is some general information regarding the 2013 YouthFest Clinic that will be held March 8, 9 & 10th at Pats Peak Ski Area in Henniker Vermont. Other than hosting the event a week later (by popular demand from NBS Clubs) to avoid conflicts with those that want to attend the NBS summit, most of the details remain unchanged from last years event.

Now in its fourth year, YouthFest Camp, sponsored by the Boston Ski Party, is an opportunity for youth to develop their skills in racing and skiing. The camp will include Race Training with experienced race coaches, beginner, intermediate and advanced training runs on the mountain. As in the past, members of the U.S. Race team may also assist with training more experienced racers. There will also be a range of fun youth and family oriented events both on the hill and back at our hotel. The exposure that some of the regions top racers have gotten at this event has resulted in scholarships and other high level race opportunities for our young NBS racers.

LETS KEEP SHOWCASING OUR YOUNG STARS!!!

This year's event will likely be our largest. **Space will be limited and registration may close earlier than in the past.** If you are interested you must register early. Please remember that this is a gate training clinic camp designed for experienced beginner, intermediate and advanced skiers. It is not a learn to ski program. While early beginners (youth and parents) are welcome, they will be required to take group lessons at there own expense as necessary. They can still register and participate in all other YouthFest activities. We expect to have approximately 60 racers from Boston and other NBS clubs.

The Camp begins the morning of Friday March 8th. If you cannot make Friday, you will still be able to participate Saturday and Sunday.

To participate, all participants must register and pay the \$50 registration fee before January 18th. After that date you will be charged a late fee. The cost of lift tickets for 3 days is approximately \$70 and for two days \$60. These tickets include a "Step up to POP Night Ticket on Saturday evening. This includes the costs of tubing as well. **PLEASE NOTE: COURTESY OF ONE OF OUR SPONSORS, WE HAVE AN EXCITING EARLY REGISTRATION/SKIING DISCOUNT: IF YOU REGISTER BY JANUARY 18th (NO EXCEPTIONS), WE WILL PURCHASE YOUR LIFT TICKETS!!!** That's right – FREE SKIING!

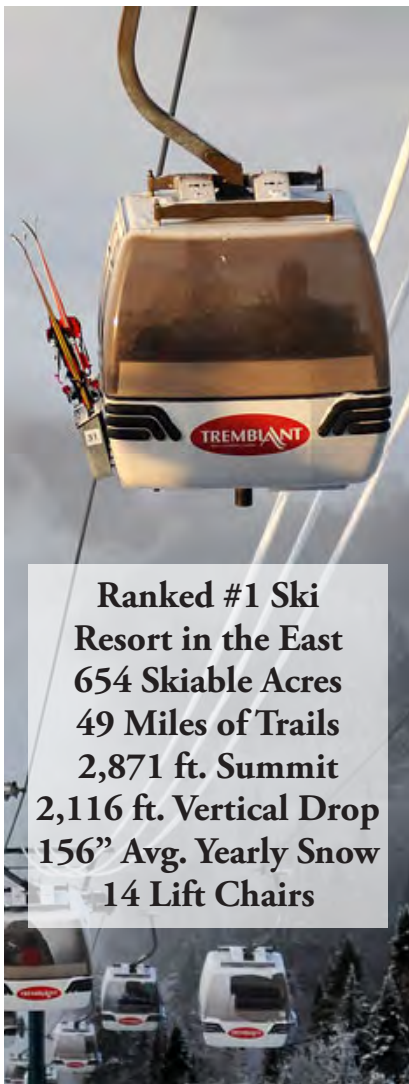
REGISTER EARLY TO TAKE ADVANTAGE OF THIS INCENTIVE (NO EXCEPTIONS).

Hotel accommodations at the **Hampton Inn, Concord/Bow** must be made ASAP for each night (available each night, Thursday through Saturday). While we have a room block (Boston Ski Party YouthFest), they will sell out so book your reservation now!!! **When making your reservation, tell them you are with the Boston Ski Party YouthFest Group.**

For more information, please contact:

Beverly Broady at (301) 249-5955 or by email at youth@blackskiinc.org

Registration Forms Available at www.blackskiinc.org



**Ranked #1 Ski
Resort in the East
654 Skiable Acres
49 Miles of Trails
2,871 ft. Summit
2,116 ft. Vertical Drop
156" Avg. Yearly Snow
14 Lift Chairs**

2013 NBS ER WINTERFEST

March 20 – 24, 2013

Mt. Tremblant Ski Resort

Quebec, Canada

Package Includes: 4 Nights Lodging, Ground Transportation, 4 Day Lift Ticket, Welcome Reception, Discounted Ski School and Rentals, Picnic on the Hill, Parties and Happy Hours.

\$895 per Person

1 Bedroom Condo (Based on Double Occupancy)

Le Lodge de la Montagne (★★★★) features wonderfully appointed hotel rooms as well as stylish condo suites offering a fully-equipped kitchen. Enjoy a direct access to the slopes and to the gondola for the Casino.

\$865 per Person

1 Bedroom Condo (Based on Double Occupancy)

La Tour des Voyageur (★★★★) this elegant hotel includes hotel rooms and condos featuring direct access to all activities such as skiing, boarding or just walking around the pedestrian village. Most units feature a fully-equipped kitchen. Discover the feeling of top quality service and facilities at La Tour des Voyageur. Conveniently located near the action of the pedestrian village.

Payment Schedule

Deposit \$400 - January 10, 2013

\$500 or Final Balance Due - February 8, 2013

Trip Director: Vicki McGill - (202) 526-6246 **email -** winterfest@blackskiinc.org

Trip Payment Form

Anyone attending a trip that runs a weekend or longer must be a club member. Please use one form for each trip you are paying for as each sheet will be forwarded to the trip director. We cannot duplicate the information you provide as trip directors do not see your check. Each payment should be accompanied by a trip payment form. **Note: Airline tickets will be issued in the name you use. Please be consistent**

NBS-ER Winterfest 2013 March 20 - 24, 2013 Amount Enclosed \$ _____

Your **Legal** Name First _____ Middle _____ Last _____

M/F _____ Birth Month/Day/Year ____/____/____ BSI Member No. _____

Address _____ City _____ State _____ Zip _____

Telephone _____ Home _____ Work _____ Cell _____

E-mail _____ Please check all that apply: Ground Transfers? ☐ Yes ☐ No

Accommodations: ☐ Le Lodge de la Montagne - 2 Per Condo - \$895 ☐ La Tour des Voyageur - 2 Per Condo - \$865

Condo Mate _____

Do you mind opposite sex condo mates? ☐ Yes ☐ No Do you mind Children? ☐ Yes ☐ No

Emergency Contact Name _____ Telephone (____) _____

Mail this form with your payment to: Black Ski, Inc., P.O. Box 90762, Washington, D.C. 20090-0762



Sundance Film Festival 2014 - Park City, Utah

January 18 - 25, 2014

Ski by Day • Enjoy the Film Festival Every Night!

Park City Mountain Resort - is Great for Beginners and Expert Skiers and Boarders with extended glade terrain, upgraded on-mountain restaurants, expanded beginner terrain, and a ski-and-snowboard park. Enjoy the deep powder bowls, long groomed runs, gentle beginner slopes, steep chutes, and three world-class terrain parks. We will be there during the Sundance Film Festival, the premier showcase of contemporary US and international independent film.

Trip Includes:

- Roundtrip Airfare from BWI to SLC (Estimated Cost included in Package)
- Roundtrip charter bus transfers between airport and lodging
- 7 night lodging accommodations at the Park City Peaks Hotel or Edelweiss Haus Condominiums
- 5 day lift ticket to Park City Mountain Resort (Canyons and Deer Valley Lift Tickets Available for Additional Cost)
- Sundance Film Festival Information will be Provided as Soon as Announced - Event Tickets Additional

Accommodations

Edelweiss Haus - Short Walk - Directly across from the Park City Mountain Resort lifts **Package Cost - \$1,765**

This Quad Occupancy two bedroom and two full bath condominium features with a queen bed and twin/twin beds, gas fireplace, cable TV, wireless internet, phone, fully-equipped kitchen, refrigerator, microwave, coffee maker, dishwasher, laundry area, outdoor hot tub, outdoor heated pool, sauna rooms, and shopping nearby.

Park City Peaks Hotel - Shuttle to Park City Mountain Resort's Slopes **Package Cost - \$1,810**

Spacious Double Occupancy Hotel Rooms featuring 2 Queen Beds or 1 King Bed, Welcome wine and cheese reception, Full hot breakfast daily, Daily "cookie man" room delivery, "Blues Cruise" mountain tour with Maxine and Wireless high-speed internet access. Many rooms at the hotel offer spectacular views of the Park City mountain ski resorts. Hotel Amenities: heated indoor/outdoor swimming pool, whirlpools, dry sauna and restaurants.

Payment Schedule

February 19, 2013 - Deposit	\$300	May	\$175	August	\$175
March	\$175	June	\$175	September	\$175
April	\$175	July	\$175	October	Final Balance Due

Trip Director Vicki McGill • 202.526.6246 • **Assistant Trip Director** Darlene Bing • 202.262.2624

Email sundance@blackskiinc.org • More information and make payments online at: www.blackskiinc.org/sundance.html

Cancellations requests must be made in writing. Any requests submitted after June 30, 2014 are subject to a \$250 cancellation fee. Please refer to Black Ski's Terms and Conditions for more information.

Sundance Film Festival/Park City UT **January 18 - 25, 2014** **Amount Enclosed \$** _____

Anyone attending a trip that runs a weekend or longer must be a club member. Note: Airline tickets will be issued in the name you use.

Your Legal Name First _____ Middle _____ Last _____

M/F _____ **Birth Month/Day/Year** ____/____/____ **BSI Member No.** _____

Address _____ **City** _____ **State** _____ **Zip** _____

Telephone _____ **Home/Work** _____ **Cell** _____ **E-mail** _____

Please check all that apply: **Air Seat from BWI?** ☐ Yes ☐ No **Ground Transfers?** ☐ Yes ☐ No

Accommodations: ☐ **The Peaks** - 2 Per Condo - \$1765 ☐ **Edelweiss** - 4 Per Condo - \$1810

Room/Condo Mate(s) _____

Do you mind opposite sex condo mates? ☐ Yes ☐ No **Do you mind Children?** ☐ Yes ☐ No

Emergency Contact Name _____ **Telephone ()** _____

☐ **I Agree to the Black Ski's Terms and Conditions**

Mail this form with your payment to: Black Ski, Inc., P.O. Box 90762, Washington, D.C. 20090-0762



Spring Fling 2013 Telluride, Colorado

Sunday, March 17 – Sunday, March 24

Package Price: \$1780.00 pp



Telluride Ski Resort – A luxurious world-class resort with excellent terrain for all level skiers.

- Ranked No. 5 overall by Ski Magazine readers.
- The resort's **new Revelation Lift** reaches 12,570 feet and accesses Revelation Bowl, the ten Gold Hill Chutes and backcountry terrain.
- Uptown and downtown, chic and bohemian, a historic mining town, the Old West meets the New West.
- Everything you need is within walking distance via the free gondola. Free bus services around town.

Trip Includes:

- Round trip air to Montrose Airport - from BWI or National Airports via American Airlines.
- Ground transportation to and from Montrose airport to the Resort - a 1.5 hour drive.
- Five-day lift ticket.
- Welcome Party & Private Black Ski Dinner.
- Seven nights lodging at The PEAKS Resort & SPA with Ski In/Ski Out
 - ❖ Ranked one of the top 50 places to Ski and Stay in North America
 - ❖ Ranked 15th Best Spa in North American by Conde Nast Traveler
 - ❖ Two person hotel room with two king beds and mini frig - \$1780 pp
 - ❖ Single occupancy hotel room +\$680
 - ❖ Located in the Mountain Village in the center of activity
 - ❖ The Peaks web site: <http://thepeaksresort.com/>
- **Airline Baggage Fees NOT included in price– fees paid at check-in**
- **Possible Airline Fuel Surcharges NOT included in price**



Optional Items:

- 6-day lift ticket +\$50; 4-day lift ticket -\$40; 3-day lift ticket -\$80 (Sorry, no senior rates)
- Deluxe Continental Breakfast Buffet +\$90 required for both occupants per room
- A few condos per special request, at the Sun Peaks and Bear Creek Lodge (consult with Trip Director)

NOTE: Trip is Sunday to Sunday, not Saturday to Saturday

Payment Schedule:

\$250	Initial deposit July 1, (non-refundable after Sept 1)	Balance	January 25, 2013
\$250	August, September, October, November, December		

Trip Director - Tanya Jones H-301-680-8926 - Tanyalj20904@yahoo.com

Assistant Trip Director - Mike Saizan H-301-297-7434 – C-301-785-2964 – bsi.atd@verizon.net

Full Legal Name _____ BSI Member # _____

Address _____ City _____ State _____ Zip _____

Full date of birth, M/D/Y _____ Phone: H _____ C/W _____ M / F

E-mail _____ Roommate _____

Emergency Contact _____ Phone # _____

Lodging: ☐ Double Hotel Room with two King Beds - (\$1780 pp) ☐ Single Occupancy - Hotel Room (+\$680)

Air (via AA): ☐ BWI ☐ National ☐ Doing Own Air (-\$518) ☐ Condo Option (Contact TD)

Lift Tickets: ☐ 5-Day ☐ 6-Day (+\$50) ☐ 4-Day (-\$40) ☐ 3-Day (-\$80) ☐ No Lift Ticket (-\$236)

☐ Continental Breakfast Buffet (+\$90) ☐ Travel Insurance Info (via Winter Ski & Sport web site)

☐ I agree to the TERMS and CONDITIONS STATEMENT of Black Ski, Inc

Mail to Black Ski Inc, PO Box 90762, Washington, DC 20090-0762

7/30/12

ADVANCED PLANNING MEETINGS

1ST MONDAY OF EACH MONTH @ 7 PM
TURNER MEMORIAL AME CHURCH

7201 16TH PLACE, HYATTSVILLE, MD

Next Meetings
Feb. 4 & Mar. 4

Contact Vicki McGill
for more information

202.526.6246

advanceplanning@blackskiinc.org

Trip Directors needed.

Training Available

Now is a great time to GET INVOLVED!

ADVERTISE YOUR SERVICES IN HOT WAX

HOT WAX is distributed monthly to 800 Black Ski members located throughout the DC Metropolitan Area and beyond. By advertising your products and services, you can effectively reach a select and dynamic group of civic-minded professionals with a variety of sporting and social interests.

ADVERTISING RATES

Full Page

8 1/2 X 11

\$50.00 per issue

\$270.00 six issues

1/4 Page

4 1/4 X 5 1/2

\$20.00 per issue

\$110.00 six issues

Half Page

8 1/2 X 5 1/2

\$35.00 per issue

\$190.00 six issues

1/8 Page

2 1/4 X 4 1/8

\$15.00 per issue

\$80.00 six issues

***Deadline for Ad Submission is the 15th of each month
for inclusion in the following month's Hot Wax***

For details contact:

Darlene Bing, VP Communications
communications@blackskiinc.org *email*
202.262.6424 *telephone*



BLACK SKI INC.
MONTHLY

Membership
Happy Hours
ARE BACK!



Join Us at

CAROLINA KITCHEN BAR & GRILL
6501 America Blvd, Hyattsville, MD

(Right Next to The Mall at Prince Georges &
The Prince Georges Plaza Metro Stop)

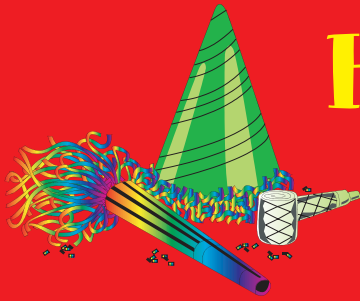
3rd Wednesday of Each Month

6 PM - Until

Comes Out
Mingles & Have Fun!!!

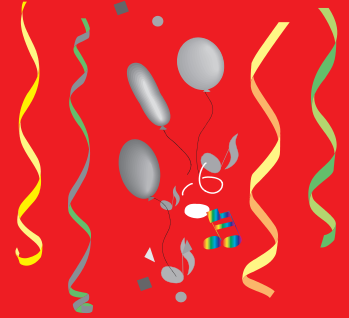
FREE APPETIZERS & DRINK SPECIALS!!!

www.blackskiinc.org



Happy Birthday

January Birthdays!



Gregory Askew
Dina Bailey
Richard Banks
Odell Bartlett
Harry Bass
Robert Beavers
Josephine Beavers
Sharon Bennett
Floyd Boyd
Mary Broadway
Janice Brogdon
Jacqueline Brooks
Richard Brown
Billy Brown
Eric Brown
Lyn Campbell
Anna Chin
Audrey Cobb
Maureen Cooper
Brendus Cottren

Daniel Curtis
Shirley Ford
Consandra Fox
John Gambrill
Mallory Glenn
Cynthia Griffith
Maureen Hanley
Robin Harcum
Denise Harrid-Goodson
Tracy Harris-Kelton
Allison Holmes
L. Hughes
Alice James
Lee James
Norma Johnson
P. Yvonne Jones
Tanya Jones
Carrie Jordan
Spencer Kelton
Christian Kennedy

Jeanne Lockman
Gregory Lockman
David Lottier
Yvonne Mapily
Larry Marshall
Michelle McLean
Lindsay McQuater
Joe Nabinett
Marilyn Pounds
Brian Robinson
Regina Saizan
Sylvester Smith
Otis Sprow
Edwina Thompson
Roslyn Thompson
Myles Turner
DeVance Walker
Harvey Westbrook
Monique Williams
Eddie Witten

Black Ski Inc., Trip Payment Form



Anyone attending a trip that runs a weekend or longer must be a club member. Please use one form for each trip you are paying for as each sheet will be forwarded to the trip director. We cannot duplicate the information you provide as trip directors do not see your check. Each payment should be accompanied by a trip payment form.

Trip Name _____ **Trip Date** _____ **Amount Enclosed \$** _____

Indicate Ski Package _____ **Lessons?** Yes ☐ No ☐ **Rentals?** Yes ☐ No ☐

Your Legal Name _____ **M/F** _____ **Birth Month/Day/Year** ____/____/____ (TSA Requirement))

Note: **Airline tickets will be issued in the name you use. Please be consistent** Airfare Charge option? ☐ Yes ☐ No

Address _____ **City** _____ **State** _____ **Zip** _____

Telephone _____ **Home** _____ **Work BSI Member No.** _____ **E-mail** _____

Please check all that apply: Air Option? ☐ Yes ☐ No Departing Airport ☐ BWI ☐ Dulles ☐ National

Ground Transfers? ☐ Yes ☐ No Accommodations ☐ Hotel Single/Double ☐ 2 Bedroom ☐ 3 Bedroom Condo

Roommate _____ **Condo Mates** _____

Lift Tickets 3 days ☐ 4 ☐ 5 ☐ 6 ☐ **Do you mind opposite sex condo mates?** ☐ Yes ☐ No

Children? ☐ Yes ☐ No **Is your child:** ☐ Under 5yrs ☐ 6 - 15 yrs ☐ 16 - 18 yrs

Emergency Contact Name _____ **Telephone ()** _____

Mail this form with your payment to: Black Ski, Inc., P.O. Box 90762, Washington, D.C. 20090-0762

BLACK SKI, INC. TERMS & CONDITIONS STATEMENT



WASHINGTON D.C.

Effective 9/1/00 Anyone going on a weekend or longer trip must be a club member.

An initial deposit per person is required to confirm your reservation. A non-refundable deposit fee of up to \$250 will be assessed if cancellation is received after date specified on trip flyer.

PAYMENTS

The payment schedule outlined on trip flyer must be adhered to unless arrangements are made with the Trip Directors. Failure to receive payment by date specified may cause loss of reservation (see cancellation for non-payment below). Monies received within thirty (30) days of the trip date will only be accepted in the form of a money order, certified check or cashier's check. No cash or personal check transactions will be accepted.

CANCELLATION

(a) Request for cancellation: A request to cancel from a trip must be in writing and directed to the Trip Director. The participant by voluntarily requesting to be canceled from the trip will be assessed the non-refundable deposit fee (as specified on trip flyer) plus any payments that have been made to vendors on his/her behalf. (b) Cancellation for non-payment: The participant is required to adhere to the trip's published payment schedule. If adherence is to the contrary, you will be notified in writing after you have missed two consecutive scheduled payments. The participant will be allowed fifteen (15) days to bring his/her scheduled payment plan up-to-date. If payment is not received after notification, all monies may be returned to the participant minus the nonrefundable deposit fee plus any payments that have been made to the vendors on his/her behalf.

REFUNDS AND TRANSFERS

Black Ski Inc. will make all attempts to refund participants whenever possible. Refunds will be made only after suitable replacements are found. Participant transferring funds from one trip to another must do so in writing and have authorization from both trip directors.

TRIP INSURANCE

The purchase of trip cancellation/interruption insurance is recommended and is usually available for a nominal fee.

ROOM ASSIGNMENT

Black Ski will attempt to honor all requests but reserves the right to make changes.

SKIER'S RESPONSIBILITY CODE

1. Always stay in control and be able to stop or avoid other people or objects.
2. People ahead of you have the right of way. It is your responsibility to avoid them.
3. You must not stop where you obstruct a trail or are not visible from above.
4. Whenever starting downhill or merging into a trail, look up hill and yield to others.
5. Always use devices to help prevent runaway equipment.
6. Observe all posted signs and warnings. Keep off closed trails and out of closed areas.
7. Prior to using any lift, you must have the knowledge & ability to load, ride and unload safely.

Black Ski, Inc. is not liable for irregularities, loss, injury or damages to persons and/or property during the trip. The participant accepts that there are risks inherent in skiing and adventure activities and hereby releases Black Ski, Inc. from any and all liabilities.

I accept, acknowledge and understand the Terms & Conditions Statement stated above.

Signature_____ Date_____

MEMBERSHIP APPLICATION/RENEWAL/INFORMATION UPDATE FORM



BLACK SKI, MORE THAN JUST A SKI CLUB

Please Print

First _____ Middle Initial _____ Last _____

Address _____

City _____ State _____ Zip Code _____ E-Mail Address _____

Telephone Number _____ Home _____ Work _____

Date of Birth _____ Member Number _____

Spouse First _____ Middle Initial _____ Last _____

Date of Birth _____ Member Number _____

Child Name _____ Date of Birth _____

Child Name _____ Date of Birth _____

New Members		Annual Renewal Rates		Lifetime Membership
<input type="checkbox"/> Individual	\$55	<input type="checkbox"/> Individual	\$30	<input type="checkbox"/> \$500 Flat Rate
<input type="checkbox"/> Family	\$90	<input type="checkbox"/> Family*	\$45	
<input type="checkbox"/> Youth	\$15	<input type="checkbox"/> Youth	\$10	

** Family Includes parent(s) & children 7 - 18, No charge for children under 7 yrs. if a parent is a member*

☐ Conversion from Individual to Family \$55

Renewal after more than 18 months lapse - Individual \$40 Family \$55

Consider making a generous donation to our Youth Program \$ _____

By joining Black Ski, Inc., as a member, I hereby release Black Ski, Inc., its officers, directors, employees, leaders and volunteers from any liability, damages or claims arising from injury or property damage sustained by me related to any Black Ski, Inc. activity or event. Total Fee Enclosed \$ _____

I give permission for my name to be submitted to NBS sponsor list. Yes ☐ No ☐

I would like to receive the *Hot Wax* Newsletter and other Black Ski notices via ☐ Email ☐ US Mail

Signature (*Not Valid Unless Signed*) _____ Date _____

Sponsor's Name _____ Date _____

Sponsor gets \$5.00 certificate for use on Black Ski activities for each new Lifetime, Individual or Family membership.

Indicate the Committee on which you would like to participate by checking the appropriate box(es)

☐ Advance Planning ☐ Youth ☐ Communications ☐ Fund Raising ☐ Business/Computer Support
☐ Hospitality ☐ Budget & Finance ☐ Membership ☐ Other (Specify) _____

Be sure you've completed the form properly and have included the total amount due.

Send check or money order to:

Membership Application/Renewal, Black Ski, Inc., P.O. Box 90762, Washington, D. C. 20090-0762

Black Ski, Inc. Executive Committee

President	Vicki McGill	202.526.6246	president@blackskiinc.org
Secretary	Alisa Dotson	301.438.0726	secretary@blackskiinc.org
Advanced Planning	<i>Vacant</i>		advanceplanning@blackskiinc.org
Administrative Support	Tammy Madison	443.949.5056	adminsupt@blackskiinc.org
Finance	Regina Saizan	301.297.7434	finance@blackskiinc.org
Fund Raising	Valerie Peters	301.221.0212	fundraising@blackskiinc.org
Hospitality	Vera Johnson	301.482.1038	hospitality@blackskiinc.org
Membership	Beverly Fields	202.271.2460	membership@blackskiinc.org
Racing	Debbie Davis	301.345.2280	racing@blackskiinc.org
Communications	Darlene Bing	202.262.6424	communications@blackskiinc.org
Youth	Beverly Johnson Broady	301.249.5955	youth@blackskiinc.org

Board of Directors

Russell Bacon
Betty "BJ" Jones
Lenny Milner*

Lowell Blagmon
Kathy Lambert, Secretary
Ken Moris, Chairman
Bill Wyatt

Larry Coleman
Vicki McGill
Rod Quick

Furman Marshall*

Mickey Diggs* (Deceased)

Donny Claytor*

Ray Mott* (Deceased)

Jim Thorne*

* denotes Founding Members

- ***Italics*** denotes Inactive Members

Communications Team

Karlyn Walker, Communications Coordinator
Vicki McGill, Layout & Design



Black Ski, Inc.

P.O. Box 90762

Washington, D.C. 20090-0762

Address Correction/Forwarding Service Requested

HOT WAX - The Official Publication of Black Ski, Inc

www.blackskiinc.org • www.blackskiinc.net • www.blackskiinc.com • 301.231.3900

Yahoo Group: <http://sports.groups.yahoo.com/group/blackskiinc/>