



black ski Inc.
WASHINGTON D.C.

HOT WAY

Vol. 42 No. 2

The Official Publication of Black Ski Inc.

February 2014

Black Ski - We are a family?

A 20+ year club member recently mentioned to me that "Black Ski used to be a family and we have gotten away from that." She went on to talk about a time when everyone would take time to speak to each other and fellowship at all of our events – no matter who you were all felt welcomed.

As I am entering my 11th year of Black Ski membership, I can't say that I have ever had that family experience - yet my experience has been a lot more positive than many of my contemporaries who are in their 40s and younger. I have often attributed me being spared my peers' experiences to having coming in the door as a volunteer and working in many different capacities before eventually being elected president... BUT of course that should not be what it takes to receive a warm and friendly reception.

During last year's Picnic a long time member came to me and asked who I was after seeing me interacting with and speaking to most in attendance and I shared with her that I was the club president. She then shared how she had been a member for many years, having attended several club events and just not feeling welcome because no one really seemed to want to socialize with anyone with whom they were not already acquainted and this seemed so strange to her as we are all African Americans - no one person better than any other - yet many seemed very "cliquish."

Most recently the chilly reception was brought to my attention on the Park City trip where some of the younger and newer members made efforts to speak to and fellowship with

some of our more seasoned members and their efforts weren't well received. This has also been the case on many mountains where many members only ski with those they know as opposed to branching out and hitting trails with members who they've never seen on a trip.

Frequently, I have heard about there being the lack of a warm, fuzzy feeling at club meetings which at one point led us to try starting meetings with "ice breakers" that would encourage everyone to get up out of their seats and connect with many others in the room - especially those who they didn't already know. Since becoming president I have planned more social meetings at the 201 Bar on Capital Hill to encourage members to come out in a very social atmosphere and mix and mingle with everyone in attendance. Our social meetings have been successful, we just need more members to come out to fellowship and enjoy them. **Our next social meeting is planned for February 25, 2014.**

This year I ask **EVERYONE** to reach out to members you don't know - on trips, at meetings and at other club events and make the effort to make all feel welcome. After all we all love the same winter sports. We are 42 years strong and if WE don't take the time to embrace our newer and younger members NOW and leave them feeling alienated, as a club run by volunteers, there will be no one willing to step up to lead our club into the future and keep it going eventually leading to its demise like many other NBS clubs and organizations of the past.

Thank You - Vicki McGill, Black Ski President

CONDOLENCES

The Board of Directors, Executive Committee and Members of Black Ski Inc. would like to express condolences to Vera Johnson and her family on the recent passing of her mother Faye Yvonne Lee Christian and to Lowell Blagmon and his family on the passing of his sister Joyce Lee.

General Body Meetings

February 25, 2014

201 Bar - 201 Massachusetts Ave NE, Wash DC

Contact membership@blackskiinc.org

March 25, 2014

19th Street Baptist Church,

4606 16th Street, N.W., Wash., D.C.

General Body Meetings are held the fourth Tuesday of each month

What's Inside:

Upcoming Black Ski Events	2 , 5
Racer's Corner	3
Black Ski Elections Information	4
Sundance @ Park City Trip Photos	6 - 7
February Birthdays	9
BSI Forms	9 - 11

Visit www.blackskiinc.org/documents.html for our Bylaws and Members Bill of Rights

Black Ski Event Calendar

Dates	Event	Location	Trip Directors/POC	Contact Number
February 2014				
6/9	Day Trip with REI @ Columbia MD	REI & Liberty Mountain	Terry Anderson	(862) 668-1443
20/9	Day Trip with REI @ Tyson's Corner	REI & Liberty Mountain	Terry Anderson	(862) 668-1443
8 - 15	Black Ski at Whistler	Whistler Blackcomb	Michelle McLean	(240) 461-1515
	A Summit Alternative	British Columbia	Darlene Bing	(202) 583-4504
25	BSI General Body Meeting	201 Bar - 201 Mass Ave NE DC	membership@blackskiinc.org	
March 2014				
15 - 22	Black Ski Spring Fling	Big Sky Ski Resort	Tanya Jones	(301) 680-8921
		Big Sky, Montana	Mike Saizan	(301) 297-7434
25	BSI General Body Meeting	19th St. Baptist Church	membership@blackskiinc.org	
April				
22	BSI General Body Meeting & Election	19th St. Baptist Church	membership@blackskiinc.org	
May				
25	BSI Annual Cookout	Rock Creek Park, Lot 1	Vera Johnson	(301) 482-1038
27	BSI General Body Meeting	19th St. Baptist Church	membership@blackskiinc.org	
June				
24	BSI General Body Meeting	19th St. Baptist Church	membership@blackskiinc.org	
July				
13	BSI Annual Crab Feast	Sandy Point State Park	crabfeast@blackskiinc.org	

Visit www.blackskiinc.org for the latest updates on our event schedule

Special February General Body Meeting Location



February 25, 2014 - 7 pm
@ The 201 Bar
201 Massachusetts Avenue NE,
Washington DC

**Come out and Socialize with Club
Members - Trip Directors & Officers**

Located on Capitol Hill...Metro Accessible
...Just down the street from Union Station
Parking available throughout the area

The Racer's Corner

Upcoming Events:

- 1-2 February 2014 – Regional NASTAR Championships at Okemo, Vermont
- 25-30 March 2014 – National NASTAR Championships at Snowmass, Colorado

Racer Profile: Mike Lanier



What is your nickname? Geronimo

What is your favorite mountain? Snowmass in Aspen, Colorado
How long have you been skiing? 43 years

What year did you ski the most and how many days on snow was it? Skied 133 days during the 1990 ski season.

What brand, model, and length ski do you race on? Slalom: Atomic Beta Race 160cm, Giant Slalom: Atomic GS-12 183cm, Super Giant Slalom: Atomic Race SG 210cm, Downhill: Atomic Arc Module Bionic RS 215cm.

What was your best race finish? 2nd place Slalom at the 1990 United States Ski Association Western Region Masters Championships in Sun Valley, Idaho.

What has been your most memorable race experience? Racing against the legendary Franz Weber in masters competition, speed skiing with CJ Mueller, and race training with the Mahre Brothers.

Which NBS Summit/AMCC did you enjoy the most, and why? Lake Placid, New York in 1987. My son Sequoyah, father Arnold and I spent the entire week skiing, racing and partying together. The week long non-stop party by The Gang at the San Moritz hotel was the topper.



What little known fact about yourself would you like to share?
First African-American to be certified Level 2 by the United States Ski Coaches Association.

Fact Check:

How often should I wax and tune my equipment?

How often you ski and race will determine on how often you wax and tune your equipment. Depending on your budget you can have your equipment waxed on a daily basis. It is a good practice to wax them every 3-5 ski days and before any race. Sharpening the edges and grinding the base down should be done less frequently or as needed. Sharpening the edges and repairing the base of the ski will have a significant impact on your performance. Take the time to inspect your skis at the end of each day. If damaged, an overnight base repair will do wonders the next day when you are back on the snow. Purchase a diamond stone and keep it in your pocket. This small stone laced with diamonds should be used to smooth out any minor nicks and abrasions in your edges. You want a smooth cutting edge to maximize your control.

For best performance you want a thin layer of wax on a structured ski. Structuring ski is when small grooves are put into the base before waxing to reduce the cohesion forces. For most of us a general structure is adequate, but for the more serious racer the equipment will be custom structured for the weather and snow conditions for that particular day, race or even a run. There are numerous types and brands of waxes. The more expensive waxes will have additive components to help reduce the friction under certain conditions. If the race course is relatively flat in certain sections, the proper wax will have a greater impact on equipment performance then if the race course was on a steeper grade. On a steep race course you are on your edge more versus a flat race course where you are riding your skis flatter.

The majority of us take our equipment to a shop for a tune and wax infrequently. As racers you want to spend the extra time and money to get a high performance sport tune more often.

NASTAR Racing:

Everyone is encouraged to get out and race NASTAR locally or anywhere in the country where it is offered. Your first race is on us. Every Black Ski member in good standing will be reimbursed \$10 for their first NASTAR race this season. Make sure to register your club team as "Black Ski". Go to www.nastar.com for more information. Following is a list of local venues to race NASTAR:

Maryland – Wisp, Virginia – Bryce, Massanutten, Wintergreen, West Virginia – Snowshoe, Timberline, and Pennsylvania – Roundtop, Seven Springs

Go Fast – Be Safe,

Mike "Geronimo" Lanier, VP Adult Racing

Cell: (404) 275-0888 • Email: racing@blackskiinc.org

2014 Black Ski Elections Are Coming April 22, 2014

Are you interested in making a difference in YOUR ski club? Do you have leadership experience? Are you gifted in the area of administration? A Black Ski Executive Committee or Board of Directors position maybe for you!

Elected positions serve 2 years unless otherwise specified. All Vice Presidents are to have a committee. VPs should appoint an assistant to help coordinate committee activities and attend meetings in the VP's absence. The positions up for election this year are on both the Executive Committee and the Board of Directors and their primary Roles and Responsibilities are as follows:

President – Presides over General Membership (Body) and Executive Committee meetings. Administers all business of Black Ski as provided for by the bylaws. Coordinates the activities of the VPs. Acts as the liaison between the general membership and the Board of Directors. Serves as a link between the NBS and Black Ski, Inc. Authorizes the disbursement of funds as outlined by the bylaws.

Secretary – Writes and prepares all executive committee and general membership meeting minutes. Makes copies of all minutes of previous meetings available to the general membership. Handles any correspondence necessary for the executive committee.

VP, Adult Racing – Coordinates all racing activities. Establishes racing teams and programs. Promotes and generates enthusiasm for racing among club members. Recruits racers for regional and national events. Coordinates annual race awards ceremony.

VP, Fundraising – Plans and implements activities and the sale of goods that will assist the club in meeting its financial obligations; researches, negotiates, purchases, inventories, and maintains club fundraising merchandise.

VP, Hospitality

Extends greetings and fellowship to all members and guests of the club at all activities and club events. Coordinates club parties and annual picnic.

VP, Youth – Promotes activities among youth up to and including 18 years old. Establishes a development program for youth.

ONE YEAR TERM - OUT OF CYCLE POSITIONS

VP, Advance Planning – Coordinates the planning of winter and summer club trips and most club activities. Must enjoy leading a group and work well with people and have past Black Ski Inc. trip planning experience. Specific duties include: Training and developing Trip Leaders and assistant Trip Leaders. Conducts Trip Leader and Intro Skiers Seminars. Chairs monthly Advance Planning Committee meetings. Develops and maintains a schedule of ski trips, other club events and maintains club Web calendar. Appoints Trip Directors and event chairpersons. Negotiates and signs contracts. Attends cycling planning meetings. Provides information for the HOT WAX newsletter, website and Hotline. Represents the club at ski expos, happy hours, etc.

VP, Communications – Responsible for public relations for the club and the management and production of the club newsletter, website and Hotline information. Specific duties include collecting and receiving articles for the HOT WAX newsletter by the 16th of each month. Preparing, editing and sending the HOT WAX to the printer. Picking up the HOT WAX from the printer and distributes to the membership by the 1st of the month. Maintenance of the Black Ski website and social media accounts. Updates the Black Ski Hot Line. Responsible for Public Relations for the club.

VP, Finance (Treasurer) – Responsible for the disbursement of checks and the maintenance of the financial accounts and records. Specific duties include: Recording and depositing all payments and expenses by project account using club designated PC financial software. Preparing monthly reports on all bank accounts. Recording and maintaining financial transactions both electronically and hard copy. Providing monthly financial status reports to Trip Directors. Assists the President in developing the annual budget. Preparing monthly year to date financial tracking reports for the Executive Committee and Board of Directors. Provides assessment of the club's financial condition at monthly Executive Committee meetings. Preparing necessary records and works with the designated accountant in the preparation of federal, state and local taxes within 45 days of the close of the tax year. Become versed with the IRS 501c7 guidelines.

VP, Membership – Responsible for maintaining the club's database, providing membership support, and soliciting and recruiting new members through such avenues as membership drives and happy hours. Specific duties include: Maintaining and updating the Black Ski Membership database. Preparing Membership reports/census. Distributing information to prospective members. Processing membership applications and renewals. Distributing welcome packets and membership cards. Preparing and distributing renewal and expiration notices. Preparing mailing list for the Hot Wax newsletter. Coordinating Membership Drive Happy Hours.

There are also **3 Board of Directors** positions up for election. Board Member – Establishes policies to conduct the business of Black Ski Inc.

Qualifications for Executive Committee positions:

- Two consecutive years of full membership in Black Ski
- At least 18 years of age

Qualifications for the Board of Directors:

- Full membership in Black Ski for a minimum of three consecutive years.
- Administrative, business or organizational service/ experience in Black Ski for a minimum of one year.
- At least 18 years of age.
- Is not holding another elected position in Black Ski.

Nominations are now being accepted. Nominations must be submitted in writing to Aaro Jean Bell-Reid, Nominations Committee Chairperson, by February 18, 2014. Nominations may be mailed to the Black Ski Post Office Box or emailed to nominations@blackskiinc.org.

BIG SKY RESORT – THE BIGGEST SKIING IN NORTH AMERICA!



Spring Fling 2014 @ Big Sky, Montana

Saturdays, March 15 – March 22, 2014

Package Price: \$1,782 - \$1,976

Trip Includes (Additional Costs: Airline Baggage Fees and Possible Airline Fuel Surcharges)

- Round trip air to Bozeman, MT Airport - from BWI or DCA-National via Delta
- Ground transportation to/from Bozeman Airport to the Big Sky - a one hour drive
- Five-day Lift Ticket includes 4-day ticket for Big Sky and 1-day lift ticket for Moonlight Basin
- Welcome Party & Private Black Ski Dinner

Lodging Option 1 - 7-nights lodging at the Luxurious Summit at Big Ski Hotel - **\$1976**

A Ski-in/Ski-out location in the heart of everything

- » An elegant Euro-Western style property with one King or two Queen beds
- » Includes a full daily breakfast, Private fitness center and outdoor hot tubs

Lodging Option 2 - Seven nights lodging at the Big Horn Condo – *limited availability* - short walk to puma lift (Breakfast NOT included) – **\$1782**

Lodging Option 3 – Seven nights at the Huntley Lodge - **\$1891** – *limited availability*

- » A standard hotel rooms with 2 Queen beds, includes a full daily breakfast

Optional Items:

- » 6-day lift ticket +\$54; 4-day lift ticket -\$20; (Sorry, no senior rates)
- » Upgrade Big Sky lift ticket to a two mountain lift ticket (Big Sky and Moonlight) +\$26 per day, on-site

Contact: Trip Director Tanya Jones H-301-680-8926 - Tanyalj20904@yahoo.com

Assistant Trip Director Mike Saizan H-301-297-7434 – C-301-785-2964 – bsi.atd@verizon.net

Sign Up Online: www.blackskiinc.org/springfling.html



Moonlight Basin

Mountain Stats

5,532 Skiable Acres

4,350 Vertical Drop

Over 220 Runs

Longest Run Six Mile

- 3632 skiable acres at Big Sky; 1900 skiable acres at Moonlight Basin Resort
- Expansive terrain for all levels; uncrowded, wide-open spaces
- Free guided mountain tours daily
- Guided Zip Line Tours, Snowshoeing and Snowmobiling available (extra cost)
- Basecamp to Yellowstone National Park

A full service resort with all the amenities you could ask for!

Payment Schedule

July 23, 2013	\$250 Deposit*	October 22, 2013	\$300	January 25, 2014	Balance Due
August 27, 2013	\$300	November 26, 2013	\$300	*Non-refundable after Sept 1, 2013	
September 24, 2013	\$300	December 17, 2013	\$300		

Please complete and submit with your trip payment form. **NOTE: Anyone attending a trip that runs a weekend or longer must be a club member.**

Black Ski Spring Fling at Big Sky

March 15- 22, 2014

Amount Enclosed \$ _____

Your Legal Name _____ **M/F** _____ **Birth Month/Day/Year** ____/____/____ (TSA Requirement)

Address _____ **City** _____ **State** _____ **Zip** _____

Telephone _____ **Home** _____ **Cell** _____ **BSI Member No.** _____ **E-mail** _____

Please check all that apply: **Air Seat from BWI?** ☐ Yes ☐ No **Air Seat from DCA?** ☐ Yes ☐ No ☐ No Air Seat (-\$658)

Ground Transfers? ☐ Yes ☐ No **Lift Ticket Days** ☐ 4 (-\$20) ☐ 5 ☐ 6 (+\$54) ☐ No Lift Ticket (-\$276) **Trip Insurance?** ☐ Yes ☐ No

Accommodations: The Summit Hotel ☐ Deluxe Studio ☐ 1 Bedroom Suite ☐ 2 Bedroom Suite

Double Room - Double Occupancy ☐ 2 Queen Beds or ☐ 1 King Bed (\$1976/person – standard package)

Private Room - Double Occupancy ☐ 2 Queen Beds or ☐ 1 King Bed (Single Occupancy add \$804)

Big Horn Condo - Quad Occupancy ☐ 2 bedroom – (\$1782/person) for four - Must consult with Trip Direction for this arrangement

Huntley Hotel ☐ Standard Room - 2 Queen Beds – (\$189/person) - Must consult with Trip Director for this arrangement

Roommate/Condo Mates _____

Do you mind opposite gender roommates? ☐ Yes ☐ No **Children?** ☐ Yes ☐ No

Emergency Contact Name _____ **Telephone** (____) _____

☐ **I Agree to the Black Ski's Terms and Conditions**

Mail this form with your payment to: Black Ski, Inc., P.O. Box 90762, Washington, D.C. 20090-0762



PARK CITY
MOUNTAIN RESORT

Sundance Film Festival
January
Ski by Day • Enjoy the


CANYONS
PARK CITY, UTAH
2013-14
SEASON

EGYPTIAN

SUNDANCE
FILM FESTIVAL

SUNDANCE
FILM FESTIVAL



Festival 2014 - Park City, Utah 18 - 25, 2014 Film Festival Every Night!



ADVANCED PLANNING MEETINGS

**1ST MONDAY OF EACH MONTH @ 7 PM
TURNER MEMORIAL AME CHURCH**

7201 16TH PLACE, HYATTSVILLE, MD

***Next Meeting
March 3 & April 7***

**Contact Vicki McGill
for more information**

202.526.6246

advanceplanning@blackskiinc.org

Trip Directors needed.

Training Available

Now is a great time to GET INVOLVED!

Get It While It's Hot!

***Get Hot Wax Delivered to you via
email before it hits the streets!***

By getting **HOT WAX** delivered to your email box

You get the latest news even earlier

You get the full effect of the color layout,

and best of all

You'll be able to save the full color

PDF version for future reference.

To get ***e-HOT WAX***

Email newsletter@blackskiinc.org

Include your name, email address and membership number

DO IT TODAY!

Note: You'll need Adobe Acrobat Reader to open the document.

You can download the software-free of charge-
by visiting www.adobe.com.

ADVERTISE YOUR SERVICES IN HOT WAX

HOT WAX is distributed monthly to 700 Black Ski members located throughout the DC Metropolitan Area and beyond. By advertising your products and services, you can effectively reach a select and dynamic group of civic-minded professionals with a variety of sporting and social interests.

ADVERTISING RATES

Full Page	Half Page	1/4 Page	1/8 Page
8 1/2 X 11	8 1/2 X 5 1/2	4 1/4 X 5 1/2	2 1/4 X 4 1/8
\$50.00 per issue	\$35.00 per issue	\$20.00 per issue	\$15.00 per issue
\$270.00 six issues	\$190.00 six issues	\$110.00 six issues	\$80.00 six issues

***Deadline for Ad Submission is the 15th of each month for
inclusion in the following month's Hot Wax***

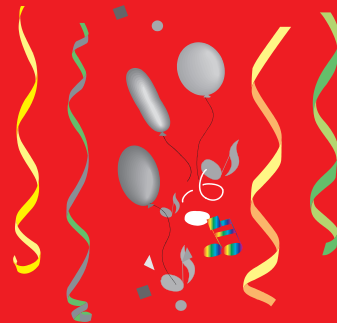
For details contact:

email communications@blackskiinc.org



Happy Birthday

February Birthdays!



Cynthia Alston
Russell Bacon
Darlene Bing
Tikia Bonner
Sylvester Booker
Clemia Brittenum
McKinley Bryant
MacKenzie Campbell
Phyllis Campbell
Thomas Campbell
Jaden Carnegie
Gary Carson
Michelle Carter
Desiree Cooper
Malia Daughtry
Roland Dotson

George Ector
Brenda Ethridge
John Ficklin
Robert Fitzgerald
George Gibson
Brooke Givens
Robert Hagans
Alan Hairston
Patricia Harrison
Charles Harwood
Sondra Henderson
Sabrina Hines
Eric Hooper
Cliff Hubbard
Patricia Hull
Jarrett Jackson

Marcia Jones
Betty Jones
Cameron Lee
Keith Lucas
Lorna Matthews
Sylvia Medley
Dorothy Miller
Connie Mills
Benjamin Moore
Alonzo Neal
Juanita Newell
Prisca Ngoma
Brandon Owens
Ronald Payne
Aaron Penn
Agnes Powell

Aisha Quarles
Dainer Robinson
Shawne Rodgers
Angela Satterthwaite
Roger Thomas
E Mark Toliver
Angela Truly
Sharon Walton
Yurell Washington
Doris Washington
Sherman White
Loretta Williams
Jane Williams
Robin Williamson
Reginald Wilson

Black Ski Inc., Trip Payment Form



Anyone attending a trip that runs a weekend or longer must be a club member. Please use one form for each trip you are paying for as each sheet will be forwarded to the trip director. We cannot duplicate the information you provide as trip directors do not see your check. Each payment should be accompanied by a trip payment form.

Trip Name _____ **Trip Date** _____ **Amount Enclosed \$** _____

Indicate Ski Package _____ **Lessons?** Yes ☐ No ☐ **Rentals?** Yes ☐ No ☐

Your Legal Name _____ **M/F** _____ **Birth Month/Day/Year** ____/____/____ (TSA Requirement))

Note: **Airline tickets will be issued in the name you use. Please be consistent** Airfare Charge option? ☐ Yes ☐ No

Address _____ **City** _____ **State** _____ **Zip** _____

Telephone _____ **Home** _____ **Work BSI Member No.** _____ **E-mail** _____

Please check all that apply: Air Option? ☐ Yes ☐ No Departing Airport ☐ BWI ☐ Dulles ☐ National

Ground Transfers? ☐ Yes ☐ No Accommodations ☐ Hotel Single/Double ☐ 2 Bedroom ☐ 3 Bedroom Condo

Roommate _____ **Condo Mates** _____

Lift Tickets 3 days ☐ 4 ☐ 5 ☐ 6 ☐ **Do you mind opposite sex condo mates?** ☐ Yes ☐ No

Children? ☐ Yes ☐ No **Is your child:** ☐ Under 5yrs ☐ 6 - 15 yrs ☐ 16 - 18 yrs

Emergency Contact Name _____ **Telephone ()** _____

Mail this form with your payment to: Black Ski, Inc., P.O. Box 90762, Washington, D.C. 20090-0762

BLACK SKI, INC. TERMS & CONDITIONS STATEMENT



Effective 9/1/00 Anyone going on a weekend or longer trip must be a club member.

An initial deposit per person is required to confirm your reservation. A non-refundable deposit fee of up to \$250 will be assessed if cancellation is received after date specified on trip flyer.

PAYMENTS

The payment schedule outlined on trip flyer must be adhered to unless arrangements are made with the Trip Directors. Failure to receive payment by date specified may cause loss of reservation (see cancellation for non-payment below). Monies received within thirty (30) days of the trip date will only be accepted in the form of a money order, certified check or cashier's check. No cash or personal check transactions will be accepted.

CANCELLATION

(a) Request for cancellation: A request to cancel from a trip must be in writing and directed to the Trip Director. The participant by voluntarily requesting to be canceled from the trip will be assessed the non-refundable deposit fee (as specified on trip flyer) plus any payments that have been made to vendors on his/her behalf. (b) Cancellation for non-payment: The participant is required to adhere to the trip's published payment schedule. If adherence is to the contrary, you will be notified in writing after you have missed two consecutive scheduled payments. The participant will be allowed fifteen (15) days to bring his/her scheduled payment plan up-to-date. If payment is not received after notification, all monies may be returned to the participant minus the nonrefundable deposit fee plus any payments that have been made to the vendors on his/her behalf.

REFUNDS AND TRANSFERS

Black Ski Inc. will make all attempts to refund participants whenever possible. Refunds will be made only after suitable replacements are found. Participant transferring funds from one trip to another must do so in writing and have authorization from both trip directors.

TRIP INSURANCE

The purchase of trip cancellation/interruption insurance is recommended and is usually available for a nominal fee.

ROOM ASSIGNMENT

Black Ski will attempt to honor all requests but reserves the right to make changes.

SKIER'S RESPONSIBILITY CODE

1. Always stay in control and be able to stop or avoid other people or objects.
2. People ahead of you have the right of way. It is your responsibility to avoid them.
3. You must not stop where you obstruct a trail or are not visible from above.
4. Whenever starting downhill or merging into a trail, look up hill and yield to others.
5. Always use devices to help prevent runaway equipment.
6. Observe all posted signs and warnings. Keep off closed trails and out of closed areas.
7. Prior to using any lift, you must have the knowledge & ability to load, ride and unload safely.

Black Ski, Inc. is not liable for irregularities, loss, injury or damages to persons and/or property during the trip. The participant accepts that there are risks inherent in skiing and adventure activities and hereby releases Black Ski, Inc. from any and all liabilities.

I accept, acknowledge and understand the Terms & Conditions Statement stated above.

Signature_____ Date_____

MEMBERSHIP APPLICATION/RENEWAL/INFORMATION UPDATE FORM



BLACK SKI, MORE THAN JUST A SKI CLUB

Please Print

First _____ Middle Initial _____ Last _____

Address _____

City _____ State _____ Zip Code _____ E-Mail Address _____

Telephone Number _____ Home _____ Work _____

Date of Birth _____ M/F _____ Member Number _____

Spouse First _____ Middle Initial _____ Last _____

Date of Birth _____ Member Number _____

Child Name _____ Date of Birth _____

Child Name _____ Date of Birth _____

New Members

- ☐ Individual \$55
☐ Family \$90
☐ Youth \$10

Annual Renewal Rates

- ☐ Individual \$30
☐ Family* \$45
☐ Youth \$10

Lifetime Membership

- ☐ \$500 Flat Rate

** Family Includes parent(s) & children 7 - 18, No charge for children under 7 yrs. if a parent is a member*

☐ Conversion from Individual to Family \$55

Renewal after more than 18 months lapse - Individual \$40 Family \$55

Consider making a generous donation to our Youth Program \$ _____

By joining Black Ski, Inc., as a member, I hereby release Black Ski, Inc., its officers, directors, employees, leaders and volunteers from any liability, damages or claims arising from injury or property damage sustained by me related to any Black Ski, Inc. activity or event. Total Fee Enclosed \$ _____

I give permission for my name to be submitted to NBS sponsor list. Yes ☐ No ☐

I would like to receive the *Hot Wax* Newsletter and other Black Ski notices via ☐ Email ☐ US Mail

Signature (*Not Valid Unless Signed*) _____ Date _____

Sponsor's Name _____ Date _____

Sponsor gets \$5.00 certificate for use on Black Ski activities for each new Lifetime, Individual or Family membership.

Indicate the Committee on which you would like to participate by checking the appropriate box(es)

- ☐ Advance Planning ☐ Youth ☐ Communications ☐ Fund Raising ☐ Business/Computer Support
☐ Hospitality ☐ Budget & Finance ☐ Membership ☐ Other (Specify) _____

Be sure you've completed the form properly and have included the total amount due.

Send check or money order to:

Membership Application/Renewal, Black Ski, Inc., P.O. Box 90762, Washington, D. C. 20090-0762



Black Ski, Inc.

P.O. Box 90762

Washington, D.C. 20090-0762

Address Correction/Forwarding Service Requested

STD
US POSTAGE PAID
WASHINGTON, DC
PERMIT NO. 884

HOT WAX - The Official Publication of Black Ski, Inc

www.blackskiinc.org • www.blackskiinc.net • www.blackskiinc.com • 301.231.3900

Yahoo Group: <http://sports.groups.yahoo.com/group/blackskiinc/>

Twitter: @blackskiinc **Facebook:** Black Ski Inc.

Black Ski, Inc. Executive Committee

President	Vicki McGill	202.526.6246	president@blackskiinc.org
Secretary	Alisa Dotson	301.438.0726	secretary@blackskiinc.org
Advanced Planning	<i>Vacant</i>		advanceplanning@blackskiinc.org
Administrative Support	Darlene Bing	202.583.4504	adminsupport@blackskiinc.org
Finance	Valerie Payton - Acting	301.221.0212	finance@blackskiinc.org
Fund Raising	Valerie Payton	301.221.0212	fundraising@blackskiinc.org
Hospitality	Vera Johnson	301.902.9403	hospitality@blackskiinc.org
Membership	<i>Vacant</i>		membership@blackskiinc.org
Racing	Michael Lanier	404.275.0888	racing@blackskiinc.org
Communications	<i>Vacant</i>		communications@blackskiinc.org
Youth	Beverly Johnson Broady	301.249.5955	youth@blackskiinc.org

Board of Directors

Russell Bacon
Betty "BJ" Jones
Lenny Milner*

Larry Coleman
Kathy Lambert, Secretary
Ken Moris, Chairman
Alease "Christy" Wright

Ken Ford
Vicki McGill
Kendall White

*Furman Marshall**
Mickey Diggs* (Deceased)

Donny Claytor* (Deceased)
Ray Mott* (Deceased)

*Jim Thorne**
* denotes Founding Members
- *Italics* denotes Inactive Members

Communications Team

Vicki McGill, Layout & Design