

# HOT WAX

Vol. 40 No. 6

The Official Publication of Black Ski Inc.

November 2012

## FROM THE DESK OF THE PRESIDENT

### Happy Thanksgiving

As we have just completed the election season and look forward to the start of our ski season, on behalf of the Black Ski Board of Directors and Executive Committee, I would like to take the time to wish everyone in our Black Ski Family a very happy and blessed Thanksgiving Holiday.

Now is a great time to reach out to family, friends and fellow Black Ski members past and present, who you haven't heard from or seen in a while. Sometimes just knowing that you crossed someone's mind can be a wonderful comfort when you receive a phone call, email, letter or card in the mail.

If the thought of volunteerism has crossed your mind, there are always opportunities to reach out to one or more of the many charitable organizations in your area to lend a helping hand. Just one or more days of service is such a short period of time in our everyday lives but can make such a huge difference in the lives of those in need within our communities.

### Monthly Membership Happy Hours

Remember years ago when we had monthly membership happy hours at the Eclipse and other locations and members would come out, dance and have a great time? Well we are restarting them! Our first one will be **Wednesday, November 21, 2012** at Carolina Kitchen Bar & Grill in Hyattsville, across from The Mall at Prince Georges (aka PG Plaza), the day before Thanksgiving as the next day isn't a work day for most. During the evening there will be a live band, free food, wine tasting, dancing and fellowship with Black Ski members. And if you are in the mood for dinner Carolina Kitchen also has great food. Future happy hours will be the 3rd Wednesday of each month.

### Hauntingly Wonderful Halloween Party

Vera Johnson, Hospitality-VP and the Hospitality Committee hosted a great Halloween Masquerade Ball on October 28, 2012. Attendees donned beautiful masquerade masks, enjoyed a wonderful meal and danced the night away despite the wind and rain from Hurricane Sandy moving throughout the area throughout the night and the next two days.

Next up is our **Christmas Party** at Normandie Farms, December 23, 2012 - the day before Christmas Eve. Many of us won't work that day so come out and celebrate with our Black Ski Family. Tickets are available by Mail, Online and at Club Meetings.

### Black Ski Annual Membership Sale - It's Not Too Late!

With the wonderful success of our current membership sale we have decided to bring back the September sale for the holidays - December 1 - 23, 2012. **SALE Prices....Individual Membership \$40 (not \$55)....Family Membership \$55 (not \$90)....Lifetime Membership \$400...Youth Membership \$10 (not \$15). Know someone whose membership has lapsed? Renew with no lapse fee through December! Renewal Prices Individual \$30....Family \$45...Youth \$10. After December Renewal Lapse Fees Return...DON'T MISS THE SALE!!!**

Sign up and purchase **Black Ski Membership and renewal for yourself or as a gift ONLINE** or by mail. Membership applications and payment are available at [www.blackskiinc.org/membership.html](http://www.blackskiinc.org/membership.html)

—Vicki R. McGill, Black Ski, President

### General Body Meetings

**November 27, 2012**

**Special Date - December 18, 2012**

**19th Street Baptist Church,**

**4606 16th Street, N.W., Wash., D.C.**

**Contact Beverly Fields, VP Membership 202.271.2460**

**General Body Meetings are held the fourth Tuesday of each month**

### What's Inside:

|                           |                |
|---------------------------|----------------|
| Upcoming Black Ski Events | 2 - 3 & 5 - 10 |
| Black Ski Youth           | 4              |
| Membership Sale           | 11 & 15        |
| November Birthdays        | 13             |
| BSI Forms                 | 13-15          |

## Black Ski Event Calendar

| <i>Dates</i>    | <i>Event</i>                                 | <i>Location</i>                            | <i>Trip Directors/POC</i>       | <i>Contact Number</i>            |
|-----------------|--|--|---------------------------------|----------------------------------|
| <b>November</b> |  |  |                                 |                                  |
| 17              | Pre-Thanksgiving Ski/<br>Snowboard Adventure | Liberty Mountain SnowFlex<br>Lynchburg, VA | Vicki McGill<br>Darlene Bing    | (202) 526-6246<br>(202) 262-6424 |
| 21              | BSI Monthly Happy Hour                       | Carolina Kitchen, Hyattsville, MD          | Vicki McGill                    | (202) 526-6246                   |
| 27              | BSI General Body Meeting                     | 19th St. Baptist Church                    | Beverly Fields                  | (202) 271-2460                   |
| <b>December</b> |  |  |                                 |                                  |
| 1 - 8           | Early Season Warm Up 2012                    | Crested Butte Mountain Resort              | Vicki McGill<br>Alisa Dotson    | (202) 526-6246<br>(301) 641-5127 |
| 18              | BSI General Body Meeting                     | 19th St. Baptist Church                    | Beverly Fields                  | (202) 271-2460                   |
| 23              | BSI Christmas Party                          | Normandie Farms, Potomac, MD               | Vera Johnson                    | (301) 482-1038                   |
| <b>2013</b>     |  |  |                                 |                                  |
| <b>January</b>  |  |  |                                 |                                  |
| 16 - 21         | NBS-Western Region Winter Carnival           | Squaw Valley Ski Resort, Lake Tahoe, CA    | Ken Moris                       | (301) 792-0960                   |
| 22              | BSI General Body Meeting                     | 19th St. Baptist Church                    | Beverly Fields                  | (202) 271-2460                   |
| 27              | BSI Day Trip                                 | Whitetail Resort, Mercersburg, PA          | daytrips@blackskiinc.org        |                                  |
| <b>February</b> |  |  |                                 |                                  |
| 1 - 3           | NBS-MidWest Region Winterfest                | Seven Springs Mountain Resort              | Darlene Bing<br>Azara Turaki    | (202) 262-6424<br>(202) 640-9324 |
| 9               | BSI Family Day Trip                          | Whitetail Resort, Mercersburg, PA          | daytrips@blackskiinc.org        |                                  |
| 19              | BSI General Body Meeting                     | 19th St. Baptist Church                    | Beverly Fields                  | (202) 271-2460                   |
| 23 - March 2    | NBS 40th Anniversary Summit                  | Aspen Snowmass                             | Gloria Savoy<br>Michelle McLean | (301) 890-4557<br>(240) 461-1515 |
| <b>March</b>    |  |  |                                 |                                  |
| 26              | BSI General Body Meeting                     | 19th St. Baptist Church                    | Beverly Fields                  | (202) 271-2460                   |
| 17 - 24         | Spring Fling 2013                            | Telluride, Colorado                        | Tanya Jones<br>Mike Saizan      | (301) 680-8926<br>(301) 297-7434 |

**Visit [www.blackskiinc.org](http://www.blackskiinc.org) for the latest updates on our event schedule**



**Do you have writing experience? • Are you a published author?**

**Can you see yourself writing Black Ski's History?**

**If so We Need You to Write Black Ski's 40 Year History!**

**Contact Vicki McGill, President at [president@blackskiinc.org](mailto:president@blackskiinc.org)**

# Membership Happy Hours Return Join Us at

CAROLINA KITCHEN BAR & GRILL



Wed., November 21, 2012 · 6 PM - Until

**THE CAROLINA Kitchen**  
PRESENTS  
**WINE DOWN**  
*Wednesday*  
**FEATURING LIVE JAZZ**  
**PERFORMANCE BY BRIAN LENOIR**

HOSTED BY  
RENAISSANCE SOCIETY CEO &  
HOST OF THE CELLAR  
RICHARD GLOVER

“★★★★★”  
CRITICS CHOICE

SPECIAL GUESTS  
MEGA - POWER HOST COMMITTEE  
LANCE LONDON  
GERARD SEABROOK | THELMA OKORO  
TERRANCE WILLIAMS | SHAWN GRAVES  
KIA COPPEDGE | YVONNE MINGO  
DARREN CROOM

COME CELEBRATE  
WITH ALL THE LIBRA'S  
ON THEIR BIRTHDAYS!

5PM-7PM: COMPLIMENTARY APPETIZERS  
7PM: WINE TASTING  
8PM: LIVE PERFORMANCE

**WEDNESDAY NOV 21, 2012**

**THE CAROLINA KITCHEN BAR & GRILL**  
6501 AMERICA BLVD HYATTSVILLE, MD 20782  
WWW.THECAROLINAKITCHEN.COM | 301.927.2929

twitter YouTube facebook

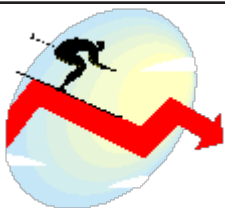
*Comes Out & Mingles · Dances · Have Fun!!!*

**NO WORK THE NEXT DAY...IT'S A HOLIDAY!**

[www.blackskiinc.org](http://www.blackskiinc.org)

**6501 America Blvd, Hyattsville, MD**

(Right Next to The Mall at Prince Georges & The Prince Georges Plaza Metro Stop)



# Black Ski Youth

**Getting ready for the snow to start falling or  
the snow guns to start blowing!**

Do you realize it's only a little over a month away until the Black Ski Youth will be training to ski & snowboard at Liberty Mountain Resort? If you are pumped up for the winter season contact our BSI Youth Director, Beverly Broady at [youth@blackskiinc.org](mailto:youth@blackskiinc.org) or call **(301) 249-5955** to get a detailed application. Join our Black Ski Youth Development Program Training for 4 Sundays (8:30am-3:00pm) for only \$391 (includes Lift/Lessons).

**Sign up today to participate & commit some time to support our BSI Youth Program.**

Our youth athletes can learn to ski well, while they find levels of comfort, confidence and their excellence in the Black Ski Youth Skiing/Snowboarding Development Training

**Listed below are the Black Ski 2012-13 Eastern Region Team members**

- 7 BSI Youth out of 12 youth were **selected** for the NBS Eastern Region Team
- 5 BSI Youth out of 7 youth **qualified** to be on the A & B Teams.

| Name                                   | Ski<br>SB | M / F | USSA Class<br>Age Category<br>formerly |
|--|-----------|-------|--|
| <b><u>A Team Members</u></b>           |           |       |  |
| <b><u>(U18-U16)</u></b>                |           |       |  |
| Christian Kennedy                      | Ski       | M     | J 2 2nd year                           |
| <b><u>B Team Members</u></b>           |           |       |  |
| <b><u>(U16-U14)</u></b>                |           |       |  |
| Marcel Joseph                          | Ski       | M     | J 3 2nd year                           |
| Campbell Wilson                        | Ski       | M     | J 3 2nd year                           |
| Alex Crute                             | Ski       | M     | J 3 1st year                           |
| Marshall Brown                         | Ski       | M     | J 4 2nd year                           |
| <b><u>Development Team Members</u></b> |           |       |  |
| <b><u>(U12)</u></b>                    |           |       |  |
| Zoe Crute                              | Ski       | F     | J 5 2nd year                           |
| Jackson Brown                          | Ski       | M     | J 5 2nd year                           |



# Black Ski Christmas Party

Sunday, December 23, 2012 • 6 - 11 pm

Normandie Farms

10710 Falls Road, Potomac, MD

**Dinner & Dancing**

Tickets: \$48

**On Sale at October General Body Meeting & Online**

**www.blackskiinc.org**

**Contact:** Vera Johnson, VP-Hospitality

301-482-1038

hospitality@blackskiinc.org

**Mail Order Purchase Information:** Tickets will be available by mail until December 10, 2012. All ticket orders received by mail without a self-addressed stamped envelope will be available for pick up at will call on the night of the event.

Please write legibly and return this form with your Check or Money Order made payable to **Black Ski, Inc.** AND a **SELF ADDRESSED STAMPED ENVELOPE** to:

Black Ski, Inc. c/o Vera Johnson  
25110 Highland Manor Court  
Laytonsville, MD 20882

Please note on your check or money order: "**Black Ski Christmas Party**"

| Item                            | Number             | Amount |
|---------------------------------|--------------------|--------|
| Individual Tickets - \$48 each  | _____ X \$48 each  |        |
| Tables of 10 seats - \$480 each | _____ X \$480 each |        |

Total Enclosed

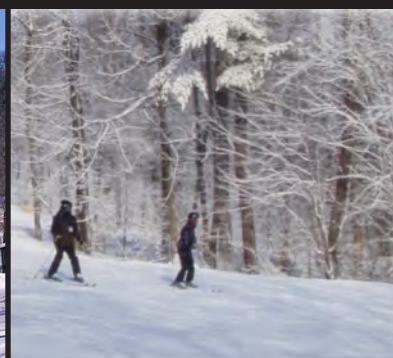
Name \_\_\_\_\_ Member Number (If Known) \_\_\_\_\_

Address \_\_\_\_\_

City \_\_\_\_\_ State \_\_\_\_\_ Zip Code \_\_\_\_\_ E-Mail Address \_\_\_\_\_

Home Phone \_\_\_\_\_ Work or Cell Phone \_\_\_\_\_

**Please DO NOT send any ticket orders to Black Ski PO Box.**



**Learn to Ski/Snowboard or Improve Your Skills Locally**  
**Package Includes Lift Ticket, One Hour Lesson and Rentals**  
**Beginner and All Mountain Packages Available**  
**Lift, Lesson and Rentals also sold separately**  
**Bus Transportation Departs from Greenbelt, MD**  
**Sign-up early, transportation space will be limited.**

**January 27, 2013 • February 9, 2013**

**Bus departs Greenbelt Metro at 6:30 am • Arrives at Resort at 8:00 am**  
**Departs Resort at 4:00 pm • Returns to Parking Area at 5:30 pm**  
**Day Trip Coordinator email: [daytrips@blackskiinc.org](mailto:daytrips@blackskiinc.org)**

| Quantity | Price | Package               | Package Includes  |
|----------|-------|-----------------------|---|
|          | \$125 | All Mountain          | Equipment Rental, Total Trail Access Lift Ticket, Lesson and Bus          |
|          | \$112 | Learn to Ski/Board    | Equipment Rental, Limited Trail Access Lift Ticket, Lesson, Meal & Bus    |
|          | \$97  | Transportation & Lift | All Trail Access Lift Ticket and Bus                                      |
|          | \$95  | All Mountain          | Equipment Rental, Total Trail Access Lift Ticket, and Lesson Only         |
|          | \$82  | Learn to Ski/Board    | Equipment Rental, Limited Trail Access Lift Ticket, Lesson, and Meal Only |
|          | \$67  | Lift Only             | All Trail Access Lift Ticket Only   |
|          | \$30  | Transportation Only   | Transportation Only   |
|          | \$10  | Meal Ticket           | Discounted Meal Voucher for Food Court                                    |

**Total \$** \_\_\_\_\_ **Date:** ☐ January 27 ☐ February 9

Participant Name \_\_\_\_\_ E-Mail \_\_\_\_\_

Phone: Home \_\_\_\_\_ Cell \_\_\_\_\_ Work \_\_\_\_\_

Age Group: Adult \_\_\_\_\_ Youth-Age \_\_\_\_\_ Youth Guardian \_\_\_\_\_

Emergency Contact Name \_\_\_\_\_ Telephone (\_\_\_\_\_) \_\_\_\_\_

Mail this form with your payment to: **Black Ski, Inc.**, P.O. Box 90762, Washington, D.C. 20090-0762  
 Payments are Fully Refundable up to the Tuesday before the Trip. Checks accepted up to two weeks before trip date. For More Information and to  
 Pay via PayPal at [www.blackskiinc.org/daytrips.html](http://www.blackskiinc.org/daytrips.html)





# Join Black Ski for NBS Western Region's Winter Carnival '13 @ Squaw Valley January 16 - 21, 2013



**Early Registration Ends October 31, 2012**

**\$1,498 - \$1,528/Person based on Double Occupancy**

**\$1,420 - \$1,450/Person based on Double Occupancy Senior Discount**

## TRIP PACKAGE INCLUDES:

- Roundtrip Air Transportation to Reno, NV from BWI
  - Roundtrip Ground Transportation from Reno to The Village of Squaw Valley
  - 6 Days / 5 Nights Lodging at the Village of Squaw Valley
  - 3-Day Lift Ticket to Squaw Valley
  - NBS Registration for Theme Parties, Happy Hours, Racing and Picnic On The Hill
- Single Occupancy (\$2,073), NBS Registration / Lift Package and Additional Hotel Days or Lift Tickets at the NBS discounted rates are available upon request*

## Mountain Stats

### Elevations:

|                    |        |
|--------------------|--------|
| Base               | 6,200' |
| Summit             | 9,050' |
| Vertical rise      | 2,850' |
| Six Mountain Peaks |        |

### Terrain:

|              |     |
|--------------|-----|
| Beginner     | 25% |
| Intermediate | 45% |
| Advanced     | 30% |

|               |           |
|---------------|-----------|
| Skiable Acres | 3,600     |
| Trails        | 170+      |
| Bowls         | 16        |
| Longest Run   | 3.2 miles |
| Terrain Parks | 5         |
| Lifts         | 30        |

## PAYMENT SCHEDULE

|         |       |                |               |               |
|---------|-------|----------------|---------------|---------------|
| Deposit | \$300 | Aug. 28, 2012  | \$350         | Nov. 27, 2012 |
|         | \$300 | Sept. 25, 2012 | Final Payment | Dec. 10, 2012 |
|         | \$350 | Oct. 23, 2012  |               |               |

Deposits and payments are now being accepted and are fully refundable through October 20, 2012. Cancellations after October 20, 2012 are subject to a \$300 cancellation fee

**Trip Director:** Ken Moris 301-593-1885 or 301-792-0960 email: [wintercarnival@blackskiinc.org](mailto:wintercarnival@blackskiinc.org)

**NBS-WR Winter Carnival @ Squaw Valley** Amount Enclosed \$ \_\_\_\_\_ BSI Member No. \_\_\_\_\_

Name First \_\_\_\_\_ Middle \_\_\_\_\_ Last \_\_\_\_\_ M/F \_\_\_\_\_

Address \_\_\_\_\_ City \_\_\_\_\_ State \_\_\_\_\_ Zip \_\_\_\_\_

Telephone \_\_\_\_\_ Home \_\_\_\_\_ Work \_\_\_\_\_ Cell \_\_\_\_\_

E-mail \_\_\_\_\_ Roommates \_\_\_\_\_

Air? ☐ Yes ☐ No Bus Transportation ☐ Yes ☐ No Do you mind opposite sex room mates? ☐ Yes ☐ No

Emergency Contact Name \_\_\_\_\_ Telephone (\_\_\_\_) \_\_\_\_\_

**Mail this form with your payment to:**

Black Ski, Inc., P.O. Box 90762, Washington, D.C. 20090-0762



**Singles • Couples • Families • New & Experienced Skiers & Boarders**

**Join Black Ski Inc. for  
2013 NBS-MidWest Region Winterfest  
@ Seven Springs Mountain Resort  
February 1 - 3, 2013**



**TRIP INCLUDES:**

- Round Trip Bus Transportation
- 2 Nights Lodging / 2.5 Days Lift Tickets
- 2 Breakfasts/1 Buffet Dinner
- Early Registration\* with Hospitality Room
- Racing/Awards & Saturday Evening Dance

**LODGING OPTIONS**

**Traditional Hotel - Open space/2 Queen Beds**

Quad Occ. \$455 Double Occ. \$575

**Family-Style Hotel Room Wall & Bath between 2 Queen Beds**

Quad Occ. \$495 Double Occ. \$620

**Youth 11 & Under Staying with 2 Adults \$265**

**BLACK SKI MEMBERSHIP REQUIRED**

**RENTALS & SKIING/BOARDING LESSON OPTIONS AVAILABLE**

**\* AFTER November 30 ADD \$35 FOR REGISTRATION**

**2012 PAYMENT SCHEDULE**

Deposit \$200 Aug. 28 \$150 Oct. 23

\$150 Sept. 25 Final Payment Nov. 27

Cancellations after October 1, 2012, are subject to a \$150 cancellation fee.

**Trip Director: Darlene Bing · 202-262-6424**

**Asst. Trip Director: Azara Turaki · 202-640-9324**

**E-mail: [sevensprings@blackskiinc.org](mailto:sevensprings@blackskiinc.org)**

**Sign Up Online: [www.blackskiinc.org/sevensprings.html](http://www.blackskiinc.org/sevensprings.html)**

**Roller Skating & Blading • Sleigh Rides • Snowcat Rides • Snowmobile Tours • Snowshoe Tours  
Bowling • Swimming • Hot Tubs • Spa • Game Rooms • Restaurants • Eateries & Much More!**

NBS-MWR Winterfest @ 7 Springs Amount Enclosed \$ \_\_\_\_\_ BSI Member No. \_\_\_\_\_

Name First \_\_\_\_\_ Middle \_\_\_\_\_ Last \_\_\_\_\_ M/F \_\_\_\_\_

Address \_\_\_\_\_ City \_\_\_\_\_ State \_\_\_\_\_ Zip \_\_\_\_\_

Telephone \_\_\_\_\_ Home \_\_\_\_\_ Work \_\_\_\_\_ Cell \_\_\_\_\_

E-mail \_\_\_\_\_ Roommates \_\_\_\_\_

Package Type: ☐ Adult ☐ Youth Age 11 & Under staying with Two Adults Bus Transportation ☐ Yes ☐ No

Accommodations: ☐ Quad ☐ Double Do you mind opposite sex room mates? ☐ Yes ☐ No

Emergency Contact Name \_\_\_\_\_ Telephone (\_\_\_\_\_) \_\_\_\_\_

**Mail this form with your payment to:**

**Black Ski, Inc., P.O. Box 90762, Washington, D.C. 20090-0762**





# JOIN BLACK SKI INC. FOR THE 40TH ANNUAL NBS SKI SUMMIT at Aspen Snowmass, CO FEBRUARY 23 – MARCH 2, 2013



With a vertical drop of 4,406 feet, 3,132 acres of terrain, cruisers, glades and steeps, the sheer volume of **Snowmass** demands repeat visits. Just down the road, **Aspen Mountain** has been serving up black-diamond glades, bumps and steeps for anyone who dares step off the lift. **Aspen Highlands** boasts breathtaking vistas of the surrounding Maroon Bells and an abundance of expert terrain and groomed cruisers. **Buttermilk** is actually best known for wide-open and gently rolling trails that cater to beginners and families. The Power of Four has it all!

## PACKAGES FROM

**\$1,250 - Without Air or Ground Transportation**

**\$1,900 - With Air and Ground Transportation**

Prices are per person/double occupancy

Early registration ends **November 30th**

Cancellations after **August 31, 2012**, are subject to a **\$250 cancellation fee**

### PACKAGE INCLUDES

- Round Trip air from BWI or DCA to Denver
- Ground transportation to Aspen Snowmass
- 7 nights lodging in condos or hotel
- NBS registration for Happy Hours, Picnic On The Hill, Free Cross Country Skiing and Racing (65+ senior discount)
- 5 day lift ticket (3, 4 and 6 days available upon request)

Lessons & equipment rentals available for an additional discounted cost



### PAYMENT SCHEDULE

|                      |                 |                      |                    |
|----------------------|-----------------|----------------------|--------------------|
| <b>Deposit</b> \$250 | June 26, 2012   | \$250                | September 25, 2012 |
| \$250                | July 24, 2012   | \$250                | October 23, 2012   |
| \$250                | August 28, 2012 | <b>FINAL PAYMENT</b> | November 27, 2012  |

**TRIP DIRECTOR Gloria Savoy** (301) 890-4557 • **ASST. TRIP DIRECTOR Michelle McLean** (240) 461-1515

email: [summit@blackskiinc.org](mailto:summit@blackskiinc.org) • Online Payments: [www.blackskiinc.org/summit.html](http://www.blackskiinc.org/summit.html)

### Trip Payment Form

NBS Summit 2013 Aspen Snowmass Amount Enclosed \$\_\_\_\_\_ BSI Member No. \_\_\_\_\_

Your Legal Name First \_\_\_\_\_ Middle \_\_\_\_\_ Last \_\_\_\_\_

M/F \_\_\_\_\_ Birth Month/Day/Year \_\_\_\_/\_\_\_\_/\_\_\_\_ Note: Airline tickets will be issued in the name you use.

Address \_\_\_\_\_ City \_\_\_\_\_ State \_\_\_\_\_ Zip \_\_\_\_\_

Telephone \_\_\_\_\_ Home \_\_\_\_\_ Work \_\_\_\_\_ Cell \_\_\_\_\_

E-mail \_\_\_\_\_

Please check all that apply: Air Seat ☐ BWI ☐ DCA Ground Transfers? ☐ Yes ☐ No Registration ☐ Yes ☐ No ☐ Senior (65+)

**Accommodations:** ☐ Condo ☐ Hotel Do you mind opposite sex condo mates? ☐ Yes ☐ No

Roommate \_\_\_\_\_ Condo Mates \_\_\_\_\_

Lift Package ☐ 3 days ☐ 4 days ☐ 5 days ☐ 6 days

Emergency Contact Name \_\_\_\_\_ Telephone (\_\_\_\_) \_\_\_\_\_

Mail this form with your payment to: Black Ski, Inc., P.O. Box 90762, Washington, D.C. 20090-0762



## Spring Fling 2013 Telluride, Colorado

**Sunday, March 17 – Sunday, March 24**

**Package Price: \$1780.00 pp**



**Telluride Ski Resort – A luxurious world-class resort with excellent terrain for all level skiers.**

- Ranked No. 5 overall by Ski Magazine readers.
- The resort's **new Revelation Lift** reaches 12,570 feet and accesses Revelation Bowl, the ten Gold Hill Chutes and backcountry terrain.
- Uptown and downtown, chic and bohemian, a historic mining town, the Old West meets the New West.
- Everything you need is within walking distance via the free gondola. Free bus services around town.

### Trip Includes:

- Round trip air to Montrose Airport - from BWI or National Airports via American Airlines.
- Ground transportation to and from Montrose airport to the Resort - a 1.5 hour drive.
- Five-day lift ticket.
- Welcome Party & Private Black Ski Dinner.
- Seven nights lodging at The PEAKS Resort & SPA with Ski In/Ski Out
  - ❖ Ranked one of the top 50 places to Ski and Stay in North America
  - ❖ Ranked 15<sup>th</sup> Best Spa in North American by Conde Nast Traveler
  - ❖ Two person hotel room with two king beds and mini frig - \$1780 pp
  - ❖ Single occupancy hotel room +\$680
  - ❖ Located in the Mountain Village in the center of activity
  - ❖ The Peaks web site: <http://thepeaksresort.com/>
- **Airline Baggage Fees NOT included in price– fees paid at check-in**
- **Possible Airline Fuel Surcharges NOT included in price**



### Optional Items:

- 6-day lift ticket +\$50; 4-day lift ticket -\$40; 3-day lift ticket -\$80 (Sorry, no senior rates)
- Deluxe Continental Breakfast Buffet +\$90 required for both occupants per room
- A few condos per special request, at the Sun Peaks and Bear Creek Lodge (consult with Trip Director)

**NOTE: Trip is Sunday to Sunday, not Saturday to Saturday**

### Payment Schedule:

|       |   |         |                  |
|-------|---|---------|------------------|
| \$250 | Initial deposit July 1, (non-refundable after Sept 1) | Balance | January 25, 2013 |
| \$250 | August, September, October, November, December        |         |                  |

Trip Director - Tanya Jones H-301-680-8926 - [Tanyalj20904@yahoo.com](mailto:Tanyalj20904@yahoo.com)

Assistant Trip Director - Mike Saizan H-301-297-7434 – C-301-785-2964 – [bsi.atd@verizon.net](mailto:bsi.atd@verizon.net)

Full Legal Name \_\_\_\_\_ BSI Member # \_\_\_\_\_

Address \_\_\_\_\_ City \_\_\_\_\_ State \_\_\_\_\_ Zip \_\_\_\_\_

Full date of birth, M/D/Y \_\_\_\_\_ Phone: H \_\_\_\_\_ C/W \_\_\_\_\_ M / F

E-mail \_\_\_\_\_ Roommate \_\_\_\_\_

Emergency Contact \_\_\_\_\_ Phone # \_\_\_\_\_

Lodging: ☐ Double Hotel Room with two King Beds - ( \$1780 pp) ☐ Single Occupancy - Hotel Room (+\$680 )

Air (via AA): ☐ BWI ☐ National ☐ Doing Own Air (-\$518) ☐ Condo Option (Contact TD)

Lift Tickets: ☐ 5-Day ☐ 6-Day (+\$50) ☐ 4-Day (-\$40) ☐ 3-Day (-\$80) ☐ No Lift Ticket (-\$236)

☐ Continental Breakfast Buffet (+\$90) ☐ Travel Insurance Info (via Winter Ski & Sport web site)

☐ I agree to the TERMS and CONDITIONS STATEMENT of Black Ski, Inc

Mail to Black Ski Inc, PO Box 90762, Washington, DC 20090-0762

7/30/12



# HUGE

## BLACK SKI

# MEMBERSHIP SALE!!

Gift Certificates Available

**GOT FAMILY MEMBERS & FRIENDS  
WHO AREN'T BLACK SKI MEMBERS YET?  
JUST IN TIME FOR THE HOLIDAYS**

**40th Anniversary NEW Membership Prices RETURN  
December 1 - 23, 2012**

### October - November

**NEW Individual \$50 NOT \$55**

**NEW Families \$85 NOT \$90**

**NEW Youth \$10 NOT \$15**

### Holiday SPECIAL

**NEW Individual \$40 NOT \$55**

**NEW Families \$55 NOT \$90**

**NEW Lifetime \$400 NOT \$500**

Pricing December 1 - 23, 2012



*Sponsor gets \$5.00 certificate for use on Black Ski activities for each new Lifetime, Individual or Family membership.*

## Member Signup & Renewal Now Available Online!

[www.blackskiinc.org/membership.org](http://www.blackskiinc.org/membership.org)

**Membership Lapsed for years? Need to Rejoin?**

**Rejoin at the regular renewal rate without the lapse fee through December ONLY!**

**RENEWING Individual \$30 • Families \$45 • Youth \$10**



**GIVE THE GIFT OF THE GREAT TRIPS...PARTIES...& FUN!  
SPREAD THE WORD! [WWW.BLACKSKIINC.ORG](http://WWW.BLACKSKIINC.ORG)**



## ADVANCED PLANNING MEETINGS

**1ST MONDAY OF EACH MONTH @ 7 PM  
TURNER MEMORIAL AME CHURCH**

7201 16TH PLACE, HYATTSVILLE, MD

***Next Meetings  
Dec. 10 & Jan. 7***

**Contact Vicki McGill  
for more information**

202.526.6246

advanceplanning@blackskiinc.org

***Trip Directors needed.***

***Training Available***

***Now is a great time to GET INVOLVED!***

## Get It While It's Hot!

***Get Hot Wax Delivered to you via  
email before it hits the streets!***

By getting **HOT WAX** delivered to your email box

You get the latest news even earlier

You get the full effect of the color layout,

***and best of all***

You'll be able to save the full color

PDF version for future reference.

To get ***e-HOT WAX***

**Email Darlene Bing, VP of Communications, at  
communications@blackskiinc.org**

Include your name, email address and membership number

***Do it today!***

Note: You'll need Adobe Acrobat Reader to open the document.

You can download the software-free of charge-  
by visiting [www.adobe.com](http://www.adobe.com).

## ADVERTISE YOUR SERVICES IN HOT WAX

**HOT WAX** is distributed monthly to 700 Black Ski members located throughout the DC Metropolitan Area and beyond. By advertising your products and services, you can effectively reach a select and dynamic group of civic-minded professionals with a variety of sporting and social interests.

### ADVERTISING RATES

| <b>Full Page</b>    | <b>Half Page</b>    | <b>1/4 Page</b>     | <b>1/8 Page</b>    |
|---------------------|---------------------|---------------------|--------------------|
| 8 1/2 X 11          | 8 1/2 X 5 1/2       | 4 1/4 X 5 1/2       | 2 1/4 X 4 1/8      |
| \$50.00 per issue   | \$35.00 per issue   | \$20.00 per issue   | \$15.00 per issue  |
| \$270.00 six issues | \$190.00 six issues | \$110.00 six issues | \$80.00 six issues |

***Deadline for Ad Submission is the 15th of each month for  
inclusion in the following month's Hot Wax***

For details contact:

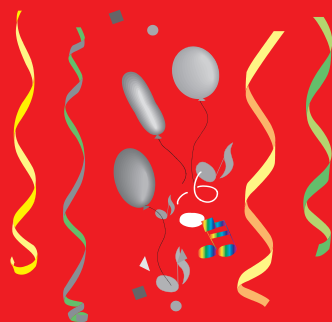
Darlene Bing, VP Communications

communications@blackskiinc.org ***email*** • 202.262.6424 ***telephone***



# Happy Birthday

## November Birthdays!



|                         |                      |                   |                   |
|-------------------------|----------------------|-------------------|-------------------|
| Josita Allen            | Priscilla Fearington | Charles Martin    | Gloria Savoy      |
| Wes Anderson            | Rosalind Felder      | Carol Maze        | Tracy Sbrocco     |
| Amel Anderson           | Alvin Frazier        | Ronda McCall      | Oliver Silver     |
| Rhonda Anderson-Speight | Agnes Glenn          | Vicki McGill      | Eugene Spencer    |
| Rollen Bard             | Samuel Goodson       | Cheryl Miller     | Leonard Stephens  |
| Jakim Barnett           | Kay Hairston         | Kenneth Moris     | Willa Stokes      |
| Virgie Baskerville      | Deborah Henry        | Delores Mounsey   | Catherine Thomas- |
| Yazmine Blake           | Diane Herndon        | Robin Murphy      | Pinkney           |
| Edith Bloodworth        | William Huggins      | Marie Murray      | Diana Thompson    |
| Lorena Bow              | William Hunter       | F Magruder Murray | Jimmy Thorne      |
| Marshall Brown          | William Kelton       | Bernard Mustafa   | Carl Thurston     |
| Willie Darasaw          | Gwendolyn Lindsay    | Marcus Oliver     | Gerald Washington |
| Gertrude Edwards        | Phyllis Love         | Duane Parker      | Marian Webber     |
| Neval Featherstone      | Diane Luallen        | Louis Price       | Melita Yearwood   |

### Black Ski Inc., Trip Payment Form



**Anyone attending a trip that runs a weekend or longer must be a club member.** Please use one form for each trip you are paying for as each sheet will be forwarded to the trip director. We cannot duplicate the information you provide as trip directors do not see your check. Each payment should be accompanied by a trip payment form.

**Trip Name** \_\_\_\_\_ **Trip Date** \_\_\_\_\_ **Amount Enclosed \$** \_\_\_\_\_  
**Indicate Ski Package** \_\_\_\_\_ **Lessons?** Yes ☐ No ☐ **Rentals?** Yes ☐ No ☐  
**Your Legal Name** \_\_\_\_\_ **M/F** \_\_\_\_\_ **Birth Month/Day/Year** \_\_\_\_/\_\_\_\_/\_\_\_\_ (TSA Requirement)  
 Note: **Airline tickets will be issued in the name you use. Please be consistent** Airfare Charge option? ☐ Yes ☐ No  
**Address** \_\_\_\_\_ **City** \_\_\_\_\_ **State** \_\_\_\_\_ **Zip** \_\_\_\_\_  
**Telephone** \_\_\_\_\_ **Home** \_\_\_\_\_ **Work BSI Member No.** \_\_\_\_\_ **E-mail** \_\_\_\_\_  
 Please check all that apply: Air Option? ☐ Yes ☐ No Departing Airport ☐ BWI ☐ Dulles ☐ National  
 Ground Transfers? ☐ Yes ☐ No Accommodations ☐ Hotel Single/Double ☐ 2 Bedroom ☐ 3 Bedroom Condo  
**Roommate** \_\_\_\_\_ **Condo Mates** \_\_\_\_\_  
 Lift Tickets 3 days ☐ 4 ☐ 5 ☐ 6 ☐ Do you mind opposite sex condo mates? ☐ Yes ☐ No  
 Children? ☐ Yes ☐ No Is your child: ☐ Under 5yrs ☐ 6 - 15 yrs ☐ 16 - 18 yrs  
**Emergency Contact Name** \_\_\_\_\_ **Telephone ( )** \_\_\_\_\_

Mail this form with your payment to: Black Ski, Inc., P.O. Box 90762, Washington, D.C. 20090-0762

## BLACK SKI, INC. TERMS & CONDITIONS STATEMENT



WASHINGTON D.C.

Effective 9/1/00 Anyone going on a weekend or longer trip must be a club member.

An initial deposit per person is required to confirm your reservation. A non-refundable deposit fee of up to \$250 will be assessed if cancellation is received after date specified on trip flyer.

### PAYMENTS

The payment schedule outlined on trip flyer must be adhered to unless arrangements are made with the Trip Directors. Failure to receive payment by date specified may cause loss of reservation (see cancellation for non-payment below). Monies received within thirty (30) days of the trip date will only be accepted in the form of a money order, certified check or cashier's check. No cash or personal check transactions will be accepted.

### CANCELLATION

(a) Request for cancellation: A request to cancel from a trip must be in writing and directed to the Trip Director. The participant by voluntarily requesting to be canceled from the trip will be assessed the non-refundable deposit fee (as specified on trip flyer) plus any payments that have been made to vendors on his/her behalf. (b) Cancellation for non-payment: The participant is required to adhere to the trip's published payment schedule. If adherence is to the contrary, you will be notified in writing after you have missed two consecutive scheduled payments. The participant will be allowed fifteen (15) days to bring his/her scheduled payment plan up-to-date. If payment is not received after notification, all monies may be returned to the participant minus the nonrefundable deposit fee plus any payments that have been made to the vendors on his/her behalf.

### REFUNDS AND TRANSFERS

**Black Ski Inc.** will make all attempts to refund participants whenever possible. Refunds will be made only after suitable replacements are found. Participant transferring funds from one trip to another must do so in writing and have authorization from both trip directors.

### TRIP INSURANCE

The purchase of trip cancellation/interruption insurance is recommended and is usually available for a nominal fee.

### ROOM ASSIGNMENT

**Black Ski** will attempt to honor all requests but reserves the right to make changes.

### SKIER'S RESPONSIBILITY CODE

1. Always stay in control and be able to stop or avoid other people or objects.
2. People ahead of you have the right of way. It is your responsibility to avoid them.
3. You must not stop where you obstruct a trail or are not visible from above.
4. Whenever starting downhill or merging into a trail, look up hill and yield to others.
5. Always use devices to help prevent runaway equipment.
6. Observe all posted signs and warnings. Keep off closed trails and out of closed areas.
7. Prior to using any lift, you must have the knowledge & ability to load, ride and unload safely.

**Black Ski, Inc.** is not liable for irregularities, loss, injury or damages to persons and/or property during the trip. The participant accepts that there are risks inherent in skiing and adventure activities and hereby releases Black Ski, Inc. from any and all liabilities.

I accept, acknowledge and understand the Terms & Conditions Statement stated above.

Signature\_\_\_\_\_ Date\_\_\_\_\_



# MEMBERSHIP APPLICATION/RENEWAL/INFORMATION UPDATE FORM



## BLACK SKI, MORE THAN JUST A SKI CLUB SEPTEMBER - DECEMBER MEMBERSHIP SALE

**Please Print**

First \_\_\_\_\_ Middle Initial \_\_\_\_\_ Last \_\_\_\_\_

Address \_\_\_\_\_

City \_\_\_\_\_ State \_\_\_\_\_ Zip Code \_\_\_\_\_ E-Mail Address \_\_\_\_\_

Telephone Number \_\_\_\_\_ Home \_\_\_\_\_ Work \_\_\_\_\_

Date of Birth \_\_\_\_\_ Member Number \_\_\_\_\_

Spouse First \_\_\_\_\_ Middle Initial \_\_\_\_\_ Last \_\_\_\_\_

Date of Birth \_\_\_\_\_ Member Number \_\_\_\_\_

Child Name \_\_\_\_\_ Date of Birth \_\_\_\_\_

Child Name \_\_\_\_\_ Date of Birth \_\_\_\_\_

| New Members                         |                 |            |          | Annual Renewal Rates                |         | Lifetime Membership                                       |  |
|-------------------------------------|-----------------|------------|----------|-------------------------------------|---------|---|--|
|                                     | Regular         | Oct. - Nov | Dec Only |                                     | Dec. 23 |   |  |
| <input type="checkbox"/> Individual | \$55            | \$50       | \$40     | <input type="checkbox"/> Individual | \$30    | <input type="checkbox"/> \$500 Flat Rate                  |  |
| <input type="checkbox"/> Family     | <del>\$90</del> | \$85       | \$55     | <input type="checkbox"/> Family*    | \$45    | <b>December Only</b>                                      |  |
| <input type="checkbox"/> Youth      | \$15            | \$10       | \$10     | <input type="checkbox"/> Youth      | \$10    | <input type="checkbox"/> <del>\$500</del> \$400 Flat Rate |  |

\* Family Includes parent(s) & children 7 - 18, No charge for children under 7 yrs. if a parent is a member

☐ Conversion from Individual to Family \$55

**Renewal after more than 18 months lapse - Individual \$40 Family \$55 No Lapse Fee Sept - Dec 2012**

**Consider making a generous donation to our Youth Program \$ \_\_\_\_\_**

By joining Black Ski, Inc., as a member, I hereby release Black Ski, Inc., its officers, directors, employees, leaders and volunteers from any liability, damages or claims arising from injury or property damage sustained by me related to any Black Ski, Inc. activity or event. Total Fee Enclosed \$ \_\_\_\_\_

I give permission for my name to be submitted to NBS sponsor list. Yes ☐ No ☐

Signature (Not Valid Unless Signed) \_\_\_\_\_ Date \_\_\_\_\_

Sponsor's Name \_\_\_\_\_ Date \_\_\_\_\_

*Sponsor gets \$5.00 certificate for use on Black Ski activities for each new Lifetime, Individual or Family membership.*

Indicate the Committee on which you would like to participate by checking the appropriate box(es)

☐ Advance Planning ☐ Youth ☐ Communications ☐ Fund Raising ☐ Business/Computer Support  
☐ Hospitality ☐ Budget & Finance ☐ Membership ☐ Other (Specify) \_\_\_\_\_

**Be sure you've completed the form properly and have included the total amount due.**

Send check or money order to:

**Membership Application/Renewal, Black Ski, Inc., P.O. Box 90762, Washington, D. C. 20090-0762**

## Black Ski, Inc. Executive Committee

|                        |                        |              |                                 |
|------------------------|------------------------|--------------|---------------------------------|
| President              | Vicki McGill           | 202.526.6246 | president@blackskiinc.org       |
| Secretary              | Alisa Dotson           | 301.438.0726 | secretary@blackskiinc.org       |
| Advanced Planning      | <i>Vacant</i>          |              | advanceplanning@blackskiinc.org |
| Administrative Support | Tammy Madison          | 443.949.5056 | adminsupport@blackskiinc.org    |
| Finance                | Regina Saizan          | 301.297.7434 | finance@blackskiinc.org         |
| Fund Raising           | Valerie Peters         | 301.221.0212 | fundraising@blackskiinc.org     |
| Hospitality            | Vera Johnson           | 301.482.1038 | hospitality@blackskiinc.org     |
| Membership             | Beverly Fields         | 202.271.2460 | membership@blackskiinc.org      |
| Racing                 | Debbie Davis           | 301.345.2280 | racing@blackskiinc.org          |
| Communications         | Darlene Bing           | 202.262.6424 | communications@blackskiinc.org  |
| Youth                  | Beverly Johnson Broady | 301.249.5955 | youth@blackskiinc.org           |

### Board of Directors

Russell Bacon  
Betty "BJ" Jones  
Lenny Milner\*

Lowell Blagmon  
Kathy Lambert, Secretary  
Ken Moris, Chairman  
Bill Wyatt

Larry Coleman  
Vicki McGill  
Rod Quick

*Furman Marshall\**

Mickey Diggs\* (Deceased)

*Donny Claytor\**

Ray Mott\* (Deceased)

*Jim Thorne\**

\* denotes Founding Members

- *Italics* denotes Inactive Members

### Communications Team

Karlyn Walker, Communications Coordinator  
Vicki McGill, Layout & Design



**Black Ski, Inc.**

P.O. Box 90762

Washington, D.C. 20090-0762

STD  
US POSTAGE PAID  
WASHINGTON, DC  
PERMIT NO. 884

**HOT WAX - The Official Publication of Black Ski, Inc**

www.blackskiinc.org • www.blackskiinc.net • www.blackskiinc.com • 301.231.3900

Yahoo Group: <http://sports.groups.yahoo.com/group/blackskiinc/>

**BLACK SKI, INC. 40TH ANNIVERSARY...CELEBRATING OUR PAST...MOVING INTO OUR FUTURE**