

Happy Thanksgiving Black Ski!



VOLUNTEERS NEEDED

The Black Ski Inc. Executive Committee has the following Vice President positions open:

MEMBERSHIP • COMMUNICATIONS • ADVANCE PLANNING • FINANCE

Please consider volunteering your talents to help **YOUR** ski club.

Contact Vicki McGill about any of these positions at president@blackskiinc.org

General Body Meetings

November 26, 2013

19th Street Baptist Church,
4606 16th Street, N.W., Wash., D.C.

Contact membership@blackskiinc.org

Special Date - December 17, 2013

**General Body Meetings are held the fourth
Tuesday of each month**

What's Inside:

Upcoming Black Ski Events	2, 6 - 10
From the President's Desk	3
Racer's Corner	5
Membership Sale	11
November Birthdays	13
BSI Forms	13 - 15

Visit www.blackskiinc.org/documents.html for our
Bylaws and Members Bill of Rights

Black Ski Event Calendar

Dates	Event	Location	Trip Directors/POC	Contact Number
November				
17	The Black Ski Experience @ REI	REI Tyson's Corner	president@blackskiinc.org	
26	BSI General Body Meeting	19th St. Baptist Church	membership@blackskiinc.org	
December				
7 - 14	Early Season Warm Up <i>Space Still Available!</i>	Keystone Resort Keystone, CO	Vicki McGill Alisa Dotson	(202) 526-6246 (301) 641-5127
17	BSI General Body Meeting	19th St. Baptist Church	membership@blackskiinc.org	
22	Annual BSI Christmas Party	Blue Dolphin Bar and Grill	Vera Johnson	(301) 910-9403
January 2014				
18 - 25	Sundance Film Festival SOLD OUT!	Park City Mountain Resort Park City, Utah	Vicki McGill Darlene Bing	(202) 526-6246 (202) 583-4504
February 2014				
8 - 15	Black Ski at Whistler <i>A Summit Alternative</i>	Whistler Blackcomb British Columbia	Michelle McLean Darlene Bing	(240) 461-1515 (202) 583-4504
March 2014				
7 - 9	Black Ski at Snowshoe 2014	Snowshoe Resort, WV	Azara Turaki Lydia Hunt	(202) 630-9055 (301) 676-3214
15 - 22	Black Ski Spring Fling	Big Sky Ski Resort Big Sky, Montana	Tanya Jones Mike Saizan	(301) 680-8921 (301) 297-7434

Visit www.blackskiinc.org for the latest updates on our event schedule

Bylaws Updates

The Black Ski Inc. Bylaws Committee continues to work on revisions to our existing Bylaws and proposes the following changes for consideration by the membership. Discussion took place at the October General Body Meeting and voting on the proposed changes will take place at our November General Body Meeting.

PROPOSED BLACK SKI INC. BYLAWS AMENDMENTS JULY 2013 (SEE UNDERLINED SECTIONS).

APPOINTMENTS

The duties of the officers shall be as follows:

1. President--The president shall be the presiding officer at the general membership and executive meetings and shall administer all business of Black Ski as provided for by the Bylaws. The president shall:
 - a. Designate a vice president to perform the duties of the president in his/her absence.
 - b. Coordinate the activities of the vice presidents for each functional area.
 - c. Act as liaison between the general membership and the board of directors.
 - d. Serve as a link between the National Brotherhood of Skiers and Black Ski.
 - e. Make temporary vice presidential appointments in the event of a vacancy. Such appointments will be reviewed at the next scheduled executive committee meeting and approved by a majority vote of the executive committee. The appointments will be

effective until the next election for that position (refer to Article V, Duties and Qualifications).

- f. Authorize and disburse funds as outlined by these Bylaws (see Article IX).
- g. Appoint individuals as necessary to ad hoc committees or to perform special functions for the club.
- h. Appoint a parliamentarian who advises the chair on matters pertaining to Robert's Rules of Order.

TERMS OF OFFICE

SECTION B--Term of Office

1. Officers shall be elected at the April meeting of the general membership.
2. All officers shall be elected for a term of two years. Officers shall begin their responsibilities on June 1 of their election year. (There shall be no limitation on consecutive terms of office.) The interim period (immediately following election of new officers) shall be used as a transitional period.
3. The terms of office will be staggered to maintain continuity within the club. The president, secretary, vice presidents for youth, administrative-technical support, fund raising, and racing will be elected during even-numbered years. The vice presidents for finance, hospitality, advanced planning, communications, and membership will be elected during odd-numbered years.
4. All appointed positions will serve until the next election for that position as noted above.
5. Any vacant position can be placed on the ballot for the next election in an off year for that position for service of one year after which the position will be placed on the ballot for election at its regular interval.

From the Desk of the President *Lots of great information this month!*

Mark Your Calendars

The December General Body meeting will be on Tuesday, December 17, 2013 as the 4th Tuesday in December falls on Christmas Eve this year.

REI Event

Sunday, November 17, 2013 REI in Tyson's Corner will host **The Black Ski Experience** exclusively for our members and guests featuring product specialists and demonstrations of the latest ski and board technologies and gear. See more info on page 7.

2013 Christmas Party

Our **Annual Christmas Party** is planned for **December 22, 2013** at Blue Dolphin Bar & Grill in Gambrills, MD. Come out and celebrate with our Black Ski Family. Tickets are available by Mail and at Club Meetings. Contact Vera Johnson for more information (301) 910-9403 or hospitality@blackskiinc.org

Black Ski Annual Membership Sale - In Full Swing!

Our membership sale started in September and will last until December 22, 2013. **SALE** Prices....Individual Membership **\$50** (not \$55)....Family Membership **\$85** (not \$90)... Youth Membership **\$10** (not \$15)...**DON'T MISS THE SALE!!!** Sign up and purchase **Black Ski Membership and renewal for yourself or as a gift ONLINE** or by mail. Membership applications and payment are available at www.blackskiinc.org/membership.html

November Bylaws Vote

Please be sure to attend the November General Body Meeting on November 26, 2013, to cast your vote for the latest updates to our current Black Ski Bylaws. Information regarding the updates is available on page 2 of this newsletter.

Our 2014 Elections are coming in April and the Nominations Committee is looking for volunteers

Please email Aaro Jean Bell-Reid at nominations@blackskiinc.org to express your interest in joining the nominations committee.

NBS Eastern Region Winterfest 2014

The NBS Eastern Region is not planning to have a Winterfest in 2014. The Eastern Region is looking for committee members for a Winterfest 2015 Committee as well as a Committee chair. If anyone is interested in serving on the committee or chair it please contact the Eastern Region Vice President Peggy Allen via email at nubianqn1@hotmail.com.

NBS Eastern Region Summerfest 2014 - Save the Date

August 7 - 10, 2014 - Melia Caribe Resort, Punta Cana, Dominican Republic. Stay Tuned for more information!

New NBS Eastern Region Website

The NBS Eastern Region has a new website at www.nbs.org/ er. Please visit the site, register to be a member and find out the latest regional and national news.

2013 - 14 Blue Ridge Ski Council Appreciation Days at Killington & Pico

Killington - Lift Ticket Prices range from \$37 - \$45 depending on the date

November 29 - 30, December 1, January 21 - 22, February 7 and 28, March 1 - 2, 8, 17 - 18, April 11 - 13

Pico - Lift Ticket Prices **\$29 - \$37 depending on the date**
January 23, February 9, 18 - 19, March 7 - 9

Additional information is available at www.skicouncil.com/tips-links/

Finance Vice President

We are STILL searching for a club member to join our Executive Committee in the capacity of Finance Vice President. This is a vital leadership role and needs to be filled quickly to maintain our financial processes. Prior experience is not necessary but the ability to attend monthly meetings and enter financial data on a weekly basis is required. Training will be provided. Please contact me for additional information or to express interest in the position at president@blackskiinc.org or 202-526-6246.

Returned Checks

Over the past few months we have received an increased number of returned checks from the bank as a result of insufficient funds. We realize the government shutdown may have impacted many. If you are having issues making scheduled trip payments please advise your trip director to see if a different payment plan can be worked out to ensure that your final payment is made by the deadline and make sure that you have sufficient funds to cover all payments. Our returned check policy requires the replacement of any returned checks with either a money order, cashier's check or certified check in the amount of the check amount plus the \$45.00 returned check fee within 15 days. Notification of all returned checks is sent via certified mail.

Black Ski - Going Green

Your Executive Committee is leading an initiative to make Black Ski "**Greener**." We are working toward a goal of phasing out the printed version of the Hot Wax newsletter by **January 2015** and providing each monthly issue by email and on our website. If you would like to start receiving the Hot Wax Newsletter via email please email newsletter@blackskiinc.org and provide your name and we will switch you to the *e-Hot Wax*. To serve our members without email access a small number of newsletters will still be printed.

—*Vicki R. McGill*, Black Ski, President

The Racer's Corner

Upcoming Events:

We have a bunch of exciting new and historic activities planned. Some highlights are:

- Fall 2013 – Ski Fitness Evaluation Session with Dryland Training Instruction
- 7-14 December 2013 – NBS Race at Keystone, Colorado NBS Early-Out Trip
- Winter 2014 – Sunday Race Training at Ski Liberty (Jan 12, 19, 26 and Feb 2, 9)
- Winter 2014 – Saturday NASTAR Racing at Bryce, Wisp and/or Roundtop
- 18-25 January 2014 – Daily NASTAR Racing at Park City, Utah Sundance Trip
- 25-30 March 2014 – National NASTAR Championships at Snowmass, Colorado

Racer Profile: Maya Johnson-Nimo

What is your nickname?

I don't have a nickname, just Maya

What is your favorite mountain? Vail

How long have you been skiing? Since I was 6 years old

What year did you ski the most and how many days on snow was it? I skied the

most during my freshman year of high school 1992/1993. I skied at least 20 days that season between practicing with the Ski Liberty Race Team and Black Ski/NBS Ski Racing Teams. *What brand, model, and length ski do you race on?* In the past, I used Atomics (length 180)

What was your best race finish? I have several NASTAR finishes – best is unknown; this year I placed Bronze at the NBS Summit

What has been your most memorable race experience? I've only been to two NBS Summits (Vail 1993 and Snowmass 2013), they were both awesome. My first NBS Summit while in high school was most memorable. I had never ever seen so many black people skiing together in one place. It was awesome, nothing compares with your first NBS Summit experience. Everyone was dressed so sharp in their ski gear and most were pretty good skiers. I'll always remember the slim tall man skiing with the red tuxedo. I was truly blessed to be able to attend the Summit and represent Black Ski as a Racer.

What little known fact about yourself would you like to share?

With going to college and graduate school, getting married and then starting a family, I could not ski for several years. I missed being on the slopes and just having good solid fun skiing. After a 15 year hiatus, I returned to the slopes in 2013



and was able to introduce both of my young sons to the sport. Moreover, I retained many of the skills I learned during my youth and still placed in the NBS NASTAR race this year.

Coldest ski resort you skied? Race training at Jay Peak, Vermont. The temperature was 10 to 20 below zero. I don't intend to go back there during the winter any time soon.

What attracted you to skiing and racing? Once I learned to ski and continued to advance, the most natural progression at that time was to compete through recreational racing and then join the Ski Team. I competed with the Black Ski Racing Team, NBS Ski Racing Team and Liberty Mountain Ski Team in Pennsylvania.

Fact Check:

I will be more competitive on a short versus long race course.

IT DEPENDS. For us weekend warriors that are not professional racers you need to understand the implications involved and the impact of short versus long race courses. NASTAR usually has short race courses on tame non-threatening hills. This means young kids and senior citizens at beginner levels can enjoy the thrill of racing and competing. When you race in more advanced races such as Masters or elite club racing you will see longer race courses on steeper terrain.

Remember ski racing is a race to see who can get from the start to the finish going through all of the gates the fastest. If the length is short like a 100 yard dash, the difference between the racers will be small. If the length is long like a marathon, the difference between the racers will be large. Similarly with ski racing a lot depends on your physical attributes and skill level. A short course will favor the racer that is not as fit as his/her competitors. The more gates you have the more energy it takes and the longer you have to keep your concentration unwavering. For the beginner racer the short course is more fun and can be more easily mastered because mistakes and the probability of falling will be reduced. It is not linear. The longer course multiplies your mistakes making it harder to compete against more accomplished racers.

So, depending on your skill level and physical fitness a short course may or may not be the best competitive advantage for you.

Race Results:

NASTAR racing will be available at the following local mountains: Wisp, Roundtop, Bryce, and Wintergreen.

Pow-Wow:

I thank those that took time to complete the adult racing survey. It has been very helpful and informative. The survey results were used to organize the events that you want to participate in.

Go Fast – Be Safe,

Mike "Geronimo" Lanier, VP Adult Racing

Cell: (404) 275-0888 • Email: racing@blackskiinc.org

Black Ski, Inc. Presents:

Annual Christmas Party

*When: Sunday, December 22, 2013
7:00 to 11:00 PM*

*Where: Blue Dolphin Seafood Bar
& Grill, Suite 201
1166 State Route 3 South,
Gambrills, MD 21054*

Cost: \$45.00 per person

*Contact: Vera Johnson, VP Hospitality
301-910-9403 | hospitality@blackskiinc.org*



Mail Order Purchase Information:

Tickets will be available by mail until December 17, 2013. All ticket orders received by mail without a self-addressed stamped envelope will be available for pick up at will call on the night of the event. Please write legibly and return this form with your Check or Money Order made payable to **Black Ski, Inc. AND a SELF ADDRESSED STAMPED ENVELOPE** to:

Black Ski, Inc. c/o Vera Johnson
25110 Highland Manor Court
Laytonsville, MD 20882

Please note on your check or money order: "**Black Ski Christmas Party**" | *Holiday Attire*

Name _____ Member Number (If Known) _____

Address _____

City _____ State _____ Zip Code _____

E-Mail Address _____

Home Phone _____ Work or Cell Phone _____

Please DO NOT send any ticket orders to Black Ski PO Box.

Finally... A SOLUTION TO
SPIDER VEINS, LEG PAIN AND
VARICOSE VEINS



You may have Spider or Varicose Veins if your legs have any of the following:

- Veins that are dark purple or blue in color
- Veins that appear twisted and bulging
- Thin, threadlike veins that lie close to the skin's surface
- Burning, tiredness, throbbing and muscle cramping in your lower legs
- Significant swelling and calf pain after sitting or standing for a long time
- Itching around one or more of your veins
- Restless feeling in the affected leg(s), especially when going to sleep



Lisa Alford, MD
Aesthetic Laser and Vein Center
Vascular Interventions
(301) 552-4300 • Lalford@aestheticlavc.com
12200 Annapolis Road, Suite #123
Glenn Dale, MD 20769



The BSI Experience at REI

A New Gear Demo & Exclusive Shopping Event

Sunday, November 17, 2013 • 5 – 7 pm

REI Tyson's Corner

8209 Watson Street • McLean, VA 22102

(703) 506-1938

Join Black Ski at REI Tyson's Corner for a private evening of all things ski and snowboard! You'll get to check out some of the newest apparel for the slopes, including ski/board-wear designed to help you when you're in trouble.

Find out from REI's Ski/Snowboard Specialists what essentials you will need – including the latest in transponder/transceiver and GPS technology – whether you're a skier or snowboarder on lift service runs or back country.

REI Apparel Specialists will then help you get outfitted for your next trip.

You'll get 20% off one full-priced REI-brand item!

RSVP TODAY!

<http://blackskiexperrei.eventbrite.com>

Whistler|Blackcomb is HUGE with more skiing acreage than Vail & Jackson Hole combined!



Join Black Ski for Whistler 2014 February 8 - 15, 2014

Whistler Blackcomb, British Columbia - Canada

PACKAGE COSTS \$1,600 - \$1,735

Whistler and Blackcomb are two side-by-side mountains which combined offer over 200 marked runs, 8,171 acres of terrain, 16 alpine bowls and three glacier and the PEAK 2 PEAK Gondola. Consistently ranked as North America's top ski and snowboard resort, Whistler Blackcomb welcomed the world in 2010 as a host venue for the Olympic and Paralympic Winter Games.

MOUNTAIN STATS

WHISTLER MOUNTAIN

Elevation 7,160 ft, **Skiable Terrain** 4,757 acres, **Terrain** Beg 20%, Int 55%, Adv 25%, **Trails** 100+, **Parks** 2, **Lifts** 20

BLACKCOMB MOUNTAIN

Elevation 7,494 ft, **Skiable Terrain** 3,414 acres **Terrain** Beg 15%, Int 55%, Adv 30%, **Trails** 100+, **Parks** 3, **Lifts** 17

Trip Package Includes:

- Round trip air transportation from BWI to Vancouver (baggage fees not included)
- Ground transportation from Vancouver Airport to Whistler - **Passport required**
- 5 day Lift Ticket for Whistler and Blackcomb Mountains (fewer days available)
- Club Party, Après Happy Hours, 1 - Fresh Tracks and Mountain Top Breakfast
- 7 Nights Lodging - Accommodation Options:

Delta Whistler Village Suites - 5 minute walk to lifts

- **1 Bedroom Suite - \$1,735/person** Double Occ- incl. 1 Bedroom with Queen Bed, 1 Full Bathroom, Full Kitchen, Gas Fireplace, Living Room with Sofa Bed, Full Kitchen, Washer and Dryer and Balcony
- **2 Bedroom Suite - \$1,600/person** Quad Occ- 2 Bedrooms (Bedroom 1 - 1 Queen, Bedroom 2 - 2 Twin Beds), 2 Full Bathrooms, Living Room with Sofa Bed, Full Kitchen, Dining Area, Gas Fireplace, Washer and Dryer and Balcony

Payment Schedule:

\$350 Deposit - July 23, 2013

\$350 - September 24, 2013

Balance Due - November 26, 2013

\$350 - August 27, 2013

\$350 - October 22, 2013

Trip Director - Michelle McLean (240) 461-1515 • **Assistant Trip Director** - Darlene Bing (202) 262-6424

Email whistler@blackskiinc.org • **website** www.blackskiinc.org/whistler.html

Please complete and submit with your trip payment form. **NOTE: Anyone attending a trip that runs a weekend or longer must be a club member.**

Black Ski at Whistler

February 8 - 15, 2014

Amount Enclosed \$ _____

Your Legal Name _____ **M/F** _____ **Birth Month/Day/Year** ____/____/____ (TSA Requirement)

Address _____ **City** _____ **State** _____ **Zip** _____

Telephone _____ **Home** _____ **Cell** _____ **BSI Member No.** _____ **E-mail** _____

Please check all that apply: **Air Seat from BWI?** ☐ Yes ☐ No **Ground Transfers?** ☐ Yes ☐ No **Lift Ticket Days** ☐ 3 ☐ 4 ☐ 5

Accommodations: Delta Whistler Village Suites ☐ 1 Bedroom Suite ☐ 2 Bedroom Suite

Roommate/Suite Mates _____

Do you mind opposite gender roommates? ☐ Yes ☐ No **Children?** ☐ Yes ☐ No

Emergency Contact Name _____ **Telephone** (____) _____

☐ **I Agree to the Black Ski's Terms and Conditions**

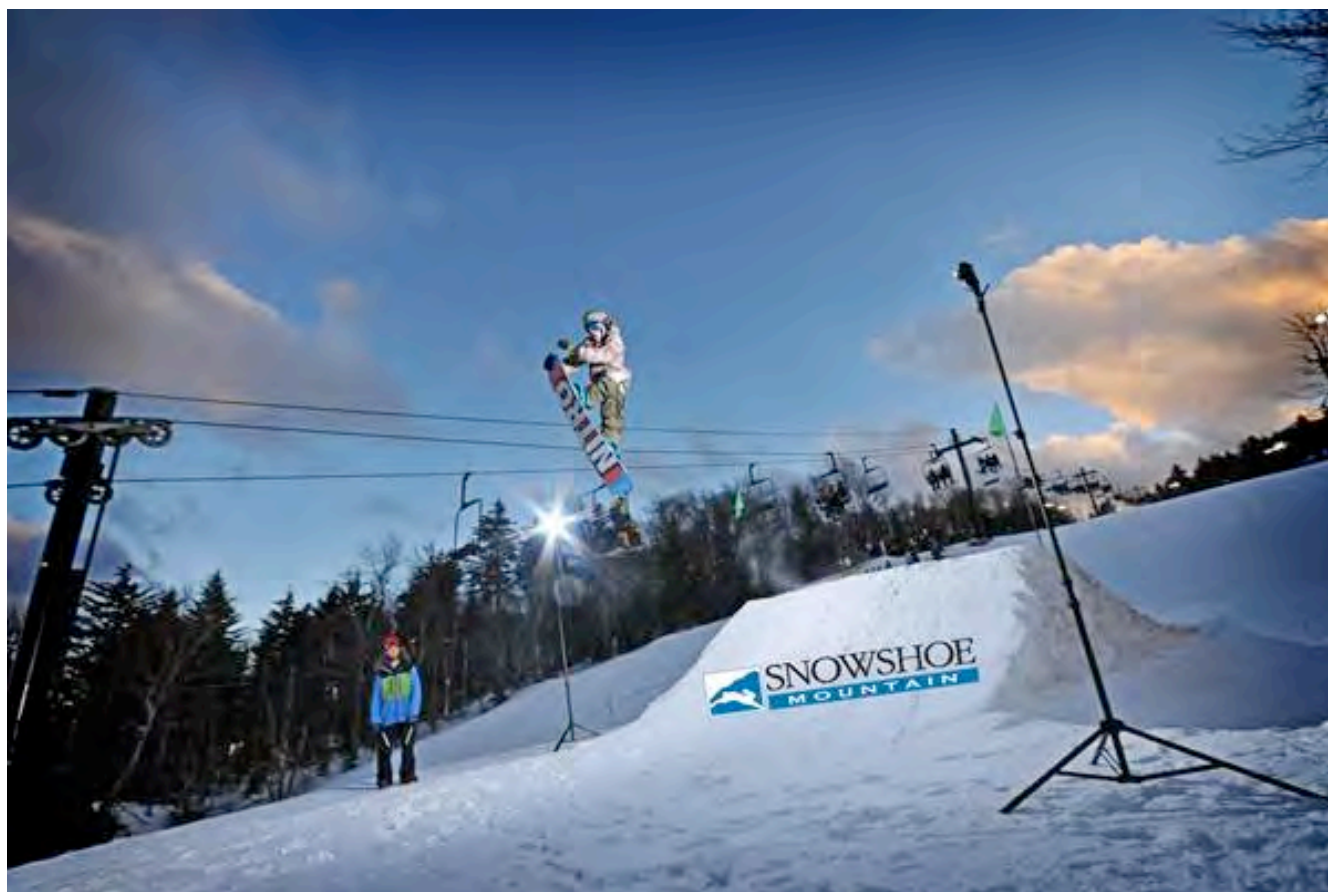
Mail this form with your payment to: Black Ski, Inc., P.O. Box 90762, Washington, D.C. 20090-0762

SAVE THE DATE

Join Black Ski Inc for

Snowshoe 2014

Snowshoe, WV
March 7 – 9, 2014



Trip Package Includes:

- **Lodging:** 2 nights at Mountain Lodge located in Village Central. Mountain Lodge features private adjacent parking lot, complimentary wi-fi and scenic overlooks. All condos are ski in/ski out and feature full kitchens and walkout balconies.
- **Transportation:** Round trip bus transportation from DC to Snowshoe
- Village shops, restaurants and the Split Rock Pool & Hot Tubs are nearby
- Youth package available

Trip pricing coming soon!

Please see www.blackskiinc.org/snowshoe.html for updated information.

Trip Director: Azara Turaki • (202) 630-9055
Assistant Trip Director: Lydia Hunt • (301) 676-3214
Email: snowshoe@blackskiinc.org

Snowshoe Mountain Stats

3 ski areas
180" avg annual snowfall
4,848' summit elevation
1,500' vertical drop
Longest run: 1.5 miles
57 trails
TERRAIN:
42% easier
30% more difficult
23% most difficult
5% extremely difficult
11% freestyle)
14 lifts including 3 high speed

BIG SKY RESORT – THE BIGGEST SKIING IN NORTH AMERICA!



Spring Fling 2014 @ Big Sky, Montana

Saturdays, March 15 – March 22, 2014

Package Price: \$1,782 - \$1,976

Trip Includes (Additional Costs: Airline Baggage Fees and Possible Airline Fuel Surcharges)

- Round trip air to Bozeman, MT Airport - from BWI or DCA-National via Delta
- Ground transportation to/from Bozeman Airport to the Big Sky - a one hour drive
- Five-day Lift Ticket includes 4-day ticket for Big Sky and 1-day lift ticket for Moonlight Basin
- Welcome Party & Private Black Ski Dinner

Lodging Option 1 - 7-nights lodging at the Luxurious Summit at Big Ski Hotel - **\$1976**

A Ski-in/Ski-out location in the heart of everything

- » An elegant Euro-Western style property with one King or two Queen beds
- » Includes a full daily breakfast, Private fitness center and outdoor hot tubs

Lodging Option 2 - Seven nights lodging at the Big Horn Condo – *limited availability* - short walk to puma lift (Breakfast NOT included) – **\$1782**

Lodging Option 3 - Seven nights at the Huntley Lodge - **\$1891** – *limited availability*

- » A standard hotel rooms with 2 Queen beds, includes a full daily breakfast

Optional Items:

- » 6-day lift ticket +\$54; 4-day lift ticket -\$20; (Sorry, no senior rates)
- » Upgrade Big Sky lift ticket to a two mountain lift ticket (Big Sky and Moonlight) +\$26 per day, on-site

Contact: Trip Director Tanya Jones H-301-680-8926 - Tanyalj20904@yahoo.com

Assistant Trip Director Mike Saizan H-301-297-7434 – C-301-785-2964 – bsi.atd@verizon.net

Sign Up Online: www.blackskiinc.org/springfling.html



Moonlight Basin

Mountain Stats

5,532 Skiable Acres

4,350 Vertical Drop

Over 220 Runs

Longest Run Six Mile

- 3632 skiable acres at Big Sky; 1900 skiable acres at Moonlight Basin Resort
- Expansive terrain for all levels; uncrowded, wide-open spaces
- Free guided mountain tours daily
- Guided Zip Line Tours, Snowshoeing and Snowmobiling available (extra cost)
- Basecamp to Yellowstone National Park

A full service resort with all the amenities you could ask for!

Payment Schedule

July 23, 2013	\$250 Deposit*	October 22, 2013	\$300	January 25, 2014	Balance Due
August 27, 2013	\$300	November 26, 2013	\$300	*Non-refundable after Sept 1, 2013	
September 24, 2013	\$300	December 17, 2013	\$300		

Please complete and submit with your trip payment form. **NOTE:** Anyone attending a trip that runs a weekend or longer must be a club member.

Black Ski Spring Fling at Big Sky

March 15- 22, 2014

Amount Enclosed \$ _____

Your Legal Name _____ **M/F** _____ **Birth Month/Day/Year** ____/____/____ (TSA Requirement)

Address _____ **City** _____ **State** _____ **Zip** _____

Telephone _____ **Home** _____ **Cell** _____ **BSI Member No.** _____ **E-mail** _____

Please check all that apply: **Air Seat from BWI?** ☐ Yes ☐ No **Air Seat from DCA?** ☐ Yes ☐ No ☐ No Air Seat (-\$658)

Ground Transfers? ☐ Yes ☐ No **Lift Ticket Days** ☐ 4 (-\$20) ☐ 5 ☐ 6 (+\$54) ☐ No Lift Ticket (-\$276) **Trip Insurance?** ☐ Yes ☐ No

Accommodations: The Summit Hotel ☐ Deluxe Studio ☐ 1 Bedroom Suite ☐ 2 Bedroom Suite

Double Room - Double Occupancy ☐ 2 Queen Beds or ☐ 1 King Bed (\$1976/person – standard package)

Private Room - Double Occupancy ☐ 2 Queen Beds or ☐ 1 King Bed (Single Occupancy add \$804)

Big Horn Condo - Quad Occupancy ☐ 2 bedroom – (\$1782/person) for four - Must consult with Trip Direction for this arrangement

Huntley Hotel ☐ Standard Room - 2 Queen Beds – (\$189/person) - Must consult with Trip Director for this arrangement

Roommate/Condo Mates _____

Do you mind opposite gender roommates? ☐ Yes ☐ No **Children?** ☐ Yes ☐ No

Emergency Contact Name _____ **Telephone** (____) _____

☐ **I Agree to the Black Ski's Terms and Conditions**

Mail this form with your payment to: Black Ski, Inc., P.O. Box 90762, Washington, D.C. 20090-0762



HUGE BLACK SKI MEMBERSHIP SALE!!

**GOT FAMILY MEMBERS & FRIENDS
WHO AREN'T BLACK SKI MEMBERS YET?**

We Are REALLY Cutting NEW Membership Prices
AGAIN THIS YEAR!!!!

September 1 - December 23, 2013

October - December

NEW Individual \$50 NOT \$55

NEW Families \$85 NOT \$90

NEW Youth \$10 NOT \$15

Pricing Expires December 23, 2013



Sponsor gets \$5.00 certificate for use on Black Ski activities for each new Lifetime, Individual or Family membership.

• • • Member Drive Sign Up Incentive • • •

**The current member who signs up the MOST NEW members* will win a
\$100 Black Ski Gift Certificate good toward any Black Ski Trip, Event or Merchandise!**

*** Fine Print: In order to qualify you must sign up a minimum of FIVE (5) new Individuals or Families OR ONE (1) New Lifetime Member OR TWENTY (20) New Youth Members during THIS membership drive. Your Name MUST be listed as sponsor on the Sign Up Form to receive credit.**



**GIVE THE GIFT OF THE GREAT TRIPS...PARTIES...& FUN!
SPREAD THE WORD! WWW.BLACKSKIINC.ORG**

ADVANCED PLANNING MEETINGS

**1ST MONDAY OF EACH MONTH @ 7 PM
TURNER MEMORIAL AME CHURCH**

7201 16TH PLACE, HYATTSVILLE, MD

***Next Meeting
December 2***

**Contact Vicki McGill
for more information**

202.526.6246

advanceplanning@blackskiinc.org

Trip Directors needed.

Training Available

Now is a great time to GET INVOLVED!

Get It While It's Hot!

***Get Hot Wax Delivered to you via
email before it hits the streets!***

By getting **HOT WAX** delivered to your email box

You get the latest news even earlier

You get the full effect of the color layout,

and best of all

You'll be able to save the full color

PDF version for future reference.

To get ***e-HOT WAX***

Email newsletter@blackskiinc.org

Include your name, email address and membership number

DO IT TODAY!

Note: You'll need Adobe Acrobat Reader to open the document.

You can download the software-free of charge-
by visiting www.adobe.com.

ADVERTISE YOUR SERVICES IN HOT WAX

HOT WAX is distributed monthly to 700 Black Ski members located throughout the DC Metropolitan Area and beyond. By advertising your products and services, you can effectively reach a select and dynamic group of civic-minded professionals with a variety of sporting and social interests.

ADVERTISING RATES

Full Page	Half Page	1/4 Page	1/8 Page
8 1/2 X 11	8 1/2 X 5 1/2	4 1/4 X 5 1/2	2 1/4 X 4 1/8
\$50.00 per issue	\$35.00 per issue	\$20.00 per issue	\$15.00 per issue
\$270.00 six issues	\$190.00 six issues	\$110.00 six issues	\$80.00 six issues

***Deadline for Ad Submission is the 15th of each month for
inclusion in the following month's Hot Wax***

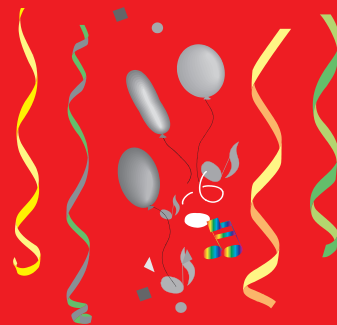
For details contact:

email communications@blackskiinc.org



Happy Birthday

November Birthdays!



Allen Alexandra
Josita E Allen
Amel Anderson
Rollen L Bard
Virgie E Baskerville
Edith Bloodworth
Timothy D Brooks
Marshall A Brown
J Willie Darasaw
Jacqueline G Daughtry-Miller
J Terry Davis
Gertrude E Edwards
Neval Featherstone
Priscillia Fearington
Tobias Felton
Alvin A Frazier
Kay Hairston

Deanna A Hence
Deborah L Henry
Diane Herndon
William Huggins
William H Hunter
Deborah E Jenkins
Skyler Lampkin
Gwendolyn A Lindsay
Phyllis A Love
Diane Luallen
Charles H Martin
Vicki R McGill
Kimberly J Miller
Kenneth Moris
Delores Mounsey
Freeman Magruder Murray
Marie Murray

Bernard Mustafa
Louis Jerome Price
Gloria E Savoy
Oliver E Silver
Leonard Stephens
Willa Stokes
Sean S Thomas
Catherine Thomas-Pinkney
Diana Thompson
Jimmy Thorne
Gerald F Washington
Roland T Watson
Eugene Webb
Marian Webber
Renee Y Welch

Black Ski Inc., Trip Payment Form



Anyone attending a trip that runs a weekend or longer must be a club member. Please use one form for each trip you are paying for as each sheet will be forwarded to the trip director. We cannot duplicate the information you provide as trip directors do not see your check. Each payment should be accompanied by a trip payment form.

Trip Name _____ **Trip Date** _____ **Amount Enclosed \$** _____

Indicate Ski Package _____ **Lessons?** Yes ☐ No ☐ **Rentals?** Yes ☐ No ☐

Your Legal Name _____ **M/F** _____ **Birth Month/Day/Year** ____/____/____ (TSA Requirement))

Note: **Airline tickets will be issued in the name you use. Please be consistent** Airfare Charge option? ☐ Yes ☐ No

Address _____ **City** _____ **State** _____ **Zip** _____

Telephone _____ **Home** _____ **Work BSI Member No.** _____ **E-mail** _____

Please check all that apply: Air Option? ☐ Yes ☐ No Departing Airport ☐ BWI ☐ Dulles ☐ National

Ground Transfers? ☐ Yes ☐ No Accommodations ☐ Hotel Single/Double ☐ 2 Bedroom ☐ 3 Bedroom Condo

Roommate _____ **Condo Mates** _____

Lift Tickets 3 days ☐ 4 ☐ 5 ☐ 6 ☐ **Do you mind opposite sex condo mates?** ☐ Yes ☐ No

Children? ☐ Yes ☐ No **Is your child:** ☐ Under 5yrs ☐ 6 - 15 yrs ☐ 16 - 18 yrs

Emergency Contact Name _____ **Telephone ()** _____

Mail this form with your payment to: Black Ski, Inc., P.O. Box 90762, Washington, D.C. 20090-0762

BLACK SKI, INC. TERMS & CONDITIONS STATEMENT



Effective 9/1/00 Anyone going on a weekend or longer trip must be a club member.

An initial deposit per person is required to confirm your reservation. A non-refundable deposit fee of up to \$250 will be assessed if cancellation is received after date specified on trip flyer.

PAYMENTS

The payment schedule outlined on trip flyer must be adhered to unless arrangements are made with the Trip Directors. Failure to receive payment by date specified may cause loss of reservation (see cancellation for non-payment below). Monies received within thirty (30) days of the trip date will only be accepted in the form of a money order, certified check or cashier's check. No cash or personal check transactions will be accepted.

CANCELLATION

(a) Request for cancellation: A request to cancel from a trip must be in writing and directed to the Trip Director. The participant by voluntarily requesting to be canceled from the trip will be assessed the non-refundable deposit fee (as specified on trip flyer) plus any payments that have been made to vendors on his/her behalf. (b) Cancellation for non-payment: The participant is required to adhere to the trip's published payment schedule. If adherence is to the contrary, you will be notified in writing after you have missed two consecutive scheduled payments. The participant will be allowed fifteen (15) days to bring his/her scheduled payment plan up-to-date. If payment is not received after notification, all monies may be returned to the participant minus the nonrefundable deposit fee plus any payments that have been made to the vendors on his/her behalf.

REFUNDS AND TRANSFERS

Black Ski Inc. will make all attempts to refund participants whenever possible. Refunds will be made only after suitable replacements are found. Participant transferring funds from one trip to another must do so in writing and have authorization from both trip directors.

TRIP INSURANCE

The purchase of trip cancellation/interruption insurance is recommended and is usually available for a nominal fee.

ROOM ASSIGNMENT

Black Ski will attempt to honor all requests but reserves the right to make changes.

SKIER'S RESPONSIBILITY CODE

1. Always stay in control and be able to stop or avoid other people or objects.
2. People ahead of you have the right of way. It is your responsibility to avoid them.
3. You must not stop where you obstruct a trail or are not visible from above.
4. Whenever starting downhill or merging into a trail, look up hill and yield to others.
5. Always use devices to help prevent runaway equipment.
6. Observe all posted signs and warnings. Keep off closed trails and out of closed areas.
7. Prior to using any lift, you must have the knowledge & ability to load, ride and unload safely.

Black Ski, Inc. is not liable for irregularities, loss, injury or damages to persons and/or property during the trip. The participant accepts that there are risks inherent in skiing and adventure activities and hereby releases Black Ski, Inc. from any and all liabilities.

I accept, acknowledge and understand the Terms & Conditions Statement stated above.

Signature_____ Date_____

MEMBERSHIP APPLICATION/RENEWAL/INFORMATION UPDATE FORM



BLACK SKI, MORE THAN JUST A SKI CLUB SEPTEMBER - DECEMBER MEMBERSHIP SALE

Please Print

First _____ Middle Initial _____ Last _____

Address _____

City _____ State _____ Zip Code _____ E-Mail Address _____

Telephone Number _____ Home _____ Work _____

Date of Birth _____ M/F _____ Member Number _____

Spouse First _____ Middle Initial _____ Last _____

Date of Birth _____ Member Number _____

Child Name _____ Date of Birth _____

Child Name _____ Date of Birth _____

New Members			Annual Renewal Rates	Lifetime Membership
	Regular	Oct. - Dec. 23		
<input type="checkbox"/> Individual	\$55	\$50	<input type="checkbox"/> Individual \$30	<input type="checkbox"/> \$500 Flat Rate
<input type="checkbox"/> Family	\$90	\$85	<input type="checkbox"/> Family* \$45	
<input type="checkbox"/> Youth	\$15	\$10	<input type="checkbox"/> Youth \$10	

* Family Includes parent(s) & children 7 - 18, No charge for children under 7 yrs. if a parent is a member

☐ Conversion from Individual to Family \$55

Renewal after more than 18 months lapse - Individual \$40 Family \$55

Consider making a generous donation to our Youth Program \$ _____

By joining Black Ski, Inc., as a member, I hereby release Black Ski, Inc., its officers, directors, employees, leaders and volunteers from any liability, damages or claims arising from injury or property damage sustained by me related to any Black Ski, Inc. activity or event. Total Fee Enclosed \$ _____

I give permission for my name to be submitted to NBS sponsor list. Yes ☐ No ☐

I would like to receive the *Hot Wax* Newsletter and other Black Ski notices via ☐ Email ☐ US Mail

Signature (Not Valid Unless Signed) _____ Date _____

Sponsor's Name _____ Date _____

Sponsor gets \$5.00 certificate for use on Black Ski activities for each new Lifetime, Individual or Family membership.

Indicate the Committee on which you would like to participate by checking the appropriate box(es)

☐ Advance Planning ☐ Youth ☐ Communications ☐ Fund Raising ☐ Business/Computer Support
☐ Hospitality ☐ Budget & Finance ☐ Membership ☐ Other (Specify) _____

Be sure you've completed the form properly and have included the total amount due.

Send check or money order to:

Membership Application/Renewal, Black Ski, Inc., P.O. Box 90762, Washington, D. C. 20090-0762



Black Ski, Inc.

P.O. Box 90762

Washington, D.C. 20090-0762

Address Correction/Forwarding Service Requested

STD
US POSTAGE PAID
WASHINGTON, DC
PERMIT NO. 884

HOT WAX - The Official Publication of Black Ski, Inc

www.blackskiinc.org • www.blackskiinc.net • www.blackskiinc.com • 301.231.3900

Yahoo Group: <http://sports.groups.yahoo.com/group/blackskiinc/>

Twitter: @blackskiinc **Facebook:** Black Ski Inc.

Black Ski, Inc. Executive Committee

President	Vicki McGill	202.526.6246	president@blackskiinc.org
Secretary	Alisa Dotson	301.438.0726	secretary@blackskiinc.org
Advanced Planning	<i>Vacant</i>		advanceplanning@blackskiinc.org
Administrative Support	Darlene Bing	202.583.4504	adminsupport@blackskiinc.org
Finance	Valerie Payton - Acting	301.221.0212	finance@blackskiinc.org
Fund Raising	Valerie Payton	301.221.0212	fundraising@blackskiinc.org
Hospitality	Vera Johnson	301.902.9403	hospitality@blackskiinc.org
Membership	<i>Vacant</i>		membership@blackskiinc.org
Racing	Michael Lanier	404.275.0888	racing@blackskiinc.org
Communications	<i>Vacant</i>		communications@blackskiinc.org
Youth	Beverly Johnson Broady	301.249.5955	youth@blackskiinc.org

Board of Directors

Russell Bacon
Betty "BJ" Jones
Lenny Milner*

Larry Coleman
Kathy Lambert, Secretary
Ken Moris, Chairman
Alease "Christy" Wright

Ken Ford
Vicki McGill
Kendall White

*Furman Marshall**
Mickey Diggs* (Deceased)

*Donny Claytor**
Ray Mott* (Deceased)

*Jim Thorne**
* denotes Founding Members
- *Italics* denotes Inactive Members

Communications Team

Darlene Bing, Communications Coordinator
Vicki McGill, Layout & Design