

HOT WAX



Vol. 41 No. 7

The Official Publication of Black Ski Inc.

July 2013

From the Desk of the President

Crab Feast a Major Success! Thank you to everyone who attended our annual crab feast and especially to Darlene Bing and her amazing "Crew" who made it all happen seamlessly.

2014 NBS Summit As communicated at our June General Body Meeting, via email and on our Website Black Ski is not planning a trip to the upcoming Summit at Sun Valley. Please see full details about this decision on page 3. Alternatively we have planned a great trip to Whistler - February 8 - 15, 2014. Please see page 10 for sign up information about this trip.

Finance Vice President We are currently searching for a club member to join our Executive Committee in the capacity of Finance Vice President. This is a vital leadership role and needs to be filled quickly to maintain our financial processes. Prior experience is not necessary but the ability to attend monthly meetings and enter financial data on a weekly basis is required. Training will be provided. Please contact me for additional information or to express interest in the position at president@blackskiinc.org or 202-526-6246.

July Meeting - Ice Cream & Pizza Social with Games! Our July 23rd General Body Meeting will be a fun-filled evening of sundae making, pizza and games infused with information about our upcoming activities. If you have a great game or two feel free to bring it with you and to bring a friend or two.

Black Ski - Going Green Your Executive Committee is leading an initiative to make Black Ski "Greener." We are working toward a goal of phasing out the printed version of the Hot Wax newsletter by **January 2015** and providing each monthly issue by email and on our website. If you would like to start receiving the Hot Wax Newsletter via email please email newsletter@blackskiinc.org and provide your name and we will switch you to the *e-Hot Wax*. To serve our members without email access a small number of newsletters will still be printed.

New Trips Added - Whistler and Spring Fling at Big Sky are now on sale. We are also going Whitewater Rafting and Ziplining. Don't miss out...sign up TODAY!

Black Ski Racing Survey - Tell us your racing interests, we're aiming to tailor our program to member's needs. Thus far 20 responded. Please complete the survey on our website today.

—Vicki R. McGill, Black Ski President

VOLUNTEERS NEEDED

The Black Ski Inc. Executive Committee has the following Vice President positions open:
MEMBERSHIP • COMMUNICATIONS
ADVANCE PLANNING • FINANCE

Please consider volunteering your talents to help **YOUR** ski club continue to move forward. Contact Vicki McGill to discuss any of these positions at president@blackskiinc.org

CONDOLENCES

The Board of Directors, Executive Committee and Members of Black Ski Inc. would like to express condolences to Dwayne Golden and his family on the passing of his mother Ruth E. Golden and to Sean Thomas and his family on the passing of his mother Joy Holness.

General Body Meetings

July 23, 2013 - Ice Cream & Pizza Social with Games

**19th Street Baptist Church,
4606 16th Street, N.W., Wash., D.C.
Contact membership@blackskiinc.org**

August 27, 2013

General Body Meetings are held the fourth Tuesday of each month

What's Inside:

Upcoming Black Ski Events	4 - 5, 7 - 11
TeamBSI 2013 Cycling Schedule	2
BSI's Participation in Summit/AMCC 2014	3
Racer's Corner	6
July Birthdays	13
BSI Forms	13 - 15

Visit www.blackskiinc.org/documents.html for our Bylaws and Members Bill of Rights

Black Ski Event Calendar

Dates	Event	Location	Trip Directors/POC	Contact Number
July				
14 - 16	BSI Annual Golf Outing	Carroll Valley at Liberty Golf Course	Bill Wyatt	golf@blackskiinc.org
24	Ice Cream & Pizza Social w/ Games	19th St. Baptist Church	Vicki McGill	(202) 526-6246
August				
8 - 11	NBS Eastern Region Summerfest	Boca Raton, FL	Tammy Madison	(301) 346-3066
17	Whitewater Rafting & Ziplining Adventure	Harpers Ferry Adventure Center Purcellville, VA	Lydia Hunt Terry Anderson	(240) 393-1390 (862) 668-1443
September				
24	Black Ski - Ski Expo	19th St. Baptist Church	Vicki McGill	(202) 526-6246
December				
7 - 14	Early Season Warm Up	Keystone Resort Keystone, CO	Vicki McGill Alisa Dotson	(202) 526-6246 (301) 641-5127
January 2014				
18 - 25	Sundance Film Festival	Park City Mountain Resort Park City, Utah	Vicki McGill Darlene Bing	(202) 526-6246 (202) 583-4504
February 2014				
8 - 15	Black Ski at Whistler A Summit Alternative	Whistler Blackcomb British Columbia	Michelle McLean Darlene Bing	(240) 461-1515 (202) 583-4504
March 2014				
17 - 24	Black Ski Spring Fling	Big Sky Ski Resort Big Sky, MT	Tanya Jones Mike Saizan	(301) 680-8921 (301) 297-7434

Visit www.blackskiinc.org for the latest updates on our event schedule



2013 TEAM BSI Cycling Schedule

Contact Jack Gardner for more information or to join the mailing list

301-627-5128 • JGardner2@aol.com

Date	Event	Location	Terrain	Riders	Contact
JULY					
Sun 7/7 7:30 am	BSI Crab Feast & Ride	Sandy Pt State Park, Annapolis, MD	Paved Trail, Roads		Jack 301-627-5128 Les 678-938-3189 LesBroadway@gmail.com
Sat 7/13 8:30 am	Western MD Rail Trail	Interstate 70 & Route 522, Hancock, MD	Paved Trail 21 miles RT	All Levels	Sharon 202-256-8275 Eileen 202-549-1475
Sun 7/14 7 am	American Cancer Society Bike-a-Thon	Ben Franklin Bridge, Philadelphia PA	21-100 mi routes 4 different starting points	All Levels	http://acsbike.org 800-ACS-2345
Sat 7/20 7:30 am	B&A Trail	Jones Station Road Park & Ride, Ritchie Hwy, Arnold, MD	Paved Trail Ride out @ 8am	All Levels	Thomasine 301-345-1641 202-247-0955 (cell)

Legend:

- A+ rider cycles 50 or more miles at a pace of 18+ average miles/hour
- A rider cycles 50-90 miles at 15-20 average miles/hour
- B rider cycles 30-65 miles at 12-16 average miles/hour
- C rider cycles 20-50 miles at 10-14 average miles/hour
- D rider cycles 10-15 miles at a pace of up to 10 miles/hour



Full Schedule available at www.blackskiinc.org/cycling.html



Black Ski Inc. Participation in Summit/AMCC 2014

June 25, 2013

Dear Black Ski Members,

After a great deal of discussion with our club's leadership and other club presidents, contemplation and research we have reached the painstaking decision to **not plan a trip to the 2014 NBS Summit/AMCC.**

At issue is the lodging contract that the NBS has negotiated with Sun Valley which required a non-refundable deposit of \$100 per room, e.g., a 2 bedroom condo would require a deposit of \$200 which would be lost if we had to return the room and the funds could not be applied to the remaining lodging block. In checking with various travel professionals within the ski industry these are not the normal stipulations in Sun Valley contracts and lodging deposits are normally transferable to other rooms in the lodging block. Having fiduciary responsibility over Black Ski's finances we could not accept this stipulation in the contract and risk the possibility of losing hundreds of dollars in lodging deposits.

We had hoped to be able to resolve the Lodging Contract issue and to that end made a request to have our NBS Eastern Region leadership schedule a conference call with the Eastern Region presidents two weeks ago - as this region does bring the greatest number of attendees to Summit and Black Ski members make up a large number of those participants - but the request was not honored and I received only an acknowledgement that my request had been received but there was no follow up or call scheduled. Additionally, no one from our national leadership appears willing to request that the mountain change the contract to their standard contract language which allows for cancellations within a certain period of time and the submitted deposit for those rooms being transferred to the remaining rooms.

This will not be the first instance of a ski club not attending Summit due to problems with the planning of the event. Hopefully next year we will not run into insurmountable issues and will be able to plan a trip to Summit 2015 at Aspen/Snowmass.

In place of the trip to Summit/AMCC 2014 **we are planning a trip to Whistler-Blackcomb, BC**, which received a great deal of recommendations from several members. The cost for the trip will be comparable to estimated cost for the Summit and will provide accommodations in closer proximity to the slopes and easier travel than to Sun Valley. The planned dates are **February 8 - 15, 2014**, which will allow any members who would like to also attend Summit later in the month the opportunity to do so.

Of the 100+ people who traveled to Summit 2013 with us, 14 signed up for the 2014 Summit Early Registration Incentive program. To accommodate their attendance of the Summit we will assist them in contacting another Eastern Region club that will planning a trip to Summit.

We will do our best to disseminate this information with our members at our monthly meetings, on our website, via email and in the upcoming issues of the Hot Wax Newsletter.

Thank you for all of your suggestions and input.

Vicki R. McGill
President
Black Ski Inc.
president@blackskiinc.org
www.blackskiinc.org

More than just a Ski Club!

Follow us on Facebook and Twitter @blackskiinc
www.blackskiinc.org



Trips Available to Black Ski Members

+



BRSC Western Carnival - Vail, CO

February 1 - 8, 2014

AAA Four-Diamond ski resort with ski-in/ski-out hotel with its sensational spa and après-ski at the Vail Cascade Hotel & Spa by night. Mark your calendar for an exclusive week filled with outstanding service and luxury both on and off the slopes!

Package \$1520 + Air/Person Double Occupancy

Eurofest 2014 - Cortina, Italy

March 7 - 15, 2014

The 2014 Eurofest destination is Cortina, Italy. This is a very popular trip to Italy's northern Dolomite Mountain region, where one of the premier attractions is skiing the challenging but fun Sella Ronda Circuit. Choice of 1 of 4 Hotels - Rated 3+ to 4+ Stars. Air from BWI or IAD.

Packages: \$2,185 - \$2,505 / Person Double Occupancy

For More information Contact Vicki McGill
president@blackskiinc.org

Laguna Condo Puerto Rico

Condo Plus Office

Avenida Laguna
Carolina, PR 00979

lagunacondopr.com

(301) 787-1333

Chico Redicks

Finally... A SOLUTION TO
SPIDER VEINS, LEG PAIN AND
VARICOSE VEINS

aesthetic
LASER AND VEIN CENTER



You may have Spider or Varicose Veins if your legs have any of the following:

- Veins that are dark purple or blue in color
- Veins that appear twisted and bulging
- Thin, threadlike veins that lie close to the skin's surface
- Burning, tiredness, throbbing and muscle cramping in your lower legs
- Significant swelling and calf pain after sitting or standing for a long time
- Itching around one or more of your veins
- Restless feeling in the affected leg(s), especially when going to sleep



Lisa Alford, MD
Aesthetic Laser and Vein Center
Vascular Interventions
(301) 552-4300 • Lalford@aestheticlavc.com
12200 Annapolis Road, Suite #123
Glenn Dale, MD 20769

10.13



JOIN BLACK SKI FOR NBS EASTERN REGION Summerfest August 8 - 11, 2013 BOCA RATON, FL

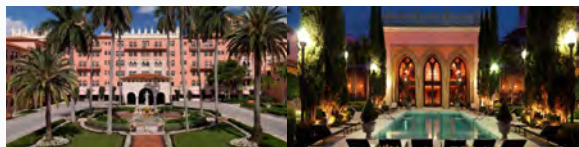
Boca Raton Resort & Club (A Waldorf Astoria Resort)

Great Fun in the Sun, Parties, Happy Hours, Shopping, Golf & More

Immerse yourself in this legendary resort and club

- Two 18-hole championship golf courses, designed for both novices and veterans
- Forbes Four-Star Spa Palazzo, offering an extensive menu of treatments and therapies
- Approximately 146,000 square feet of function space, ideal for any occasion
- World-class restaurants and dining options, featuring cuisines to suit any palate
- 30 Tennis courts, with professional instruction
- Three state-of-the-art fitness centers, in a variety of settings
- Half-mile stretch of private Atlantic oceanfront, offering a variety of water and beach activities for all.
- Seven swimming pools, offering the perfect opportunity for relaxation and refreshment
- 32-Slip, full-service marina, perfect for boat and watersports lovers
- Exclusive onsite shopping, including a collection of eclectic shops and boutiques

**Space is Still available
Full Payment Due Now**



Lodging Package Options:

Beach Club Standard Rooms

\$390 (Double Occupancy)

\$345 (Triple Occupancy)

Ocean Vista Rooms

\$465 (Double Occupancy)

\$390 (Triple Occupancy)

Additional Nights Available

Website: www.bocaresort.com

Great prices on Air fares to Fort
Lauderdale or West Palm Beach.
(Approx 28 miles from resort. Not Included)

*** Ground Transportation Pricing TBA**

FUN FUN AND MORE FUN...

**Trip Director: Tammy Madison
301-346-3066**

email: summerfest@blackskiinc.org

Sign Up Online: www.blackskiinc.org/summerfest.html

7813

Please complete and submit with your trip payment form. NOTE: Anyone attending a trip that runs a weekend or longer must be a club member.

NBS-ER Summerfest in Boca Raton August 8 - 11, 2013

Amount Enclosed \$ _____

Your Legal Name _____ M/F _____ Birth Month/Day/Year ____/____/____ (TSA Requirement)

Address _____ City _____ State _____ Zip _____

Telephone _____ Home _____ Cell _____ BSI Member No. _____ E-mail _____

Please check all that apply: Ground Transfers? ☐ Yes ☐ No

Accommodations: ☐ BEACH CLUB STANDARD ROOM ☐ OCEAN VISTA ROOM | ☐ DOUBLE OCCUPANCY ☐ TRIPLE OCCUPANCY

Roommate _____ Do you mind opposite gender roommates? ☐ Yes ☐ No Children? ☐ Yes ☐ No

Emergency Contact Name _____ Telephone (____) _____

☐ I Agree to the Black Ski's Terms and Conditions

Mail this form with your payment to: Black Ski, Inc., P.O. Box 90762, Washington, D.C. 20090-0762

The Racer's Corner

Upcoming Events: We have a bunch of *exciting, new* and *historic* activities planned. Some highlights are:

- July 2013 – Ski Fitness Evaluation Session with Dryland Training Instruction
- Summer/Fall 2013 – Rollerblade Slalom Training
- December 7-14, 2013 – Early-Out Trip - Race Clinic & Race at NBS Keystone, Colorado
- Winter 2014 – Local Race Training
- Winter 2014 – Regional and/or National NASTAR Championships

Racer Profile: Ellen Miller

What is your nickname?

El-Boogie

What is your favorite mountain?

Whistler/Blackcomb (Canada)

How long have you been skiing?

Started in 1989. First skied at 7-Springs, but spent most of my beginner trips at Ski Liberty after work.

What year did you ski the most and how many days on snow was it? 2010/2011 season – skied 84 days

What brand, model, and length ski do you race on? My (faithful) Head Super Shapes, 165 cm

Which NBS Summit/AMCC did you enjoy the most, and why?

I enjoyed my first AMCC the most; Heavenly 1990. I was overwhelmed to realize and to experience so many Blacks skiing. And the theme parties were off the chart. I have not missed a Summit/AMCC since.

Racer Profile – Vincent Whitehurst

What is your nickname? Vince

What is your favorite mountain?

Steamboat (US) and Zugspitze (Germany)

How long have you been skiing? On and off since 1989, started ski racing in 2011

What year did you ski the most and how many days on snow was it? 5 straight days at the 2011 NBS Summit in Steamboat

What brand, model, and length ski do you race on? Volkl RTM 80, 171 cm

What was your best race finish? Bronze NASTAR medal at Seven Springs (fastest time for my group)

What has been your most memorable race experience?

Completing my very first race in Steamboat in 2011 and the fellowship with the BSI race training group at Liberty Mountain

Which NBS Summit/AMCC did you enjoy the most, and why?

Steamboat 2011 my very first summit where I met many new friends and fellow skiers that love the sport! We skied and partied to exhaustion. It was awesome baby with a capital A!!

What little known fact about yourself would you like to share?

Hampton University Electrical Engineer and Masters Degree in information system management from Central Michigan University. I'm a retired Army Officer (LTC), Ranger, Airborne, and Combat Vet with 23 years of service. I have 2 kids who



both participated in the BSI youth program and as a result my 16 year old son is an advanced snowboarder and my 14 year old daughter is an intermediate skier. I'm a golfer, bike rider and a member of the Down Riggers Fishing Club. I also coach a little league football team and have 3 consecutive championship trophies and a flawless record from 2009 to 2011.

What BSI events do you normally participate in? Christmas party, General Body meetings, Ski Swap, Eastern Regionals, Crab feast, NBS Summit and Liberty Mountain Race training.

Fact Check: *In ski racing, what is faster – a straight line from gate to gate or a curve?* In a two dimensional plane the fastest way between two points is to go in a straight line. In a three dimensional world on an inclined plane going from point to point (ski racing) the physics are a bit different. It is actually faster to take a curved path that is determined by the fall line (hill) from gate to gate. The diagram below (source: www.youcanski.com) gives you an idea of the fastest path through a series of gates on a basic hill.

Take note that in ski racing you are combining the physics and dynamics of the undulating slope, the placement of the gates, the flexing of your skis, your body dynamics, the center of gravity of your body, velocity, state of the snow, and condition of the path (ruts). This is why ski racing is such a unique and difficult sport to master. Time in the gates and on varied terrain help inform racers on what to intuitively do when speeding down the hill during live race conditions.



Race Results: Please check out the end of season NASTAR results for the Black Ski NASTAR Race Team online at <http://skiracing.nastar.com/index.jsp?pagename=team&teamtype=club&teamname=Black+Ski>.

We finished 133 out of 1,729 teams nationwide for the 2013 season. There are 117 racers identified with our team. If your name and/or results are missing, please contact Mike Lanier, VP Adult Racing at nbs@mikelanier.com so we can get you onto our roster. This was our best finish since finishing 83rd out of 1,845 teams back in 2008. Come race with us next season and help us improve our national ranking. All levels of skiers and all age groups can participate and compete for our team at any NASTAR mountain.

Pow-Wow: As the new Vice-President of Adult Racing I would like to thank my predecessor, Debbie Davis for all that she accomplished. With your help I hope to continue the excellence that Black Ski Incorporated Adult Racers have exemplified over the past years. Current, past and future racers are asked to complete an online survey at: <http://www.surveymonkey.com/s/L7M7HPH>. This survey will help the Adult Race Committee organize the events that you want to participate in. Go Fast – Be Safe,

Mike "Geronimo" Lanier, VP Adult Racing
Cell: (404) 275-0888 • Email: racing@blackskiinc.org

Whitewater Rafting & Ziplining Adventure

at Harpers Ferry Adventure Center in Parcellville, Virginia
Saturday, August 13, 2014

Just 1 Hour from the DC Metro Area at the northern tip of Loudoun County, VA, near Harpers Ferry, WV - Transportation Not Included - Carpooling Available

White Water Rafting

Experience the thrills and spills of West Virginia White Water Rafting on this 7 mile stretch of the Shenandoah and Potomac Rivers near Harpers Ferry, WV, where you will explore Class I-III (sometimes I-II+) rapids. This half day trip begins with a short flat water section on the Shenandoah River where you will receive a general orientation to rafting and learn basic paddle strokes, maneuvering techniques, and river safety skills from our expert guides. You can also watch for local wildlife while paddling this section; you might see blue herons, ospreys, and maybe even a bald eagle! Next... what's that sound? That's not banjo music you hear. It's the roar of Bull Falls! You'll hear it before you see it and before you know it, you'll be splashing through one of the best rapids on your journey!

All trips include: the raft, a guide in each raft, PFD (Personal Flotation Device), helmet, paddle, beverage during the trip, and shuttle to and from the river.



Zip Lining!

A brand new Zip Line Tour introduced in the Spring of 2012, boasts the best views in the area! This 1.5 - 2 hour tour is complete with 7 zips and a Sky Bridge! You'll fly through the tree tops along the Potomac River, near Harpers Ferry, WV.

Experience 8 elements: Stairway to Heaven, One and Done, Pucker Up, Blue Ridge Bridge, Dew Drop In, Geronimo, Last Stand, and Hunter's Landing. With heights up to 40 feet, zips up to 425 ft, and a 100 ft Sky Bridge, this is an experience you won't want to miss!

All trips include: the equipment (helmet, harness, and gloves), a guide, and shuttle to and from The Mountain. No previous zip line experience is necessary. Participants must weigh between 60 and 250 lbs.

Just \$165/Person For This Day Long Adventure! Includes Lunch, Taxes & Fees

Trip Directors Lydia Hunt • 240.393.1390 • Terry Anderson • 862.668.1443

Email adventure@blackskiinc.org • More information and online payments at: www.blackskiinc.org/adventure.html

Signup Deadline: August 10, 2013

Whitewater/Ziplining Adventure August 17, 2013 Amount Enclosed \$ _____

Your Legal Name First _____ Middle _____ Last _____

M/F _____ Birth Month/Day/Year ____/____/____ BSI Member No. _____

Address _____ City _____ State _____ Zip _____

Telephone _____ Home/Work _____ Cell _____ E-mail _____

Emergency Contact Name _____ Telephone (____) _____

No. of Persons	Price	Activity	
	X \$165 per person	Whitewater and Ziplining Adventure	Total \$

Name of Participants _____

☐ I/We Agree to the Black Ski's Terms and Conditions

Mail this form with your payment to: Black Ski, Inc., P.O. Box 90762, Washington, D.C. 20090-0762



Largest mountain in Summit Co.!

EPIC PASS HOLDERS WELCOME!!!

Join Black Ski for Early Season Warm Up 2013 December 7 - 14, 2013 @ KEYSTONE SKI RESORT KEYSTONE, COLORADO

Updated 7.1.13

- Round trip air and ground transportation from BWI to Denver Airport (Air Full Week Only)
- 4- or 7-night hotel or condo accommodations
- 3, 4, 5 and 6 day Lift Tickets - Valid for Keystone, Vail, Beaver Creek, Breckenridge and A-Basin
- **Package Includes:** Lodging, Air Seat (Full Week Only), Ground Transportation, Lift Ticket (5 day - Full Week, 3 day - Half Week), Welcome party, Club party, Après Ski Happy Hours, Picnic on the Hill, Races and Awards Ceremony
- Full and 1/2 Day Skiing and Snowboarding & Racing Lessons available at all skill levels (additional cost).
- FREE Never Ever Program - LIMITED AVAILABILITY

Slopeside Condos - Studio Rooms with 1 Queen Bed partial kitchen and full bath. Double Occupancy

LOCATION: 50-yard walk to Lifts - Mountain House Base Area.

COST Per Person: Full Week with Air \$1540 | Full Week no Air \$1,065 | Half Week no Air \$735 (Sat - Wed or Tue - Sat)

CONDOS	Riverun Condos	COST Per Person: Full Week With Air Full Week No Air Half Week No Air		
	Studio, 1, 2 or 3 Bedrooms with full kitchen, living room and full baths.	Studio(Dbl Occ)	\$1,680	\$1,205
	LOCATION: Short walk to Gondola and lifts.	1 Bedroom(Dbl Occ)	\$1,750	\$1,275
		2 Bedrooms(Quad Occ)	\$1,360	\$885
		3 Bedrooms(6 Person Occ)	\$1,400	\$925

Keystone Lodge & Spa 1 king bed or 2 queen beds Hotel Rooms Double Occupancy. **LOCATION:** Shuttle ride to Lifts

COST Per Person: Full Week with Air \$1,540/person | Full Week no Air \$1,065/person | Half Week no Air \$735/person

Inn at Keystone Hotel Rooms with 1 king bed or 2 queen beds. Double Occupancy

LOCATION: Walk to Lifts and the Mountain House Base Area.

COST Per Person: Full Week with Air \$1,500/person | Full Week no Air \$1,025/person | Half Week no Air \$710/person

Payment Schedule

\$250 Deposit	May 28, 2013	\$200	July 23, 2013	\$200	September 24, 2013
\$200	June 25, 2013	\$200	August 27, 2013	Balance Due	October 22, 2013

Cancellations requests must be made in writing. Any requests submitted after August 1, 2013 are subject to a \$200 cancellation fee.

Trip Director Vicki McGill • 202.526.6246 Assistant Trip Director Alisa Dotson • 301.641.5127 eswu@blackskiinc.org • blackskiinc.org/eswu.html

Please complete and submit with your trip payment form. **NOTE:** Anyone attending a trip that runs a weekend or longer must be a club member.

Early Season Warm Up 2013 at Keystone Ski Resort December 7 - 14, 2013 Amount Enclosed \$ _____

☐ Full Week OR ☐ Half Week Never Ever? Yes ☐ No ☐ Ski ☐ Boarding ☐ Lessons? Yes ☐ No ☐

Your Legal Name _____ M/F _____ Birth Month/Day/Year ____/____/____ (TSA Requirement)

Address _____ City _____ State _____ Zip _____

Telephone _____ Home _____ Cell BSI Member No. _____ E-mail _____

Please check all that apply: Air Seat from BWI? ☐ Yes ☐ No Ground Transfers? ☐ Yes ☐ No

Accommodations: RIVER RUN CONDOS: ☐ Studio ☐ 1 Bedroom Condo ☐ 2 Bedroom Condo ☐ 3 Bedroom Condo

HOTEL ROOMS: ☐ Inn at Keystone ☐ Keystone Resort Lodge STUDIOS: ☐ Slopeside Studios

Roommate _____ Condo Mates _____

Lift Tickets Days 3 ☐ 4 ☐ 5 ☐ 6 ☐ Do you mind opposite sex condo mates? ☐ Yes ☐ No Children? ☐ Yes ☐ No

Emergency Contact Name _____ Telephone (____) _____

☐ I Agree to the Black Ski's Terms and Conditions (available at http://blackskiinc.org/images/BSI_terms_Cond.pdf)

Mail this form with your payment to: Black Ski, Inc., P.O. Box 90762, Washington, D.C. 20090-0762



Sundance Film Festival 2014 - Park City, Utah

PRICES REDUCED!!!!
65% Sold Out!

January 18 - 25, 2014

Ski by Day • Enjoy the Film Festival Every Night!

Park City Mountain Resort - is Great for Beginners and Expert Skiers and Boarders with extended glade terrain, upgraded on-mountain restaurants, expanded beginner terrain, and a ski-and-snowboard park. Enjoy the deep powder bowls, long groomed runs, gentle beginner slopes, steep chutes, and three world-class terrain parks. We will be there during the Sundance Film Festival, the premier showcase of contemporary US and international independent film.

Trip Includes:

- Roundtrip Airfare from BWI to SLC - Subtract \$550 to secure your own airfare
- Roundtrip charter bus transfers between airport and lodging
- 7 night lodging accommodations at the Park City Peaks Hotel or Edelweiss Haus Condominiums
- 5 day lift ticket to Park City Mountain Resort (Canyons and Deer Valley Lift Tickets Available for Additional Cost)
- Sundance Film Festival Information will be Provided as Soon as Announced - Event Tickets Additional

Accommodations

Edelweiss Haus - Short Walk - Directly across from the Park City Mountain Resort lifts

Package Cost - \$1,685

This Quad Occupancy two bedroom and two full bath condominium features with a queen bed and twin/twin beds, gas fireplace, cable TV, wireless internet, phone, fully-equipped kitchen, refrigerator, microwave, coffee maker, dishwasher, laundry area, outdoor hot tub, outdoor heated pool, sauna rooms, and shopping nearby.

Park City Peaks Hotel - Shuttle to Park City Mountain Resort's Slopes

Package Cost - \$1,635

Spacious Double Occupancy Hotel Rooms featuring 2 Queen Beds or 1 King Bed, Welcome wine and cheese reception, Full hot breakfast daily, Daily "cookie man" room delivery, "Blues Cruise" mountain tour with Maxine and Wireless high-speed internet access. Many rooms at the hotel offer spectacular views of the Park City mountain ski resorts. Hotel Amenities: heated indoor/outdoor swimming pool, whirlpools, dry sauna and restaurants.

Payment Schedule

Updated 7.9.13

February 19, 2013 - Deposit	\$300	May	\$175	August	\$175
March	\$175	June	\$175	September	\$175
April	\$175	July	\$175	October	Final Balance Due

Trip Director Vicki McGill • 202.526.6246 • **Assistant Trip Director** Darlene Bing • 202.583.4504

Email sundance@blackskiinc.org • More information and make payments online at: www.blackskiinc.org/sundance.html

Cancellation requests must be made in writing. Any requests submitted after June 30, 2013 are subject to a \$250 cancellation fee. Please refer to Black Ski's Terms and Conditions for more information.

Sundance Film Festival/Park City UT **January 18 - 25, 2014** **Amount Enclosed \$** _____

Anyone attending a trip that runs a weekend or longer must be a club member. Note: Airline tickets will be issued in the name you use.

Your Legal Name First _____ Middle _____ Last _____

M/F _____ **Birth Month/Day/Year** ____/____/____ **BSI Member No.** _____

Address _____ **City** _____ **State** _____ **Zip** _____

Telephone _____ **Home/Work** _____ **Cell** _____ **E-mail** _____

Please check all that apply: **Air Seat from BWI?** ☐ Yes ☐ No **Ground Transfers?** ☐ Yes ☐ No

Accommodations: ☐ **The Peaks** - 2 Per Hotel Room - \$1,635 ☐ **Edelweiss** - 4 Per Condo - \$1,685

Room/Condo Mate(s) _____

Do you mind opposite sex condo mates? ☐ Yes ☐ No

Do you mind Children? ☐ Yes ☐ No

Emergency Contact Name _____ **Telephone ()** _____

☐ **I Agree to the Black Ski's Terms and Conditions**

Mail this form with your payment to: Black Ski, Inc., P.O. Box 90762, Washington, D.C. 20090-0762

Whistler|Blackcomb is HUGE with more skiing acreage than Vail & Jackson Hole combined!



Join Black Ski for Whistler 2014 February 8 - 15, 2014

Whistler Blackcomb, British Columbia - Canada

PACKAGE COSTS \$1,600 - \$1,735

Whistler and Blackcomb are two side-by-side mountains which combined offer over 200 marked runs, 8,171 acres of terrain, 16 alpine bowls and three glacier and the PEAK 2 PEAK Gondola. Consistently ranked as North America's top ski and snowboard resort, Whistler Blackcomb welcomed the world in 2010 as a host venue for the Olympic and Paralympic Winter Games.

MOUNTAIN STATS

WHISTLER MOUNTAIN

Elevation 7,160 ft, **Skiable Terrain** 4,757 acres, **Terrain** Beg 20%, Int 55%, Adv 25%, **Trails** 100+, **Parks** 2, **Lifts** 20

BLACKCOMB MOUNTAIN

Elevation 7,494 ft, **Skiable Terrain** 3,414 acres **Terrain** Beg 15%, Int 55%, Adv 30%, **Trails** 100+, **Parks** 3, **Lifts** 17

Trip Package Includes:

- Round trip air transportation from BWI to Vancouver (baggage fees not included)
- Ground transportation from Vancouver Airport to Whistler - **Passport required**
- 5 day Lift Ticket for Whistler and Blackcomb Mountains (fewer days available)
- Club Party, Après Happy Hours, 1 - Fresh Tracks and Mountain Top Breakfast
- 7 Nights Lodging - Accommodation Options:

Delta Whistler Village Suites - 5 minute walk to lifts

- **1 Bedroom Suite - \$1,600/person** Double Occ- incl. 1 Bedroom with Queen Bed, 1 Full Bathroom, Full Kitchen, Gas Fireplace, Living Room with Sofa Bed, Full Kitchen, Washer and Dryer and Balcony
- **2 Bedroom Suite - \$1,735/person** Quad Occ- 2 Bedrooms (Bedroom 1 - 1 Queen, Bedroom 2 - 2 Twin Beds), 2 Full Bathrooms, Living Room with Sofa Bed, Full Kitchen, Dining Area, Gas Fireplace, Washer and Dryer and Balcony

Payment Schedule:

\$350 Deposit - July 23, 2013

\$350 - September 24, 2013

Balance Due - November 26, 2013

\$350 - August 27, 2013

\$350 - October 22, 2013

Trip Director - Michelle McLean (240) 461-1515 • **Assistant Trip Director** - Darlene Bing (202) 262-6424

Email whistler@blackskiinc.org • **website** www.blackskiinc.org/whistler.html

Please complete and submit with your trip payment form. **NOTE: Anyone attending a trip that runs a weekend or longer must be a club member.**

Black Ski at Whistler

February 8 - 15, 2014

Amount Enclosed \$ _____

Your Legal Name _____ **M/F** _____ **Birth Month/Day/Year** ____/____/____ (TSA Requirement)

Address _____ **City** _____ **State** _____ **Zip** _____

Telephone _____ **Home** _____ **Cell** _____ **BSI Member No.** _____ **E-mail** _____

Please check all that apply: **Air Seat from BWI?** ☐ Yes ☐ No **Ground Transfers?** ☐ Yes ☐ No **Lift Ticket Days** ☐ 3 ☐ 4 ☐ 5

Accommodations: **Whistler Cascade Lodge** ☐ **Deluxe Studio** ☐ **1 Bedroom Suite** ☐ **2 Bedroom Suite**

Whistler Village Inn & Suites Hotel ☐ **Hotel Room**

Roommate/Suite Mates _____

Do you mind opposite gender roommates? ☐ Yes ☐ No **Children?** ☐ Yes ☐ No

Emergency Contact Name _____ **Telephone** (____) _____

☐ **I Agree to the Black Ski's Terms and Conditions**

Mail this form with your payment to: Black Ski, Inc., P.O. Box 90762, Washington, D.C. 20090-0762

BIG SKY RESORT – THE BIGGEST SKIING IN NORTH AMERICA!



Spring Fling 2014 @ Big Sky, Montana

Saturdays, March 15 – March 22, 2014

Package Price: \$1,782 - \$1,976

Trip Includes (Additional Costs: Airline Baggage Fees and Possible Airline Fuel Surcharges)

- Round trip air to Bozeman, MT Airport - from BWI or DCA-National via Delta
- Ground transportation to/from Bozeman Airport to the Big Sky - a one hour drive
- Five-day Lift Ticket includes 4-day ticket for Big Sky and 1-day lift ticket for Moonlight Basin
- Welcome Party & Private Black Ski Dinner

Lodging Option 1 - 7-nights lodging at the Luxurious Summit at Big Sky Hotel - **\$1976**

A Ski-in/Ski-out location in the heart of everything

- » An elegant Euro-Western style property with one King or two Queen beds
- » Includes a full daily breakfast, Private fitness center and outdoor hot tubs

Lodging Option 2 - Seven nights lodging at the Big Horn Condo – *limited availability* - short walk to puma lift (Breakfast NOT included) – **\$1782**

Lodging Option 3 – Seven nights at the Huntley Lodge - **\$1891** – *limited availability*

- » A standard hotel room with 2 Queen beds, includes a full daily breakfast

Optional Items:

- » 6-day lift ticket +\$54; 4-day lift ticket -\$20; (Sorry, no senior rates)
- » Upgrade Big Sky lift ticket to a two mountain lift ticket (Big Sky and Moonlight) +\$26 per day, on-site

Contact: Trip Director Tanya Jones H-301-680-8926 - Tanyalj20904@yahoo.com

Assistant Trip Director Mike Saizan H-301-297-7434 – C-301-785-2964 – bsi.atd@verizon.net

Sign Up Online: www.blackskiinc.org/springfling.html



Moonlight Basin

Mountain Stats

5,532 Skiable Acres

4,350 Vertical Drop

Over 220 Runs

Longest Run Six Mile

- 3632 skiable acres at Big Sky; 1900 skiable acres at Moonlight Basin Resort
- Expansive terrain for all levels; uncrowded, wide-open spaces
- Free guided mountain tours daily
- Guided Zip Line Tours, Snowshoeing and Snowmobiling available (extra cost)
- Basecamp to Yellowstone National Park

A full service resort with all the amenities you could ask for!

Payment Schedule

July 23, 2013	\$250 Deposit*	October 22, 2013	\$300	January 28, 2014	Balance Due
August 27, 2013	\$300	November 26, 2013	\$300	*Non-refundable after Sept 1, 2013	
September 24, 2013	\$300	December 17, 2013	\$300		

Please complete and submit with your trip payment form. **NOTE: Anyone attending a trip that runs a weekend or longer must be a club member.**

Black Ski Spring Fling at Big Sky

March 15- 22, 2014

Amount Enclosed \$ _____

Your Legal Name _____ **M/F** _____ **Birth Month/Day/Year** ____/____/____ (TSA Requirement)

Address _____ **City** _____ **State** _____ **Zip** _____

Telephone _____ **Home** _____ **Cell** _____ **BSI Member No.** _____ **E-mail** _____

Please check all that apply: **Air Seat from BWI?** ☐ Yes ☐ No **Air Seat from DCA?** ☐ Yes ☐ No ☐ No Air Seat (-\$658)

Ground Transfers? ☐ Yes ☐ No **Lift Ticket Days** ☐ 4 (-\$20) ☐ 5 ☐ 6 (+\$54) ☐ No Lift Ticket (-\$276) **Trip Insurance?** ☐ Yes ☐ No

Accommodations: The Summit Hotel ☐ Deluxe Studio ☐ 1 Bedroom Suite ☐ 2 Bedroom Suite

Double Room - Double Occupancy ☐ 2 Queen Beds or ☐ 1 King Bed (\$1976/person – standard package)

Private Room - Double Occupancy ☐ 2 Queen Beds or ☐ 1 King Bed (Single Occupancy add \$804)

Big Horn Condo - Quad Occupancy ☐ 2 bedroom – (\$1782/person) for four - Must consult with Trip Direction for this arrangement

Huntley Hotel ☐ Standard Room - 2 Queen Beds – (\$189/person) - Must consult with Trip Director for this arrangement

Roommate/Condo Mates _____

Do you mind opposite gender roommates? ☐ Yes ☐ No **Children?** ☐ Yes ☐ No

Emergency Contact Name _____ **Telephone** (____) _____

☐ **I Agree to the Black Ski's Terms and Conditions**

Mail this form with your payment to: Black Ski, Inc., P.O. Box 90762, Washington, D.C. 20090-0762

ADVANCED PLANNING MEETINGS

**1ST MONDAY OF EACH MONTH @ 7 PM
TURNER MEMORIAL AME CHURCH**

7201 16TH PLACE, HYATTSVILLE, MD

***Next Meeting
August 5***

**Contact Vicki McGill
for more information**

202.526.6246

advanceplanning@blackskiinc.org

Trip Directors needed.

Training Available

Now is a great time to GET INVOLVED!

Get It While It's Hot!

***Get Hot Wax Delivered to you via
email before it hits the streets!***

By getting **HOT WAX** delivered to your email box

You get the latest news even earlier

You get the full effect of the color layout,

and best of all

You'll be able to save the full color

PDF version for future reference.

To get ***e-HOT WAX***

Email newsletter@blackskiinc.org

Include your name, email address and membership number

DO IT TODAY!

Note: You'll need Adobe Acrobat Reader to open the document.

You can download the software-free of charge-
by visiting www.adobe.com.

ADVERTISE YOUR SERVICES IN HOT WAX

HOT WAX is distributed monthly to 700 Black Ski members located throughout the DC Metropolitan Area and beyond. By advertising your products and services, you can effectively reach a select and dynamic group of civic-minded professionals with a variety of sporting and social interests.

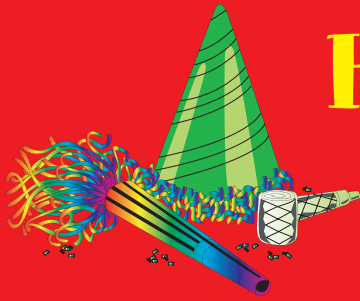
ADVERTISING RATES

Full Page	Half Page	1/4 Page	1/8 Page
8 1/2 X 11	8 1/2 X 5 1/2	4 1/4 X 5 1/2	2 1/4 X 4 1/8
\$50.00 per issue	\$35.00 per issue	\$20.00 per issue	\$15.00 per issue
\$270.00 six issues	\$190.00 six issues	\$110.00 six issues	\$80.00 six issues

***Deadline for Ad Submission is the 15th of each month for
inclusion in the following month's Hot Wax***

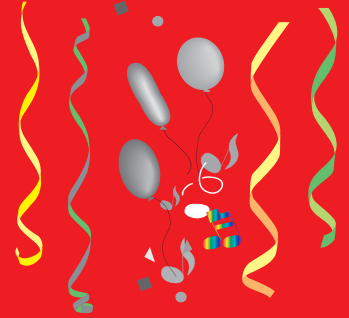
For details contact:

email communications@blackskiinc.org



Happy Birthday

July Birthdays!



Alethia Adamson
Theodosia Allen
Terry Anderson
Wade Berry
Deborah Berry
Patrick Berry
Wayne Blagmon
Gigi Branch
James Brodie
Juanita Burgess-Ginyard
L Donny Claytor
Phillis Cooke
Kathleen Crockett
Donald Davidson
Kayla Duboise
Sierra Edmonds
Leroy Ellison
Ferguson Evans

Austin Ficklin
Johnny Fountano
Renee Fudge
Charles Gibbs
Richard Green
Vanessa Haigler
Wilburn Hardison
Ramon Harris
Ronald Harrison
Neal Henderson
Earl Jackson
Deborah Jones
Carol Jones
Emmanual Key
Kayla Key
Sanitta Lanier
Boris Lloyd
Mildred McGuthry

Anita Mimbimi
Cassandra Newsome
Joseph Cliff Oliver
Gregory Parker
Moses Pettigrew
Pamela Pinkett
Betty Shamwell
Aaron Talley
James Teasley
Genevieve Thomas
Lionel Thomas
Dock Turner
Elliott Wallace
Eric Walton
Bryce Welch
Arthur Whitaker
Amy Wilkinson
Courtney Witherspoon

Black Ski Inc., Trip Payment Form



Anyone attending a trip that runs a weekend or longer must be a club member.
Please use one form for each trip you are paying for as each sheet will be forwarded to the trip director. We cannot duplicate the information you provide as trip directors do not see your check. Each payment should be accompanied by a trip payment form.

Trip Name _____ **Trip Date** _____ **Amount Enclosed \$** _____

Indicate Ski Package _____ **Lessons?** Yes ☐ No ☐ **Rentals?** Yes ☐ No ☐

Your Legal Name _____ **M/F** _____ **Birth Month/Day/Year** ____/____/____ (TSA Requirement))

Note: **Airline tickets will be issued in the name you use. Please be consistent** Airfare Charge option? ☐ Yes ☐ No

Address _____ **City** _____ **State** _____ **Zip** _____

Telephone _____ **Home** _____ **Work BSI Member No.** _____ **E-mail** _____

Please check all that apply: Air Option? ☐ Yes ☐ No Departing Airport ☐ BWI ☐ Dulles ☐ National

Ground Transfers? ☐ Yes ☐ No **Accommodations** ☐ Hotel Single/Double ☐ 2 Bedroom ☐ 3 Bedroom Condo

Roommate _____ **Condo Mates** _____

Lift Tickets 3 days ☐ 4 ☐ 5 ☐ 6 ☐ **Do you mind opposite sex condo mates?** ☐ Yes ☐ No

Children? ☐ Yes ☐ No **Is your child:** ☐ Under 5yrs ☐ 6 - 15 yrs ☐ 16 - 18 yrs

Emergency Contact Name _____ **Telephone ()** _____

Mail this form with your payment to: Black Ski, Inc., P.O. Box 90762, Washington, D.C. 20090-0762

BLACK SKI, INC. TERMS & CONDITIONS STATEMENT



Effective 9/1/00 Anyone going on a weekend or longer trip must be a club member.

An initial deposit per person is required to confirm your reservation. A non-refundable deposit fee of up to \$250 will be assessed if cancellation is received after date specified on trip flyer.

PAYMENTS

The payment schedule outlined on trip flyer must be adhered to unless arrangements are made with the Trip Directors. Failure to receive payment by date specified may cause loss of reservation (see cancellation for non-payment below). Monies received within thirty (30) days of the trip date will only be accepted in the form of a money order, certified check or cashier's check. No cash or personal check transactions will be accepted.

CANCELLATION

(a) Request for cancellation: A request to cancel from a trip must be in writing and directed to the Trip Director. The participant by voluntarily requesting to be canceled from the trip will be assessed the non-refundable deposit fee (as specified on trip flyer) plus any payments that have been made to vendors on his/her behalf. (b) Cancellation for non-payment: The participant is required to adhere to the trip's published payment schedule. If adherence is to the contrary, you will be notified in writing after you have missed two consecutive scheduled payments. The participant will be allowed fifteen (15) days to bring his/her scheduled payment plan up-to-date. If payment is not received after notification, all monies may be returned to the participant minus the nonrefundable deposit fee plus any payments that have been made to the vendors on his/her behalf.

REFUNDS AND TRANSFERS

Black Ski Inc. will make all attempts to refund participants whenever possible. Refunds will be made only after suitable replacements are found. Participant transferring funds from one trip to another must do so in writing and have authorization from both trip directors.

TRIP INSURANCE

The purchase of trip cancellation/interruption insurance is recommended and is usually available for a nominal fee.

ROOM ASSIGNMENT

Black Ski will attempt to honor all requests but reserves the right to make changes.

SKIER'S RESPONSIBILITY CODE

1. Always stay in control and be able to stop or avoid other people or objects.
2. People ahead of you have the right of way. It is your responsibility to avoid them.
3. You must not stop where you obstruct a trail or are not visible from above.
4. Whenever starting downhill or merging into a trail, look up hill and yield to others.
5. Always use devices to help prevent runaway equipment.
6. Observe all posted signs and warnings. Keep off closed trails and out of closed areas.
7. Prior to using any lift, you must have the knowledge & ability to load, ride and unload safely.

Black Ski, Inc. is not liable for irregularities, loss, injury or damages to persons and/or property during the trip. The participant accepts that there are risks inherent in skiing and adventure activities and hereby releases Black Ski, Inc. from any and all liabilities.

I accept, acknowledge and understand the Terms & Conditions Statement stated above.

Signature _____ Date _____

MEMBERSHIP APPLICATION/RENEWAL/INFORMATION UPDATE FORM



BLACK SKI, MORE THAN JUST A SKI CLUB

Please Print

First _____ Middle Initial _____ Last _____

Address _____

City _____ State _____ Zip Code _____ E-Mail Address _____

Telephone Number _____ Home _____ Work _____

Date of Birth _____ Member Number _____

Spouse First _____ Middle Initial _____ Last _____

Date of Birth _____ Member Number _____

Child Name _____ Date of Birth _____

Child Name _____ Date of Birth _____

New Members		Annual Renewal Rates		Lifetime Membership
<input type="checkbox"/> Individual	\$55	<input type="checkbox"/> Individual	\$30	<input type="checkbox"/> \$500 Flat Rate
<input type="checkbox"/> Family	\$90	<input type="checkbox"/> Family*	\$45	
<input type="checkbox"/> Youth	\$15	<input type="checkbox"/> Youth	\$10	

** Family Includes parent(s) & children 7 - 18, No charge for children under 7 yrs. if a parent is a member*

☐ Conversion from Individual to Family \$55

Renewal after more than 18 months lapse - Individual \$40 Family \$55

Consider making a generous donation to our Youth Program \$ _____

By joining Black Ski, Inc., as a member, I hereby release Black Ski, Inc., its officers, directors, employees, leaders and volunteers from any liability, damages or claims arising from injury or property damage sustained by me related to any Black Ski, Inc. activity or event. Total Fee Enclosed \$ _____

I give permission for my name to be submitted to NBS sponsor list. Yes ☐ No ☐

I would like to receive the *Hot Wax* Newsletter and other Black Ski notices via ☐ Email ☐ US Mail

Signature (Not Valid Unless Signed) _____ Date _____

Sponsor's Name _____ Date _____

Sponsor gets \$5.00 certificate for use on Black Ski activities for each new Lifetime, Individual or Family membership.

Indicate the Committee on which you would like to participate by checking the appropriate box(es)

☐ Advance Planning ☐ Youth ☐ Communications ☐ Fund Raising ☐ Business/Computer Support
☐ Hospitality ☐ Budget & Finance ☐ Membership ☐ Other (Specify) _____

Be sure you've completed the form properly and have included the total amount due.

Send check or money order to:

Membership Application/Renewal, Black Ski, Inc., P.O. Box 90762, Washington, D. C. 20090-0762



Black Ski, Inc.

P.O. Box 90762

Washington, D.C. 20090-0762

Address Correction/Forwarding Service Requested

STD
US POSTAGE PAID
WASHINGTON, DC
PERMIT NO. 884

HOT WAX - The Official Publication of Black Ski, Inc

www.blackskiinc.org • www.blackskiinc.net • www.blackskiinc.com • 301.231.3900

Yahoo Group: <http://sports.groups.yahoo.com/group/blackskiinc/>

Twitter: @blackskiinc **Facebook:** Black Ski Inc.

Black Ski, Inc. Executive Committee

President	Vicki McGill	202.526.6246	president@blackskiinc.org
Secretary	Alisa Dotson	301.438.0726	secretary@blackskiinc.org
Advanced Planning	<i>Vacant</i>		advanceplanning@blackskiinc.org
Administrative Support	Darlene Bing	202.583.4504	adminsupport@blackskiinc.org
Finance	Valerie Payton - Acting	301.221.0212	finance@blackskiinc.org
Fund Raising	Valerie Payton	301.221.0212	fundraising@blackskiinc.org
Hospitality	Vera Johnson	301.902.9403	hospitality@blackskiinc.org
Membership	<i>Vacant</i>		membership@blackskiinc.org
Racing	Michael Lanier	404.275.0888	racing@blackskiinc.org
Communications	<i>Vacant</i>		communications@blackskiinc.org
Youth	Beverly Johnson Broady	301.249.5955	youth@blackskiinc.org

Board of Directors

Russell Bacon
Betty "BJ" Jones
Lenny Milner*

Larry Coleman
Kathy Lambert, Secretary
Ken Moris, Chairman
Alease "Christy" Wright

Ken Ford
Vicki McGill
Kendall White

Furman Marshall*

Mickey Diggs* (Deceased)

Donny Claytor*

Ray Mott* (Deceased)

Jim Thorne*

* denotes Founding Members
- ***Italics*** denotes Inactive Members

Communications Team

Darlene Bing, Communications Coordinator
Vicki McGill, Layout & Design